



OVERVIEW

The Bureau of Safety and Environmental Enforcement's renewable energy program, overseen by the Office of the Director, works with bureau experts to establish, deploy and maintain an effective offshore renewable energy program.

BSEE's Renewable Energy Team works with BSEE management to develop and implement rigorous safety and environmental regulations and oversight of this nascent industry.

OFFSHORE WIND ENERGY DEVELOPMENT

The Department of the Interior is committed to advancing the nation's first-ever offshore wind energy goal—to deploy 30 gigawatts of offshore wind by 2030, which will create an estimated 80,000 family supporting jobs.

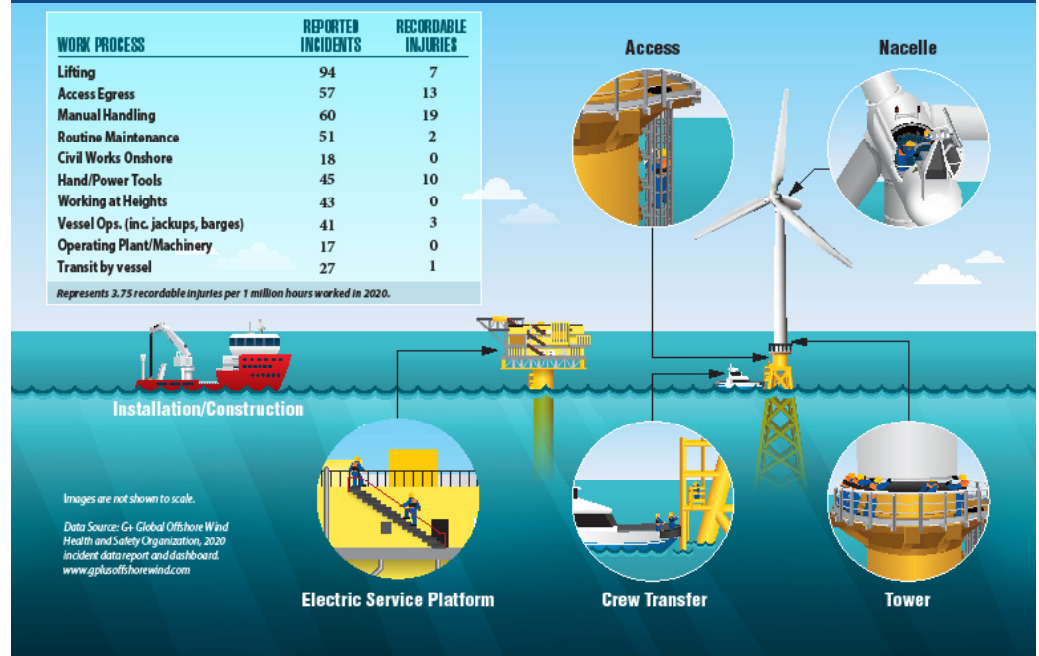
The nation's first two commercial-scale offshore wind projects in federal waters were approved in 2021:

- Vineyard Wind, an 800-megawatt project approved May 11, 2021.
- South Fork, a 130-megawatt project approved Nov. 24, 2021.

An additional 16 wind energy projects are currently under review, and if approved, these would secure more than 22 GW of clean energy.

OFFSHORE WIND SAFETY INCIDENTS

Looking to Europe for Lessons Learned



THE BSEE MISSION - WORKPLACE SAFETY AND ENVIRONMENTAL PROTECTION

In preparation for large-scale wind energy on the Outer Continental Shelf, BSEE anticipates the transfer of certain safety and environmental compliance regulations from the Bureau of Ocean Energy Management to BSEE. A Memorandum of Agreement signed Dec. 22, 2020 clarifies the bureaus' roles and responsibilities and promotes offshore renewable energy production. The MOA represents the first step toward initiating the formal transfer of relevant safety and environmental compliance responsibilities to BSEE.

BSEE is developing a compliance assurance strategy for renewable energy that recognizes this industry's unique operating environment, focuses on timely and rigorous reviews of industry plans to ensure they promote safe operations, includes robust safety management systems, and will comply with applicable regulations, lease stipulations, and other terms and conditions of BOEM's plan approval.

BSEE provides for analysis of Site Assessment Plans, Construction and Operations Plans, General Activities Plans, Facility Design Reports, Fabrication and Installation Reports, Safety Management Systems, Oil Spill Response Plans, Certified Verification Agent nominations, CVA statements of work, decommissioning cost estimates, decommissioning applications and site clearance reports, and other industry submittals.



BSEE PARTNERSHIPS

BSEE will draw from its experience regulating the offshore oil and gas sector and will also look to international best practices, learned over two decades of offshore wind energy production, to inform safety programs for OCS renewable energy operations.

BSEE also engages other federal agencies including, but not limited to, the U.S. Coast Guard, the Occupational Safety and Health Administration, and the U.S. Army Corps of Engineers, as well as academia, renewable energy industries, and state and local stakeholders to inform the development of BSEE's renewable energy program functions.



BSEE promotes safe and environmentally responsible offshore wind energy facility designs, fabrication, installation, operation, and decommissioning, and enforces compliance with all applicable safety, environmental, and conservation laws and regulations.

The Bureau of Safety and Environmental Enforcement, established in 2011, is a U.S. Department of the Interior agency. BSEE promotes worker safety, environmental protection and conservation of resources through regulatory oversight and enforcement of the offshore energy industry on the U.S. Outer Continental Shelf.