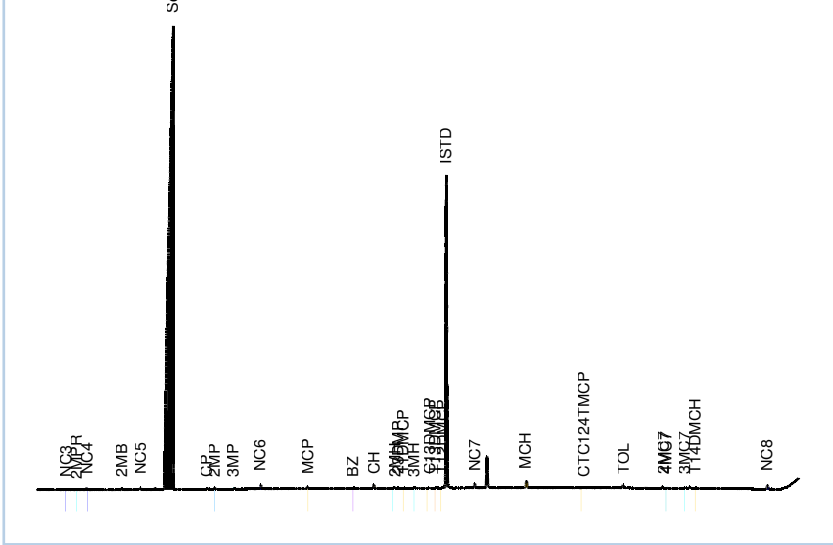




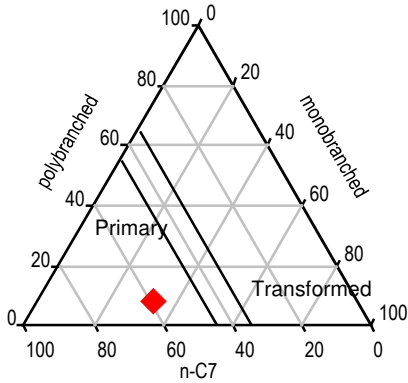
Country	United States	Sample id	FPC_1158612
Basin	UNKNOWN	Project	ZZPT/027520/010101
Lease	OCS-Y-2321	Request	FPC6196
Block	POSEY 6912	Sample type	Rock
Field	BURGER	Depth	5897.3ft
Well name	OCS-Y-2321 BURGER J 001	Age	Early Cretaceous
Latitude	71.1733498	Formation	Kup C / A
Longitude	-163.4718517	Reservoir	Kup C

GC gasoline fraction

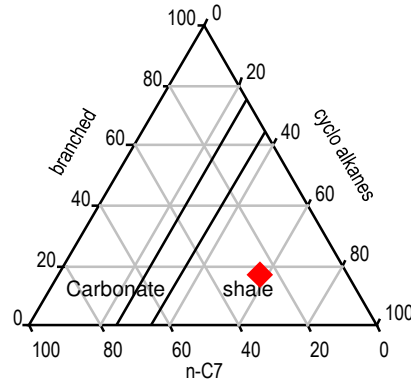


Peak areas	
1: Methane	
2: Ethane	
3: Propane	1
4: 2-methylpropane (i-C4)	1
5: butane	3
6: 2-methylbutane (i-C5)	3
7: n-pentane	4
8: 2,2-dimethylbutane	
9: cyclopentane	2
10: 2,3-dimethylbutane	
11: 2-methylpentane	3
12: 3-methylpentane	2
13: n-hexane	6
14: methylcyclopentane	4
15: 2,2-dimethylpentane	
16: benzene	2
17: 2,4-dimethylpentane	
18: 2,2,3-trimethylbutane	
19: Cyclohexane	7
20: 3,3-dimethylpentane	
21: 1,1-dimethylcyclopentane	1
22: 2-methylhexane	2
23: 2,3-dimethylpentane	1
24: 1c3-dimethylcyclopentane	1
25: 3-methylhexane	3
26: 1t3-dimethylcyclopentane	1
27: 1t2-dimethylcyclopentane	2
28: 3-ethylpentane	
29: 2,2,4-trimethylpentane (Standard)	626
30: n-heptane	9
31: 1c2-dimethylcyclopentane	
32: methylcyclohexane	16
33: 1,1,3-trimethylcyclopentane	
34: 2,2-dimethylhexane	
35: ethylcyclopentane	
36: 2,5-dimethylhexane	
37: 2,4-dimethylhexane	
38: 2,2,3-trimethylpentane	
39: 1t2c4-trimethylcyclopentane	1
40: toluene	8

Alkane Distribution



Alkane/Cycloalkanes



C7 Alkanes (%)	
normal C7	59.14
monobranched	32.57
polybranched	8.29
Alkanes/cycloalkanes (%)	
normal C7	25.38
cycloalkanes	57.08
branched alkanes	17.54
Alkanes/cycloalkanes (%)	
normal C7	34.74
cycloalkanes	46.21
aromatics	19.05

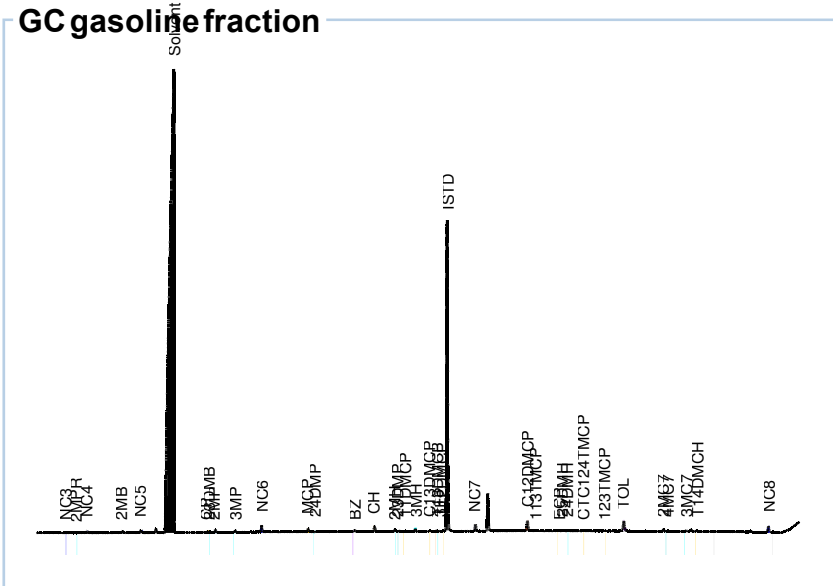
Parameters	
C7 fraction %	
C7 temperature (RWK)	137.08
C7 temperature (HOU)	
C7 VR/E	0.90
Prime sum	1.13
PCI	
Ring preference	
Three membered rings %	17.87
Five membered rings %	13.40
Six membered rings %	68.73

Comments: SAMPLE ANALYZED NEAT - LOW SIGNAL RESPONSE



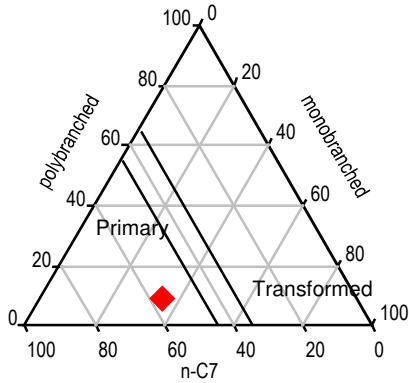
Country	United States	Sample id	FPC_1158613
Basin	UNKNOWN	Project	ZZPT/027520/010101
Lease	OCS-Y-2321	Request	FPC6196
Block	POSEY 6912	Sample type	Rock
Field	BURGER	Depth	5908.9ft
Well name	OCS-Y-2321 BURGER J 001	Age	Early Cretaceous
Latitude	71.1733498	Formation	Kup C / A
Longitude	-163.4718517	Reservoir	Kup C

GC gasoline fraction

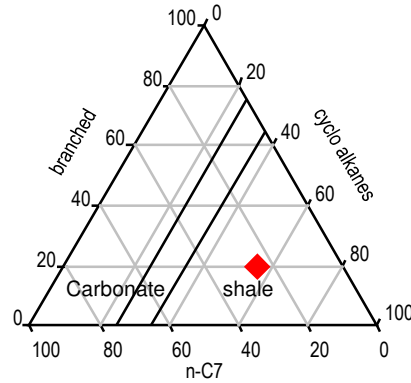


Peak areas	
1: Methane	
2: Ethane	
3: Propane	0
4: 2-methylpropane (i-C4)	1
5: butane	2
6: 2-methylbutane (i-C5)	4
7: n-pentane	6
8: 2,2-dimethylbutane	
9: cyclopentane	2
10: 2,3-dimethylbutane	1
11: 2-methylpentane	4
12: 3-methylpentane	3
13: n-hexane	9
14: methylcyclopentane	5
15: 2,2-dimethylpentane	
16: benzene	3
17: 2,4-dimethylpentane	1
18: 2,2,3-trimethylbutane	
19: Cyclohexane	10
20: 3,3-dimethylpentane	
21: 1,1-dimethylcyclopentane	1
22: 2-methylhexane	4
23: 2,3-dimethylpentane	2
24: 1c3-dimethylcyclopentane	2
25: 3-methylhexane	4
26: 1t3-dimethylcyclopentane	1
27: 1t2-dimethylcyclopentane	3
28: 3-ethylpentane	0
29: 2,2,4-trimethylpentane (Standard)	621
30: n-heptane	14
31: 1c2-dimethylcyclopentane	23
32: methylcyclohexane	
33: 1,1,3-trimethylcyclopentane	1
34: 2,2-dimethylhexane	
35: ethylcyclopentane	1
36: 2,5-dimethylhexane	1
37: 2,4-dimethylhexane	1
38: 2,2,3-trimethylpentane	
39: 1t2c4-trimethylcyclopentane	1
40: toluene	25

Alkane Distribution



Alkane/Cycloalkanes



C7 Alkanes (%)	
normal C7	56.01
monobranched	34.47
polybranched	9.52
Alkanes/cycloalkanes (%)	
normal C7	25.19
cycloalkanes	55.02
branched alkanes	19.78
Alkanes/cycloalkanes (%)	
normal C7	30.88
cycloalkanes	37.78
aromatics	31.34

Parameters	
C7 fraction %	
C7 temperature (RWK)	132.04
C7 temperature (HOU)	120.41
C7 VR/E	0.85
Prime sum	0.75
PCI	0.01
Ring preference	
Three membered rings %	16.43
Five membered rings %	45.68
Six membered rings %	37.89

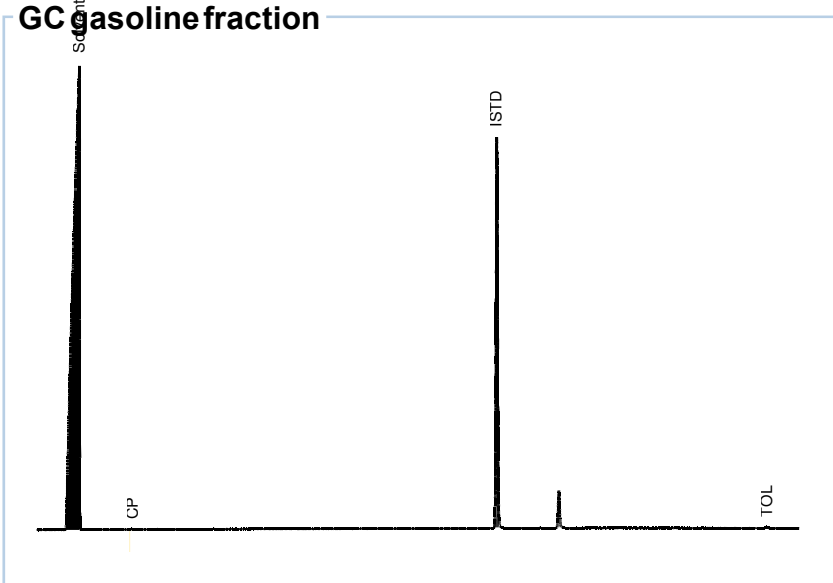
Comments: SAMPLE ANALYZED NEAT - LOW SIGNAL RESPONSE





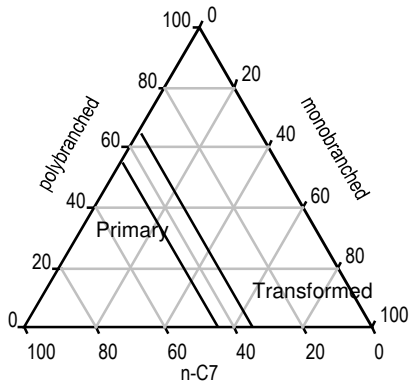
Country	United States	Sample id	FPC_1158617
Basin	UNKNOWN	Project	ZZPT/027520/010101
Lease	OCS-Y-2321	Request	FPC6196
Block	POSEY 6912	Sample type	Rock
Field	BURGER	Depth	5953.0ft
Well name	OCS-Y-2321 BURGER J 001	Age	Early Cretaceous
Latitude	71.1733498	Formation	Kup C / A
Longitude	-163.4718517	Reservoir	Kup A

GC Gasoline fraction

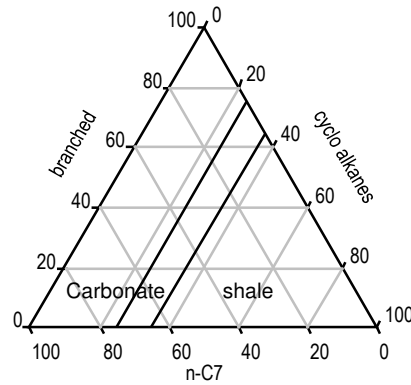


Peak areas	
1: Methane	
2: Ethane	
3: Propane	
4: 2-methylpropane (i-C4)	
5: butane	
6: 2-methylbutane (i-C5)	
7: n-pentane	
8: 2,2-dimethylbutane	
9: cyclopentane	1
10: 2,3-dimethylbutane	
11: 2-methylpentane	
12: 3-methylpentane	
13: n-hexane	
14: methylcyclopentane	
15: 2,2-dimethylpentane	
16: benzene	
17: 2,4-dimethylpentane	
18: 2,2,3-trimethylbutane	
19: Cyclohexane	
20: 3,3-dimethylpentane	
21: 1,1-dimethylcyclopentane	
22: 2-methylhexane	
23: 2,3-dimethylpentane	
24: 1c3-dimethylcyclopentane	
25: 3-methylhexane	
26: 1t3-dimethylcyclopentane	
27: 1t2-dimethylcyclopentane	
28: 3-ethylpentane	
29: 2,2,4-trimethylpentane (Standard)	755
30: n-heptane	
31: 1c2-dimethylcyclopentane	
32: methylcyclohexane	
33: 1,1,3-trimethylcyclopentane	
34: 2,2-dimethylhexane	
35: ethylcyclopentane	
36: 2,5-dimethylhexane	
37: 2,4-dimethylhexane	
38: 2,2,3-trimethylpentane	
39: 1t2c4-trimethylcyclopentane	
40: toluene	4

Alkane Distribution



Alkane/Cycloalkanes



C7 Alkanes (%)	
normal C7	
monobranched	
polybranched	
Alkanes/cycloalkanes (%)	
normal C7	
cycloalkanes	
branched alkanes	
Alkanes/cycloalkanes (%)	
normal C7	0.00
cycloalkanes	0.00
aromatics	100.00

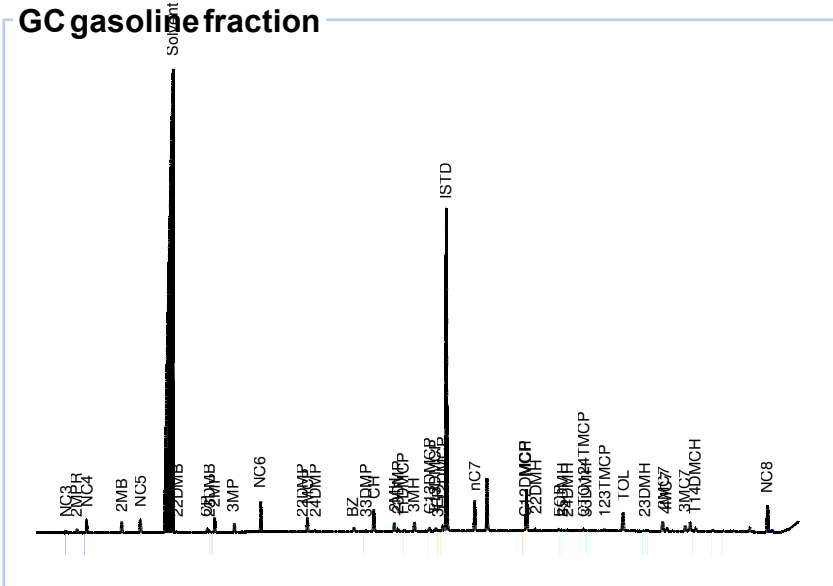
Parameters	
C7 fraction %	
C7 temperature (RWK)	
C7 temperature (HOU)	
C7 VR/E	
Prime sum	
PCI	
Ring preference	
Three membered rings %	0.00
Five membered rings %	0.00
Six membered rings %	100.00

Comments: SAMPLE ANALYZED NEAT - LOW SIGNAL RESPONSE



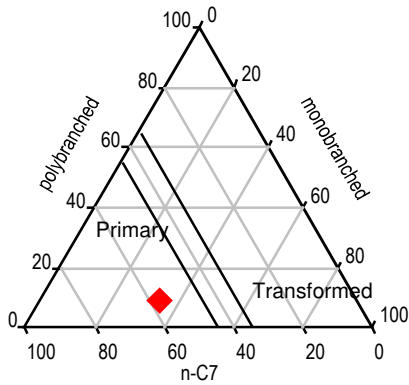
Country	United States	Sample id	FPC_1158623
Basin	UNKNOWN	Project	ZZPT/027520/010101
Lease	OCS-Y-2321	Request	FPC6196
Block	POSEY 6912	Sample type	Rock
Field	BURGER	Depth	5930.2ft
Well name	OCS-Y-2321 BURGER J 001	Age	Early Cretaceous
Latitude	71.1733498	Formation	Kup C / A
Longitude	-163.4718517	Reservoir	Kup A

GC gasoline fraction

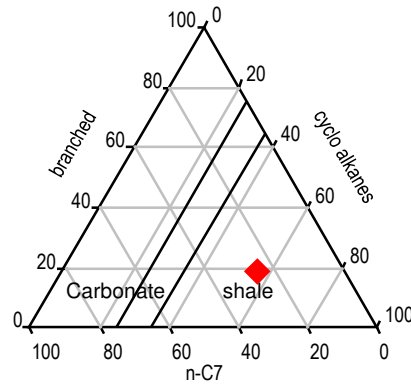


Peak areas	
1: Methane	
2: Ethane	
3: Propane	3
4: 2-methylpropane (i-C4)	4
5: butane	16
6: 2-methylbutane (i-C5)	19
7: n-pentane	27
8: 2,2-dimethylbutane	2
9: cyclopentane	6
10: 2,3-dimethylbutane	3
11: 2-methylpentane	19
12: 3-methylpentane	12
13: n-hexane	40
14: methylcyclopentane	23
15: 2,2-dimethylpentane	1
16: benzene	8
17: 2,4-dimethylpentane	2
18: 2,2,3-trimethylbutane	
19: Cyclohexane	39
20: 3,3-dimethylpentane	1
21: 1,1-dimethylcyclopentane	4
22: 2-methylhexane	15
23: 2,3-dimethylpentane	5
24: 1c3-dimethylcyclopentane	7
25: 3-methylhexane	17
26: 1t3-dimethylcyclopentane	6
27: 1t2-dimethylcyclopentane	11
28: 3-ethylpentane	1
29: 2,2,4-trimethylpentane (Standard)	632
30: n-heptane	57
31: 1c2-dimethylcyclopentane	2
32: methylcyclohexane	88
33: 1,1,3-trimethylcyclopentane	
34: 2,2-dimethylhexane	5
35: ethylcyclopentane	4
36: 2,5-dimethylhexane	2
37: 2,4-dimethylhexane	3
38: 2,2,3-trimethylpentane	
39: 1t2c4-trimethylcyclopentane	5
40: toluene	43

Alkane Distribution



Alkane/Cycloalkanes



C7 Alkanes (%)	
normal C7	57.33
monobranched	33.57
polybranched	9.09
Alkanes/cycloalkanes (%)	
normal C7	25.87
cycloalkanes	54.89
branched alkanes	19.25
Alkanes/cycloalkanes (%)	
normal C7	37.72
cycloalkanes	45.89
aromatics	16.39

Parameters	
C7 fraction %	
C7 temperature (RWK)	133.85
C7 temperature (HOU)	125.51
C7 VR/E	0.87
Prime sum	0.99
PCI	0.15
Ring preference	
Three membered rings %	20.54
Five membered rings %	16.29
Six membered rings %	63.18

Comments: SAMPLE ANALYZED NEAT - LOW SIGNAL RESPONSE

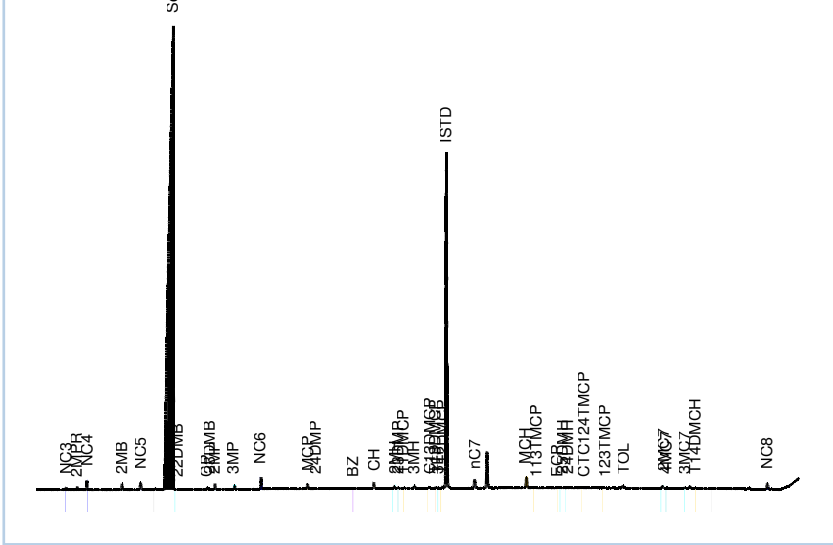






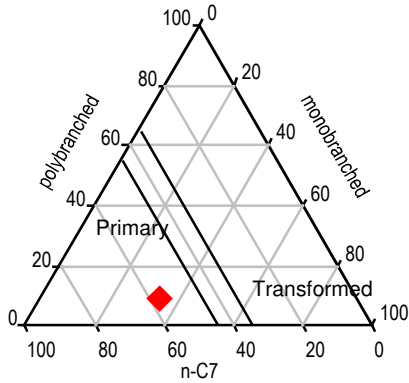
Country	United States	Sample id	FPC_1158646
Basin	UNKNOWN	Project	ZZPT/027520/010101
Lease	OCS-Y-2321	Request	FPC6196
Block	POSEY 6912	Sample type	Rock
Field	BURGER	Depth	6472.5ft
Well name	OCS-Y-2321 BURGER J 001	Age	Early Cretaceous
Latitude	71.1733498	Formation	Kup D
Longitude	-163.4718517	Reservoir	Kup D

GC gasoline fraction

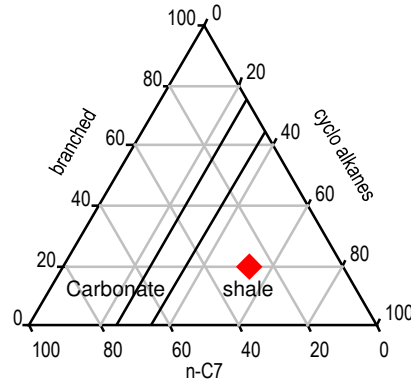


Peak areas	
1: Methane	
2: Ethane	
3: Propane	3
4: 2-methylpropane (i-C4)	3
5: butane	11
6: 2-methylbutane (i-C5)	10
7: n-pentane	15
8: 2,2-dimethylbutane	1
9: cyclopentane	3
10: 2,3-dimethylbutane	1
11: 2-methylpentane	7
12: 3-methylpentane	5
13: n-hexane	16
14: methylcyclopentane	8
15: 2,2-dimethylpentane	
16: benzene	2
17: 2,4-dimethylpentane	1
18: 2,2,3-trimethylbutane	
19: Cyclohexane	11
20: 3,3-dimethylpentane	
21: 1,1-dimethylcyclopentane	1
22: 2-methylhexane	4
23: 2,3-dimethylpentane	2
24: 1c3-dimethylcyclopentane	3
25: 3-methylhexane	5
26: 1t3-dimethylcyclopentane	2
27: 1t2-dimethylcyclopentane	4
28: 3-ethylpentane	1
29: 2,2,4-trimethylpentane (Standard)	659
30: n-heptane	17
31: 1c2-dimethylcyclopentane	
32: methylcyclohexane	22
33: 1,1,3-trimethylcyclopentane	2
34: 2,2-dimethylhexane	
35: ethylcyclopentane	2
36: 2,5-dimethylhexane	1
37: 2,4-dimethylhexane	1
38: 2,2,3-trimethylpentane	
39: 1t2c4-trimethylcyclopentane	2
40: toluene	6

Alkane Distribution



Alkane/Cycloalkanes



C7 Alkanes (%)	
normal C7	57.33
monobranched	33.84
polybranched	8.83
Alkanes/cycloalkanes (%)	
normal C7	27.11
cycloalkanes	52.71
branched alkanes	20.18
Alkanes/cycloalkanes (%)	
normal C7	42.96
cycloalkanes	47.88
aromatics	9.16

Parameters	
C7 fraction %	
C7 temperature (RWK)	133.60
C7 temperature (HOU)	123.02
C7 VR/E	0.87
Prime sum	0.98
PCI	0.13
Ring preference	
Three membered rings %	24.32
Five membered rings %	21.83
Six membered rings %	53.85

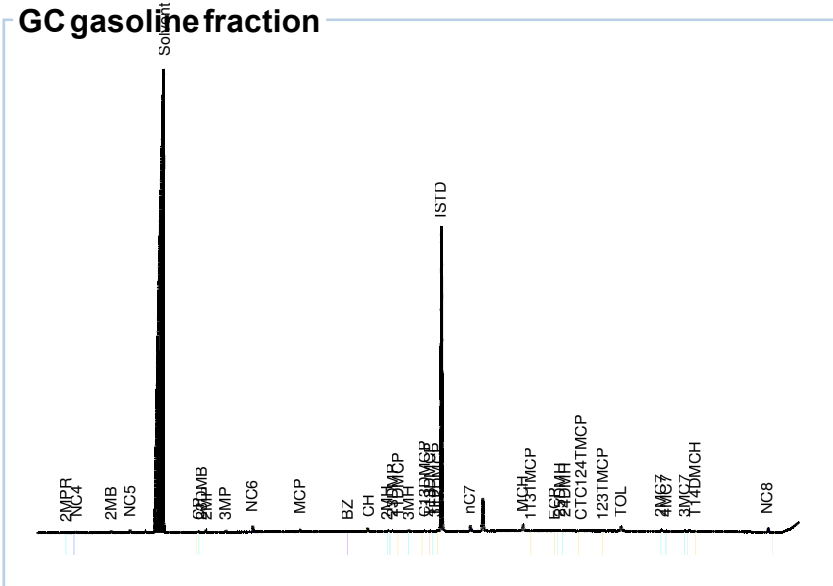
Comments: SAMPLE ANALYZED NEAT - LOW SIGNAL RESPONSE





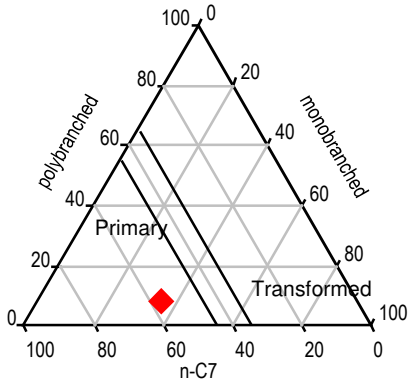
Country	United States	Sample id	FPC_1158647
Basin	UNKNOWN	Project	ZZPT/027520/010101
Lease	OCS-Y-2321	Request	FPC6196
Block	POSEY 6912	Sample type	Rock
Field	BURGER	Depth	6481.5ft
Well name	OCS-Y-2321 BURGER J 001	Age	Early Cretaceous
Latitude	71.1733498	Formation	Kup D
Longitude	-163.4718517	Reservoir	Kup D

GC gasoline fraction

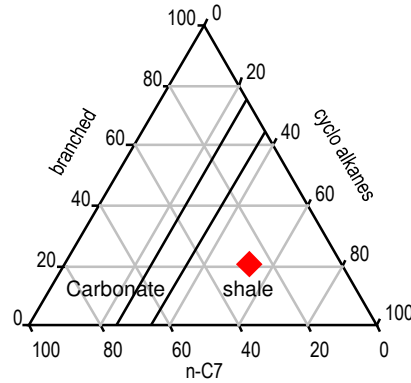


Peak areas	
1: Methane	
2: Ethane	
3: Propane	
4: 2-methylpropane (i-C4)	0
5: butane	2
6: 2-methylbutane (i-C5)	4
7: n-pentane	6
8: 2,2-dimethylbutane	
9: cyclopentane	2
10: 2,3-dimethylbutane	1
11: 2-methylpentane	4
12: 3-methylpentane	3
13: n-hexane	9
14: methylcyclopentane	5
15: 2,2-dimethylpentane	
16: benzene	1
17: 2,4-dimethylpentane	
18: 2,2,3-trimethylbutane	
19: Cyclohexane	7
20: 3,3-dimethylpentane	
21: 1,1-dimethylcyclopentane	1
22: 2-methylhexane	3
23: 2,3-dimethylpentane	2
24: 1c3-dimethylcyclopentane	2
25: 3-methylhexane	4
26: 1t3-dimethylcyclopentane	1
27: 1t2-dimethylcyclopentane	2
28: 3-ethylpentane	0
29: 2,2,4-trimethylpentane (Standard)	598
30: n-heptane	11
31: 1c2-dimethylcyclopentane	
32: methylcyclohexane	14
33: 1,1,3-trimethylcyclopentane	1
34: 2,2-dimethylhexane	
35: ethylcyclopentane	1
36: 2,5-dimethylhexane	1
37: 2,4-dimethylhexane	1
38: 2,2,3-trimethylpentane	
39: 1t2c4-trimethylcyclopentane	1
40: toluene	12

Alkane Distribution



Alkane/Cycloalkanes



C7 Alkanes (%)	
normal C7	56.58
monobranched	35.24
polybranched	8.18
Alkanes/cycloalkanes (%)	
normal C7	27.08
cycloalkanes	52.13
branched alkanes	20.79
Alkanes/cycloalkanes (%)	
normal C7	37.35
cycloalkanes	40.67
aromatics	21.98

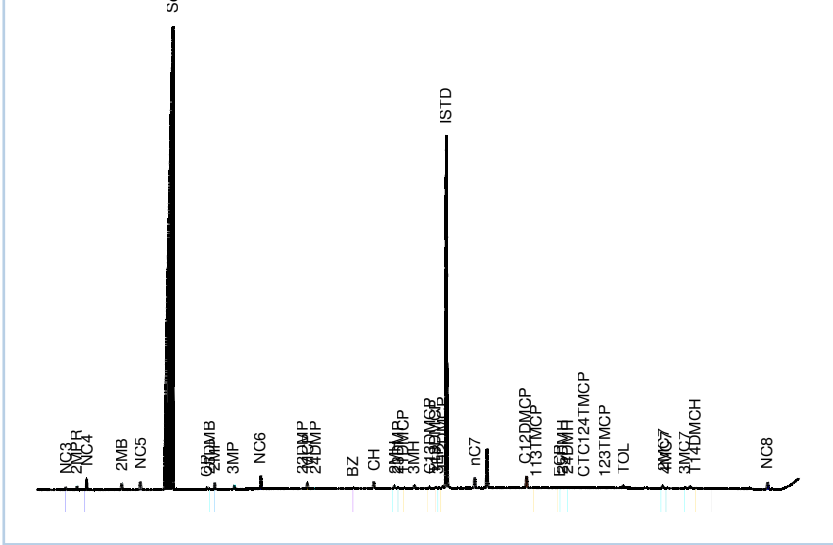
Parameters	
C7 fraction %	
C7 temperature (RWK)	132.40
C7 temperature (HOU)	
C7 VR/E	0.85
Prime sum	1.00
PCI	
Ring preference	
Three membered rings %	20.57
Five membered rings %	17.68
Six membered rings %	61.75

Comments: SAMPLE ANALYZED NEAT - LOW SIGNAL RESPONSE



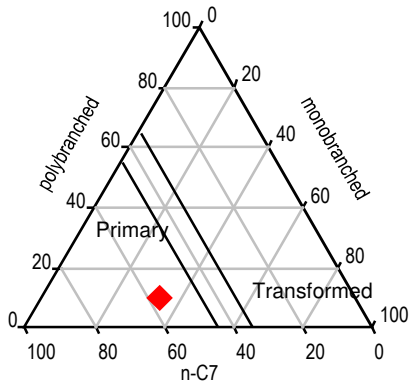
Country	United States	Sample id	FPC_1158648
Basin	UNKNOWN	Project	ZZPT/027520/010101
Lease	OCS-Y-2321	Request	FPC6196
Block	POSEY 6912	Sample type	Rock
Field	BURGER	Depth	6492.5ft
Well name	OCS-Y-2321 BURGER J 001	Age	Early Cretaceous
Latitude	71.1733498	Formation	Kup D
Longitude	-163.4718517	Reservoir	Kup D

GC gasoline fraction

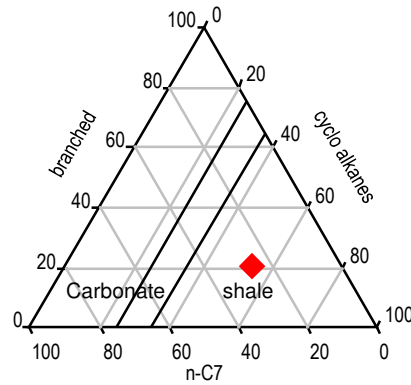


Peak areas	
1: Methane	
2: Ethane	
3: Propane	3
4: 2-methylpropane (i-C4)	4
5: butane	13
6: 2-methylbutane (i-C5)	11
7: n-pentane	17
8: 2,2-dimethylbutane	
9: cyclopentane	3
10: 2,3-dimethylbutane	1
11: 2-methylpentane	8
12: 3-methylpentane	5
13: n-hexane	18
14: methylcyclopentane	9
15: 2,2-dimethylpentane	0
16: benzene	2
17: 2,4-dimethylpentane	1
18: 2,2,3-trimethylbutane	
19: Cyclohexane	13
20: 3,3-dimethylpentane	
21: 1,1-dimethylcyclopentane	2
22: 2-methylhexane	5
23: 2,3-dimethylpentane	2
24: 1c3-dimethylcyclopentane	3
25: 3-methylhexane	6
26: 1t3-dimethylcyclopentane	3
27: 1t2-dimethylcyclopentane	5
28: 3-ethylpentane	1
29: 2,2,4-trimethylpentane (Standard)	685
30: n-heptane	20
31: 1c2-dimethylcyclopentane	26
32: methylcyclohexane	
33: 1,1,3-trimethylcyclopentane	2
34: 2,2-dimethylhexane	
35: ethylcyclopentane	2
36: 2,5-dimethylhexane	1
37: 2,4-dimethylhexane	1
38: 2,2,3-trimethylpentane	
39: 1t2c4-trimethylcyclopentane	2
40: toluene	7

Alkane Distribution



Alkane/Cycloalkanes



C7 Alkanes (%)	
normal C7	56.67
monobranched	33.26
polybranched	10.07
Alkanes/cycloalkanes (%)	
normal C7	26.67
cycloalkanes	52.93
branched alkanes	20.40
Alkanes/cycloalkanes (%)	
normal C7	42.90
cycloalkanes	48.24
aromatics	8.86

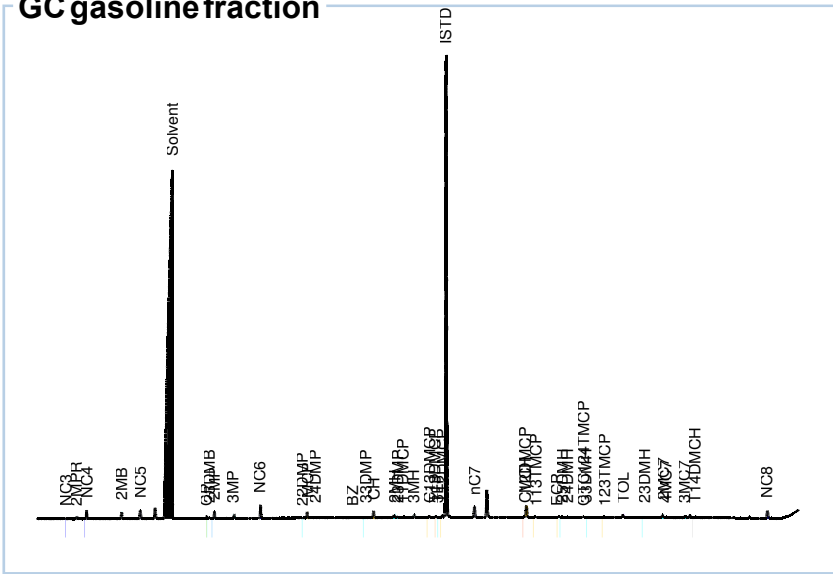
Parameters	
C7 fraction %	
C7 temperature (RWK)	132.91
C7 temperature (HOU)	124.31
C7 VR/E	0.86
Prime sum	0.67
PCI	0.01
Ring preference	
Three membered rings %	24.56
Five membered rings %	63.73
Six membered rings %	11.70

Comments: SAMPLE ANALYZED NEAT - LOW SIGNAL RESPONSE



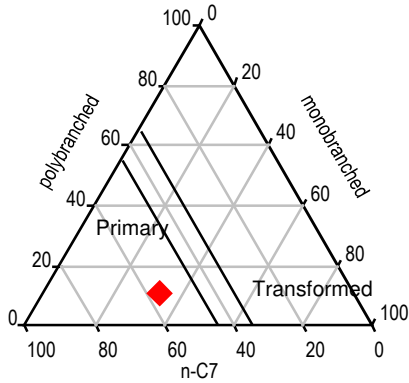
Country	United States	Sample id	FPC_1158650
Basin	UNKNOWN	Project	ZZPT/027520/010101
Lease	OCS-Y-2321	Request	FPC6196
Block	POSEY 6912	Sample type	Rock
Field	BURGER	Depth	6521.3ft
Well name	OCS-Y-2321 BURGER J 001	Age	Early Cretaceous
Latitude	71.1733498	Formation	Kup D
Longitude	-163.4718517	Reservoir	Kup D

GC gasoline fraction

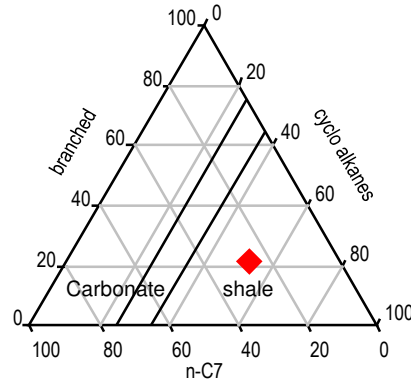


Peak areas	
1: Methane	
2: Ethane	
3: Propane	2
4: 2-methylpropane (i-C4)	4
5: butane	12
6: 2-methylbutane (i-C5)	13
7: n-pentane	20
8: 2,2-dimethylbutane	
9: cyclopentane	4
10: 2,3-dimethylbutane	2
11: 2-methylpentane	11
12: 3-methylpentane	7
13: n-hexane	22
14: methylcyclopentane	12
15: 2,2-dimethylpentane	1
16: benzene	2
17: 2,4-dimethylpentane	1
18: 2,2,3-trimethylbutane	
19: Cyclohexane	15
20: 3,3-dimethylpentane	1
21: 1,1-dimethylcyclopentane	2
22: 2-methylhexane	6
23: 2,3-dimethylpentane	3
24: 1c3-dimethylcyclopentane	3
25: 3-methylhexane	8
26: 1t3-dimethylcyclopentane	3
27: 1t2-dimethylcyclopentane	6
28: 3-ethylpentane	1
29: 2,2,4-trimethylpentane (Standard)	1119
30: n-heptane	26
31: 1c2-dimethylcyclopentane	1
32: methylcyclohexane	31
33: 1,1,3-trimethylcyclopentane	3
34: 2,2-dimethylhexane	
35: ethylcyclopentane	2
36: 2,5-dimethylhexane	1
37: 2,4-dimethylhexane	1
38: 2,2,3-trimethylpentane	
39: 1t2c4-trimethylcyclopentane	2
40: toluene	8

Alkane Distribution



Alkane/Cycloalkanes



C7 Alkanes (%)	
normal C7	56.05
monobranched	32.80
polybranched	11.15
Alkanes/cycloalkanes (%)	
normal C7	27.09
cycloalkanes	51.67
branched alkanes	21.24
Alkanes/cycloalkanes (%)	
normal C7	44.62
cycloalkanes	47.71
aromatics	7.67

Parameters	
C7 fraction %	
C7 temperature (RWK)	133.10
C7 temperature (HOU)	120.46
C7 VR/E	0.86
Prime sum	0.88
PCI	0.06
Ring preference	
Three membered rings %	26.15
Five membered rings %	22.96
Six membered rings %	50.89

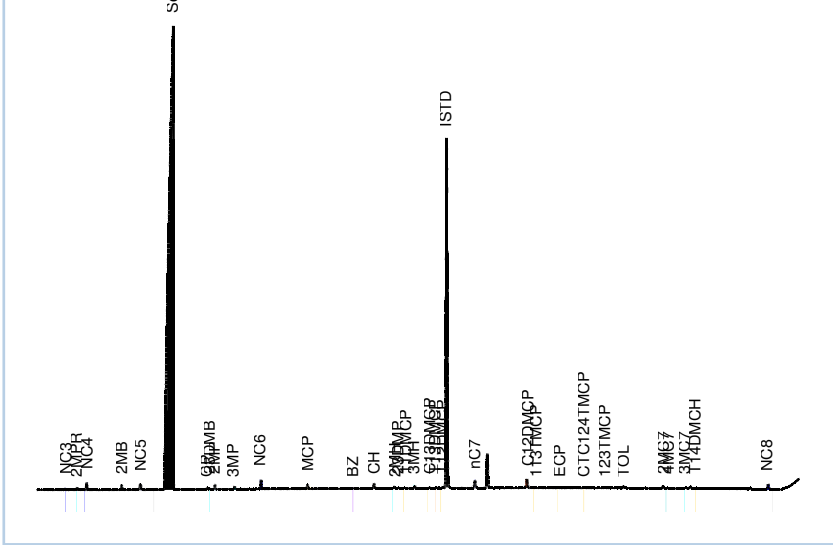
Comments: SAMPLE ANALYZED NEAT - LOW SIGNAL RESPONSE





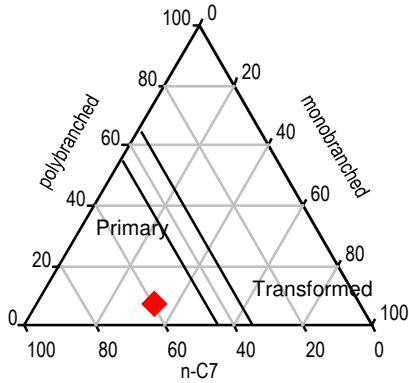
Country	United States	Sample id	FPC_1158653
Basin	UNKNOWN	Project	ZZPT/027520/010101
Lease	OCS-Y-2321	Request	FPC6196
Block	POSEY 6912	Sample type	Rock
Field	BURGER	Depth	6500.5ft
Well name	OCS-Y-2321 BURGER J 001	Age	Early Cretaceous
Latitude	71.1733498	Formation	Kup D
Longitude	-163.4718517	Reservoir	Kup D

GC gasoline fraction

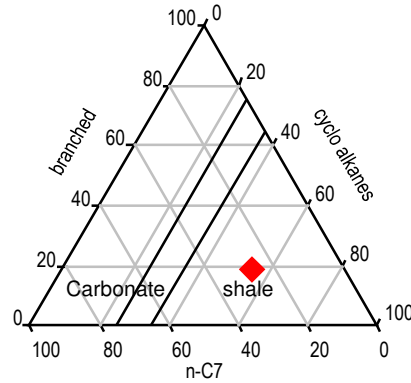


Peak areas	
1: Methane	
2: Ethane	
3: Propane	2
4: 2-methylpropane (i-C4)	3
5: butane	8
6: 2-methylbutane (i-C5)	8
7: n-pentane	12
8: 2,2-dimethylbutane	
9: cyclopentane	2
10: 2,3-dimethylbutane	1
11: 2-methylpentane	6
12: 3-methylpentane	4
13: n-hexane	13
14: methylcyclopentane	7
15: 2,2-dimethylpentane	
16: benzene	1
17: 2,4-dimethylpentane	
18: 2,2,3-trimethylbutane	
19: Cyclohexane	9
20: 3,3-dimethylpentane	
21: 1,1-dimethylcyclopentane	1
22: 2-methylhexane	4
23: 2,3-dimethylpentane	2
24: 1c3-dimethylcyclopentane	2
25: 3-methylhexane	5
26: 1t3-dimethylcyclopentane	2
27: 1t2-dimethylcyclopentane	3
28: 3-ethylpentane	
29: 2,2,4-trimethylpentane (Standard)	679
30: n-heptane	15
31: 1c2-dimethylcyclopentane	19
32: methylcyclohexane	
33: 1,1,3-trimethylcyclopentane	1
34: 2,2-dimethylhexane	
35: ethylcyclopentane	1
36: 2,5-dimethylhexane	
37: 2,4-dimethylhexane	
38: 2,2,3-trimethylpentane	
39: 1t2c4-trimethylcyclopentane	1
40: toluene	5

Alkane Distribution



Alkane/Cycloalkanes



C7 Alkanes (%)	
normal C7	59.00
monobranched	33.17
polybranched	7.83
Alkanes/cycloalkanes (%)	
normal C7	27.09
cycloalkanes	54.08
branched alkanes	18.83
Alkanes/cycloalkanes (%)	
normal C7	41.88
cycloalkanes	49.33
aromatics	8.78

Parameters	
C7 fraction %	
C7 temperature (RWK)	133.17
C7 temperature (HOU)	
C7 VR/E	0.86
Prime sum	0.83
PCI	
Ring preference	
Three membered rings %	22.81
Five membered rings %	65.52
Six membered rings %	11.67

Comments: SAMPLE ANALYZED NEAT - LOW SIGNAL RESPONSE