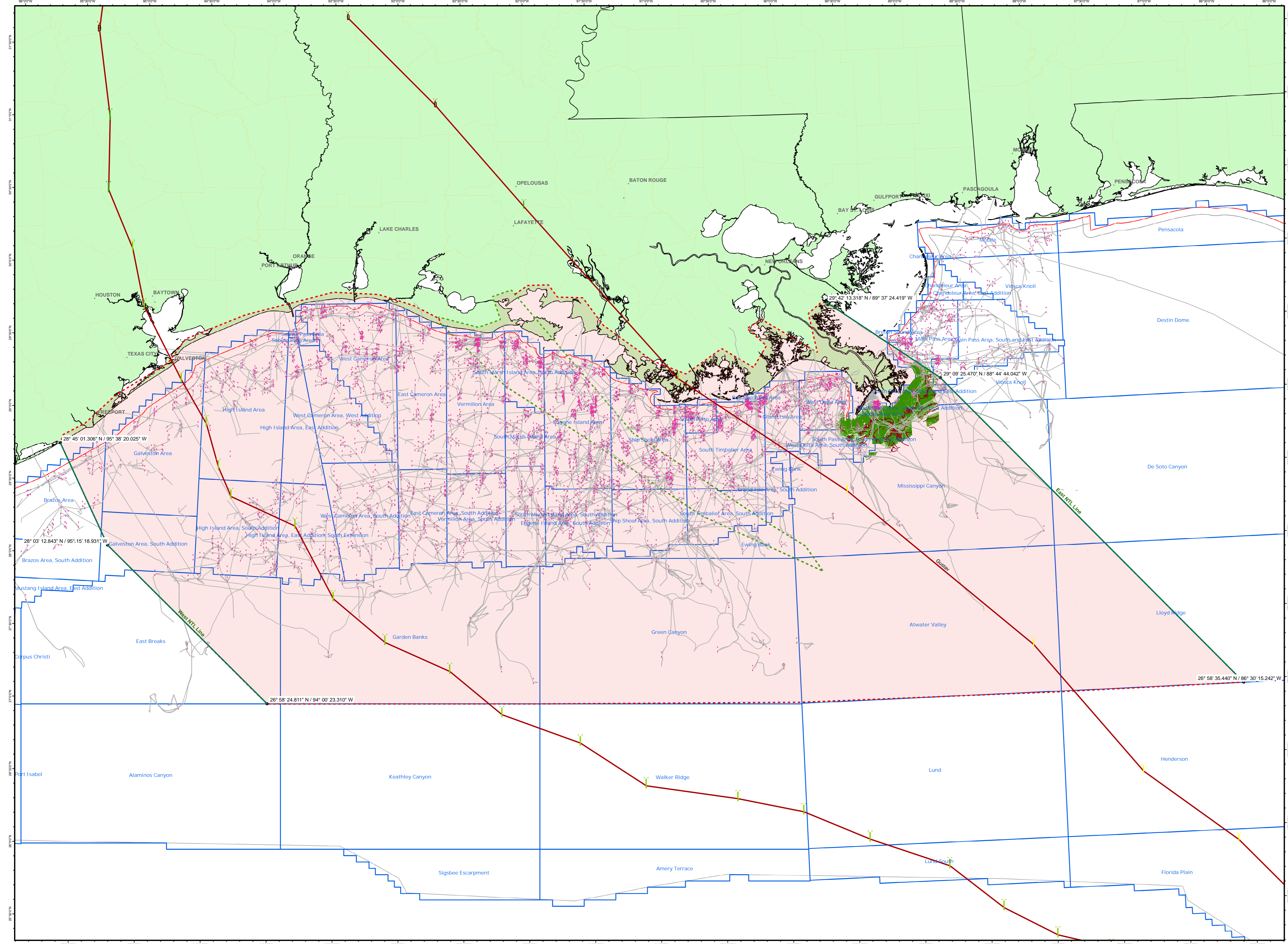


NTL Impact Area Map



LEGEND

| | |
|---|-------------------------------------|
| • | NTL Line |
| • | NTL Points |
| Gustav Points STORM_CAT, STORM_TYPE | |
| — | 5, Hurricane |
| — | 4, Hurricane |
| — | 3, Hurricane |
| — | 2, Hurricane |
| — | 1, Hurricane |
| — | 0, Tropical Storm |
| — | 0, Invest |
| — | 0, Tropical Depression |
| — | Gustav Track |
| Ike Points STORM_CAT, STORM_TYPE | |
| — | 5, Hurricane |
| — | 4, Hurricane |
| — | 3, Hurricane |
| — | 2, Hurricane |
| — | 1, Hurricane |
| — | 0, Tropical Storm |
| — | 0, Invest |
| — | 0, Tropical Depression |
| — | Ike Track |
| — | Platforms - Active |
| — | Cities |
| — | Pipelines |
| — | Tropical Storm Speed |
| — | Hurricane Speed |
| — | Hurricane Force Winds (Approximate) |
| — | Protractions |
| — | Mudslide_geology |
| — | Continental Shelf Boundary (CSB) |
| — | Mudslide4_contour |
| — | 8gline |
| — | States |
| — | Mudslide |
| — | Counties |
| — | Shaded Coastline |

Created by Minerals Management Service
Information Technology Division
Data Source: Technical Information Management System
September 23, 2008

This map has been prepared from existing data. The Minerals Management Service does not guarantee its accuracy or take responsibility for reliance thereon. It is not to be used for navigational purposes or Federal Leasing.

