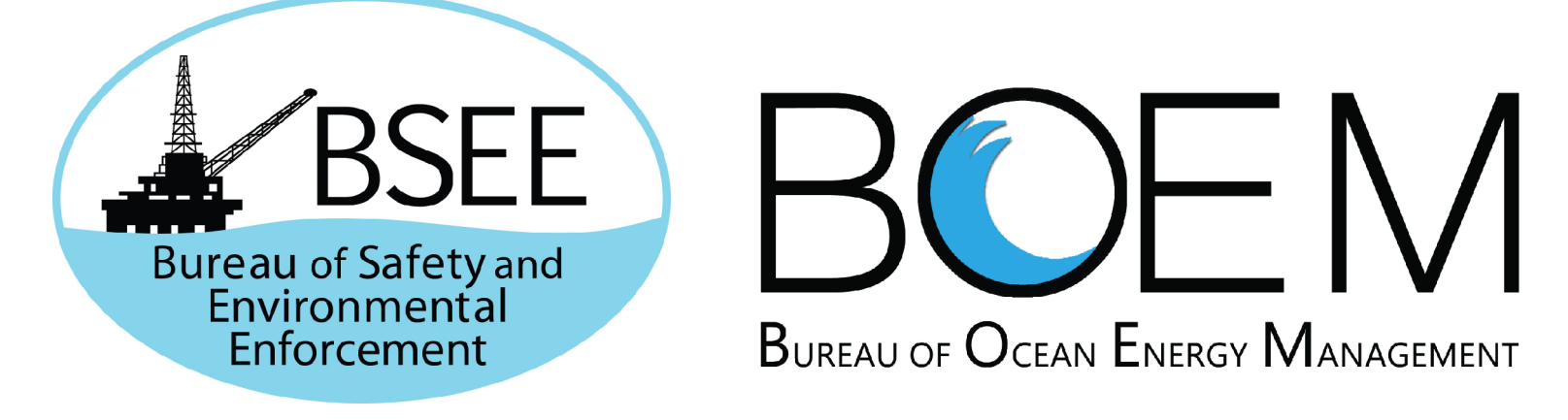


Updated October, 2020

Legend

- Federal Platforms (as of 10/2020)
- Platforms Without Active Leases (as of 10/2020)
- Federal Leases (as of 10/2020)
- Federal Unit Boundary
- State Platforms/Production Facilities (as of 10/2020)
- Producing State Leases (as of 10/2020)
- Non Producing State Leases
- Onshore Facilities
- Pipelines
- Oil Spill Response Vessels
- Known Oil/Gas Field Outline
- Bathymetry Contour Interval 200m
- Channel Islands National Marine Sanctuary (CINMS)
- Channel Islands National Park
- Shipping Lanes
- Submerged Lands Act Boundary (SLA)
- 8 (g) Line
- County Boundary

Leases North of P 0315 and P 0316 are in the UTM Zone 10N Coordinate System (Meters)



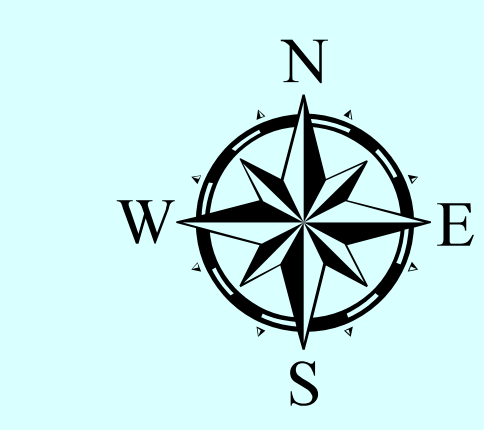
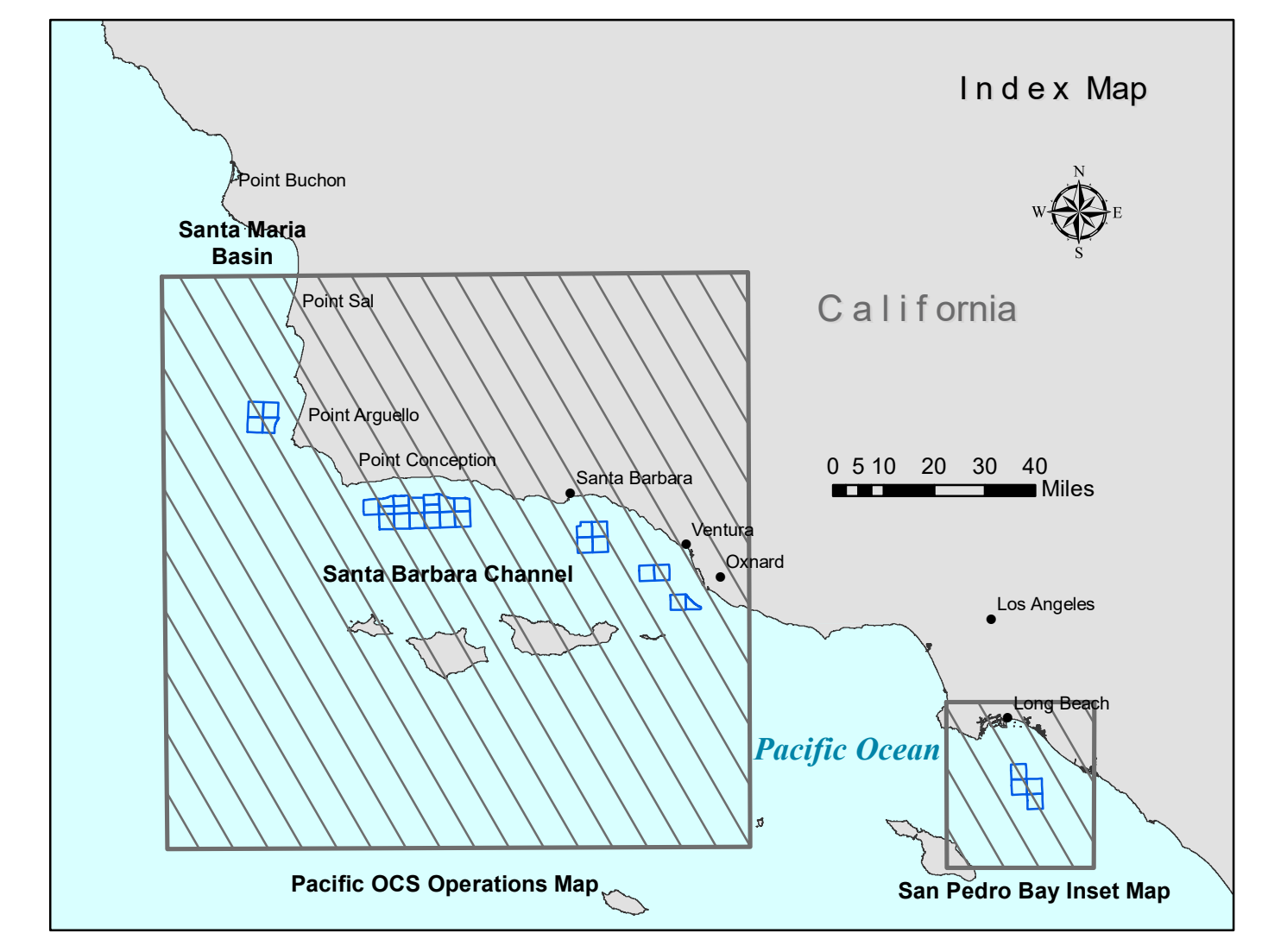
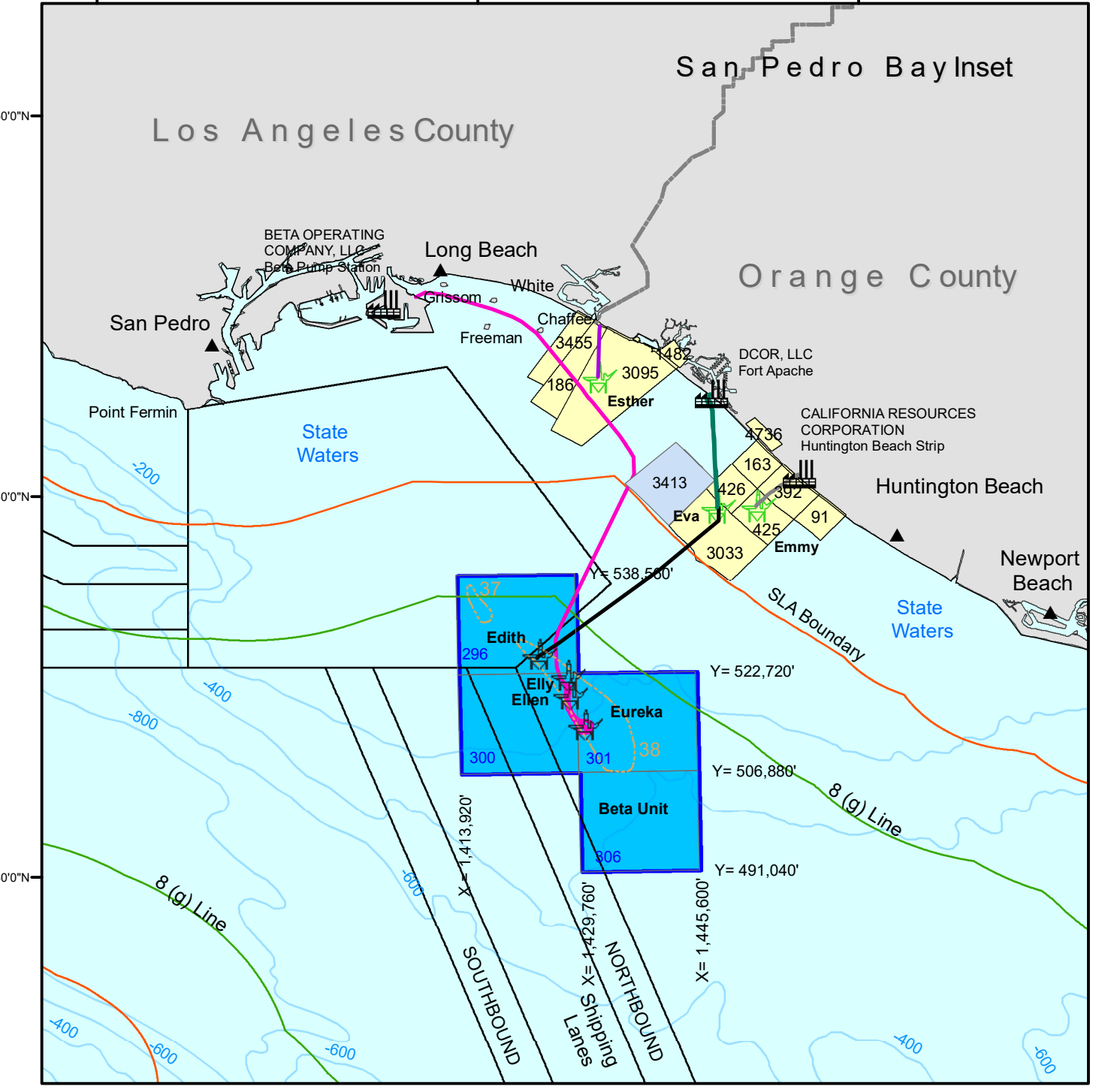
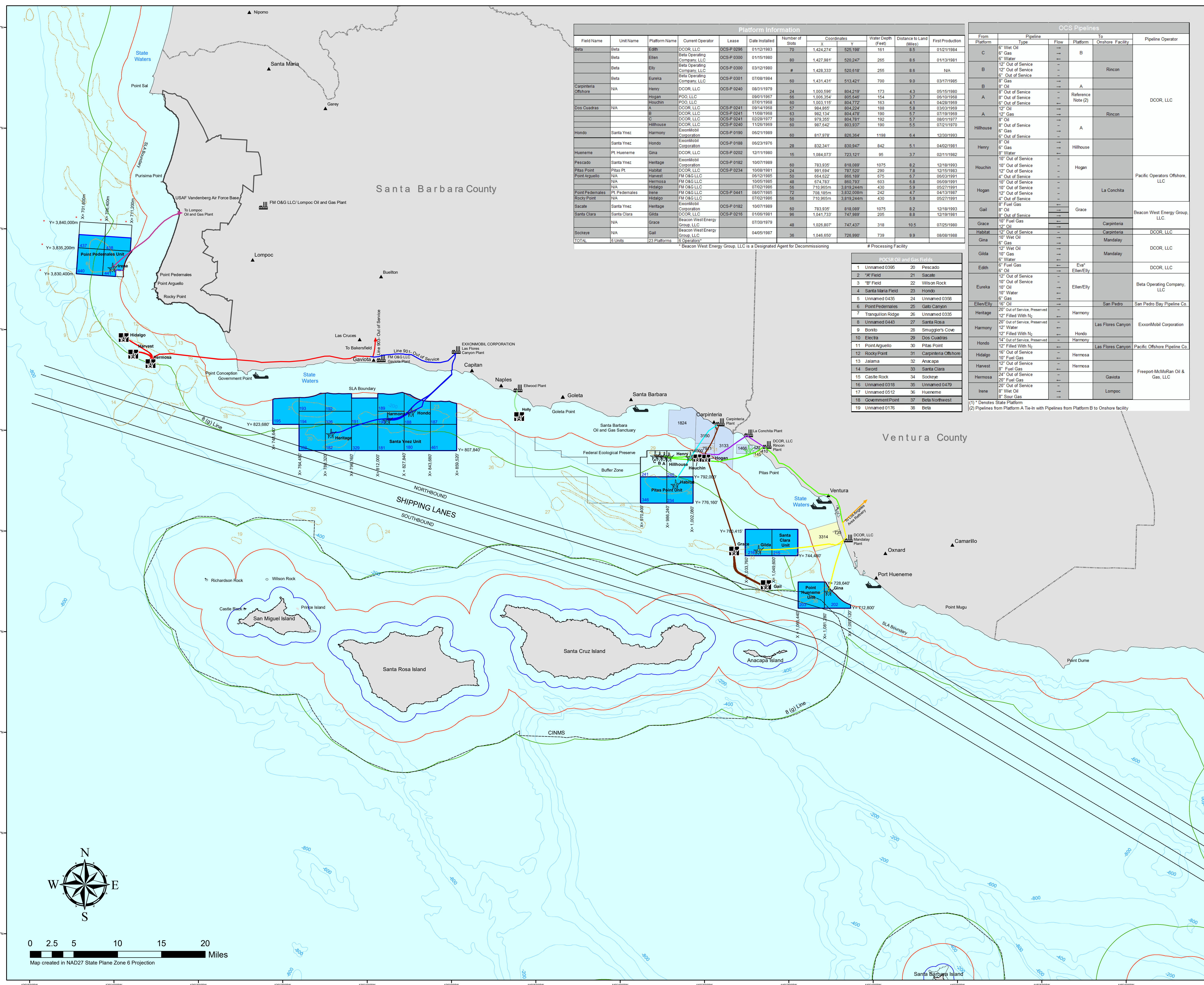
This map has been carefully prepared from the best existing data sources available at the time of its completion, but the Bureau of Ocean Energy Management and the Bureau of Safety and Environmental Enforcement does not guarantee the accuracy and are not responsible or liable for reliance thereon. It is not a legal document for federal leasing purposes nor is it to be used for navigation. The OCS Official Protraction Diagram and Leasing Maps should be consulted for area measurements and location of individual blocks.

Platform Information											
Field Name	Unit Name	Platform Name	Current Operator	Lease	Date Installed	Number of Slots	Coordinates		Water Depth (Fath)	Distance to Land (Miles)	First Production
							X	Y			
Beta	Beta	Edith	DCOR LLC	DCS-P-0296	01/21/1983	70	1,424,274	525,198	161	8.5	01/21/1984
Beta	Beta	Ellen	Beta Operating Company, LLC	DCS-P-0300	01/15/1989	80	1,427,881	520,247	265	8.6	01/13/1981
Beta	Beta	Ely	Beta Operating Company, LLC	DCS-P-0300	03/12/1990	#	1,429,333	520,918	255	8.6	N/A
Beta	Beta	Eureka	Beta Operating Company, LLC	DCS-P-0301	07/08/1984	60	1,431,431	513,421	700	9.0	03/17/1985
Carpenteria Offshore	N/A	Henry	DCOR LLC	DCS-P-0240	08/31/1979	24	1,000,598	894,219	173	4.3	05/15/1980
		Hogan	POO LLC	08/01/1987	68	1,000,354	891,649	154	3.7	09/10/1988	
		Houchin	POO LLC	07/01/1968	60	1,003,115	894,772	163	4.1	04/28/1969	
Dos Cuadras	N/A	A	DCOR LLC	DCS-P-0241	09/14/1988	57	884,895	894,224	188	5.8	03/03/1989
		B	DCOR LLC	DCS-P-0241	11/08/1988	63	892,134	894,478	190	5.7	07/19/1989
		C	DCOR LLC	DCS-P-0241	02/28/1977	60	979,355	894,781	192	5.7	08/01/1977
Hillhouse	N/A	Hillhouse	ExxonMobil Corporation	DCS-P-0240	11/26/1989	60	987,642	893,937	190	5.5	07/21/1979
Hondo	Santa Ynez	Harmony	ExxonMobil Corporation	DCS-P-0190	06/21/1989	60	817,878	826,364	1198	6.4	12/30/1993
Hueneme	PL Hueneme	Gina	DCOR LLC	DCS-P-0202	12/11/1980	15	1,084,073	723,121	95	3.7	02/11/1982
Pescado	Santa Ynez	Heritage	ExxonMobil Corporation	DCS-P-0182	10/07/1989	60	783,835	818,089	1075	8.2	12/18/1993
Pitas Point	Pitas Pt	Habitat	DCOR LLC	DCS-P-0234	10/08/1981	24	991,694	787,520	290	7.8	12/18/1983
Point Arguello	N/A	Harvest	FM O&G LLC	06/12/1985	50	884,622	888,189	675	6.7	06/03/1991	
Point Pedernales	N/A	Hermosa	FM O&G LLC	10/05/1985	48	874,783	880,783	693	6.8	06/08/1991	
Point Arguello	N/A	Hidalgo	FM O&G LLC	07/02/1985	56	710,955	3,919,244	430	5.9	05/27/1991	
Point Pedernales	PL Pedernales	Irene	FM O&G LLC	DCS-P-0441	08/07/1985	72	708,185	3,832,088	242	4.7	04/13/1987
Rincon Point	N/A	Hidalgo	FM O&G LLC	07/02/1985	58	710,955	3,919,244	430	5.9	05/27/1991	
Sacale	Santa Ynez	Heritage	ExxonMobil Corporation	DCS-P-0182	10/07/1989	60	783,835	818,089	1075	8.2	12/18/1993
Santa Clara	Santa Clara	Gilda	DCOR LLC	DCS-P-0216	01/05/1981	98	1,044,733	747,989	295	8.8	12/18/1981
Sidrehe	N/A	Grace	Beacon West Energy Group, LLC	07/30/1979	48	1,026,807	747,437	318	10.5	07/25/1980	
Sidrehe	N/A	Gail	Beacon West Energy Group, LLC	04/05/1987	36	1,046,657	726,990	739	9.9	08/08/1988	
TOTAL	6 Units	23 Platforms	1 Beacon West Energy Group, LLC is a Designated Agent for Decommissioning								

POCSR Oil and Gas Fields		
1	Unnamed 0395	20
2	*X Field	21
3	*R Field	22
4	Santa Maria Field	23
5	Unnamed 0435	24
6	Point Pedernales	25
7	Tranquillon Ridge	26
8	Unnamed 0443	27
9	Bonito	28
10	Electra	29
11	Point Arguello	30
12	Rocky Point	31
13	Jalama	32
14	Sword	33
15	Castle Rock	34
16	Unnamed 0318	35
17	Unnamed 0512	36
18	Government Point	37
19	Unnamed 0176	38

OCS Pipelines									
From Platform	Pipeline Type	Flow	To Platform	Onshore Facility	Pipeline Operator				
C	6" Wet Oil	---	B						
B	6" Gas	---		Rincon					
B	12" Out of Service	---							
B	12" Out of Service	---							
B	8" Gas	---							
A	8" Oil	---	A						
A	8" Out of Service	---							
A	8" Out of Service	---							
A	12" Oil	---		Rincon					
Hillhouse	8" Oil	---							
Hillhouse	8" Out of Service	---	A						
Henry	8" Oil	---							
Henry	8" Gas	---							
Henry	8" Water	---							
Houchin	10" Out of Service	---							
Houchin	10" Out of Service	---	Hogan						
Houchin	12" Out of Service	---							
Houchin	10" Out of Service	---							
Houchin	12" Out of Service	---							
Houchin	12" Out of Service	---							
Hogan	10" Out of Service	---							
Hogan	12" Out of Service	---							
Hogan	8" Fuel Gas	---							
Gail	8" Oil	---	Grace						
Gail	8" Out of Service	---							
Grace	10" Fuel Gas	---							
Grace	12" Oil	---							
Gina	10" Wet Oil	---							
Gina	6" Gas	---							
Gilda	10" Gas	---							
Gilda	8" Water	---							
Edith	8" Oil	---							
Edith	12" Out of Service	---							
Eureka	10" Out of Service	---							
Eureka	10" Water	---							
Ely/Ely	16" Oil	---							
Ely/Ely	20" Out of Service, Preserves	---							
Heritage	12" Filled With N <sub>2</sub>	---							
Heritage	20" Out of Service, Preserves	---							
Harmony	12" Water	---							
Harmony	12" Filled With N <sub>2</sub>	---							
Hondo	12" Out of Service, Preserves	---							
Hondo	12" Filled With N <sub>2</sub>	---							
Hidalgo	16" Out of Service	---							
Hidalgo	12" Fuel Gas	---							
Harvest	12" Out of Service	---							
Hermosa	8" Fuel Gas	---							
Hermosa	20" Out of Service	---							
Hermosa	8" Fuel Gas	---							
Irene	20" Out of Service	---							
Irene	8" Wet Oil	---							
Irene	8" Sour Gas	---							

(1) \* Denotes State Platform  
(2) Pipelines from Platform A Tie-in with Pipelines from Platform B to Onshore facility



0 2.5 5 10 15 20 Miles  
Map created in NAD27 State Plane Zone 6 Projection