



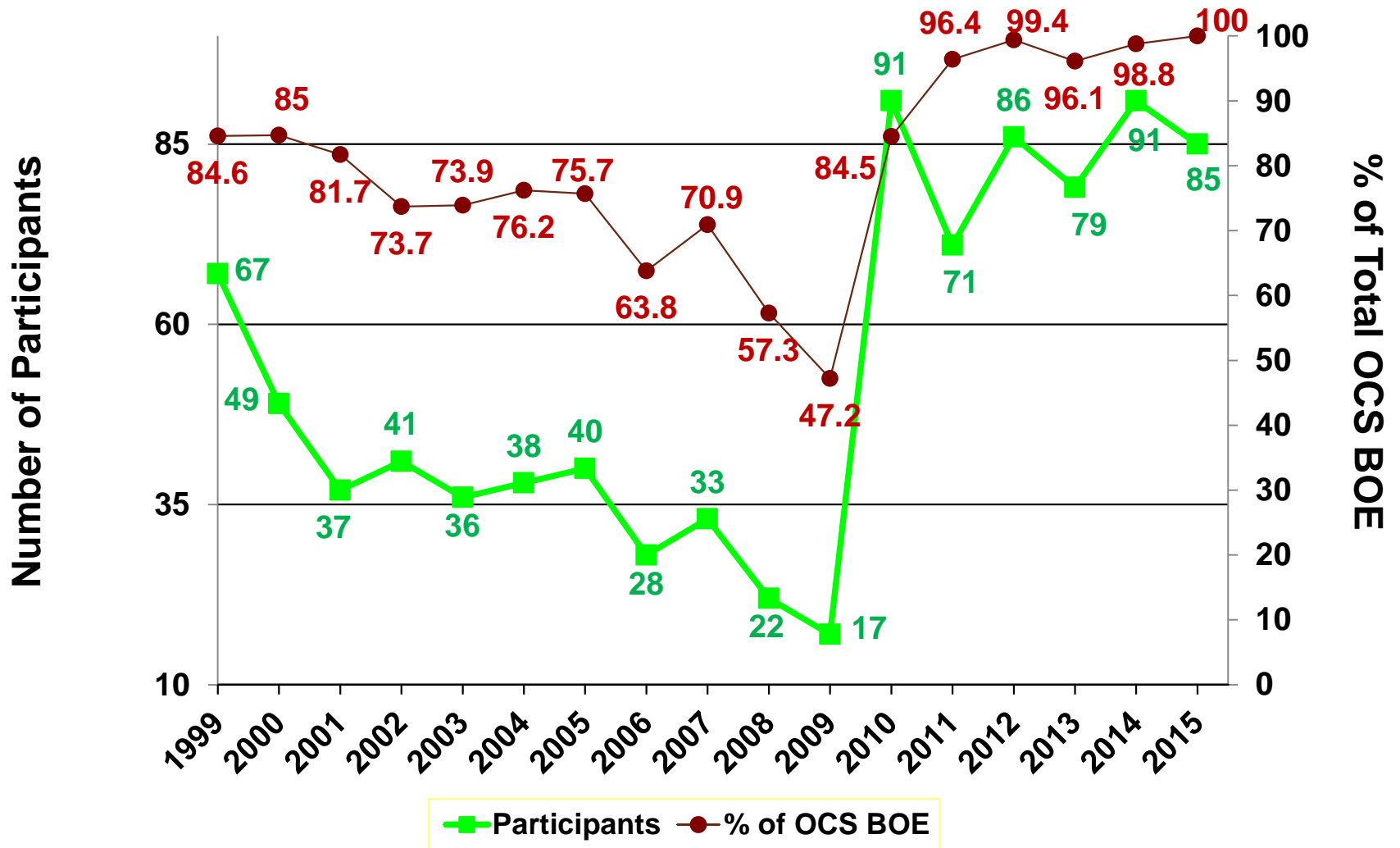
OCS Performance Measures 2015 Index Charts

J. Gabe Durand
June 2016

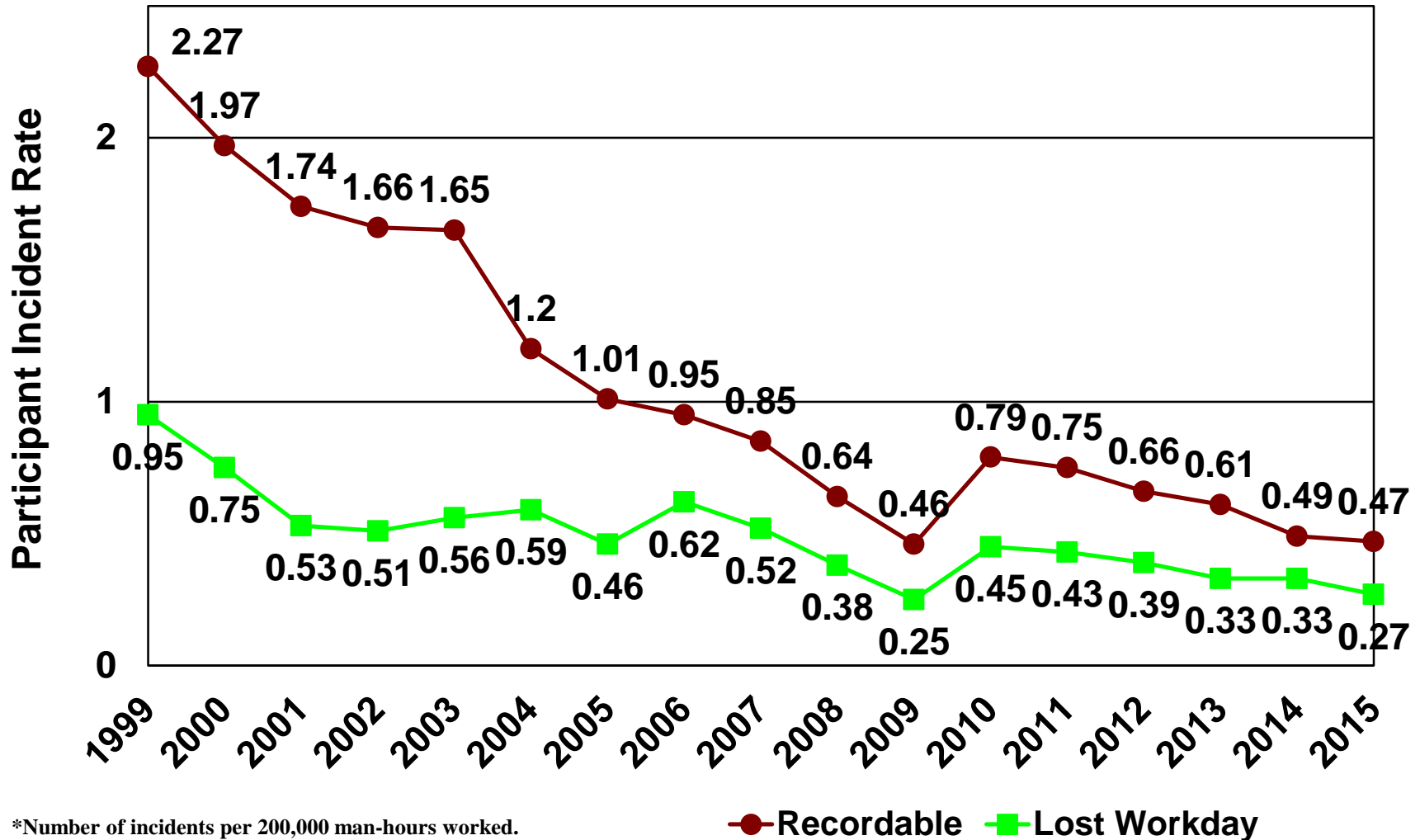
“To promote safety, protect the environment and conserve resources offshore through vigorous regulatory oversight and enforcement.”

OCS Performance Data

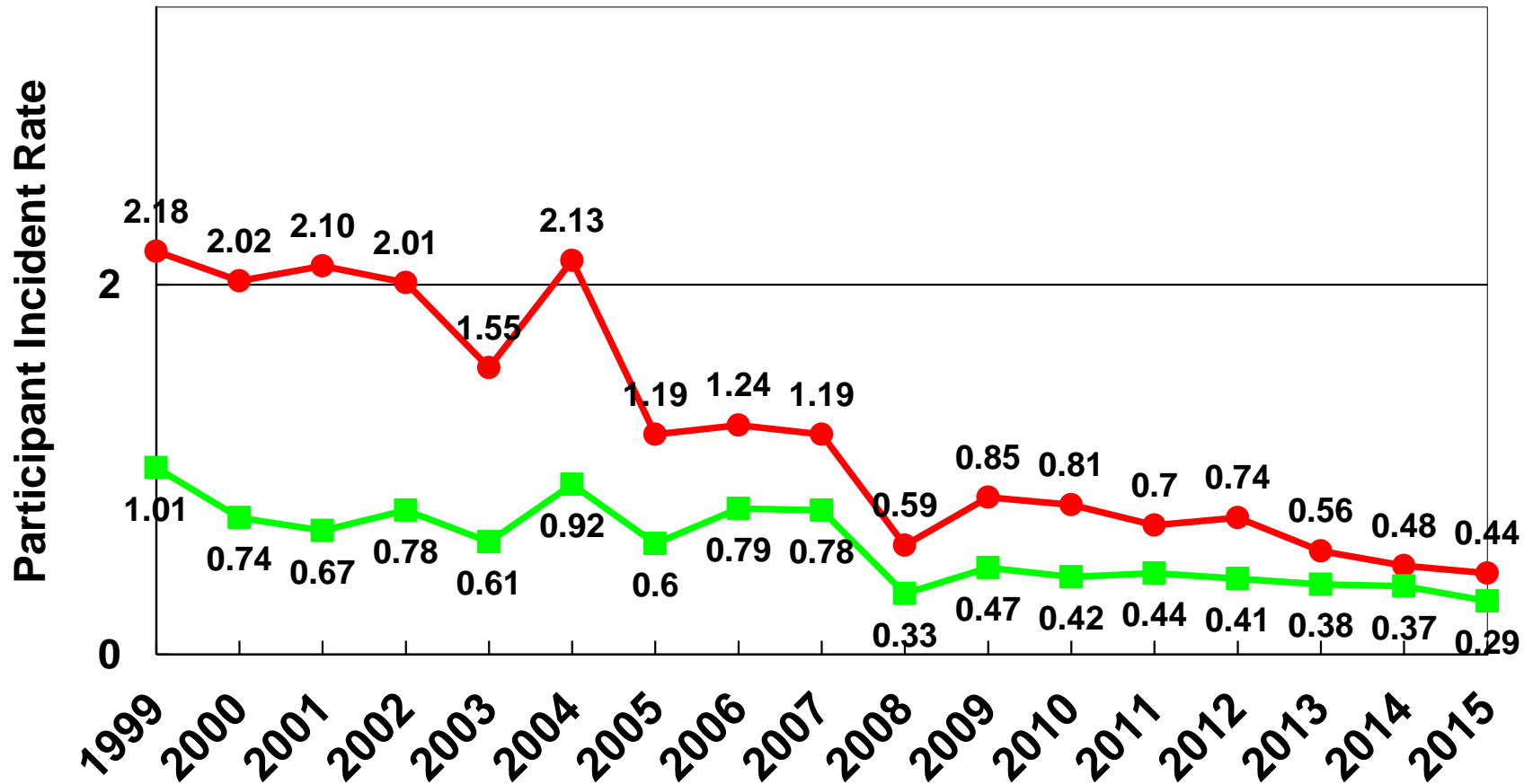
Survey Participation



Combined Operations Recordable and Lost Workday/DART Case Incident Rates*



Production Operations Recordable and Lost Workday/DART Case Incident Rates*

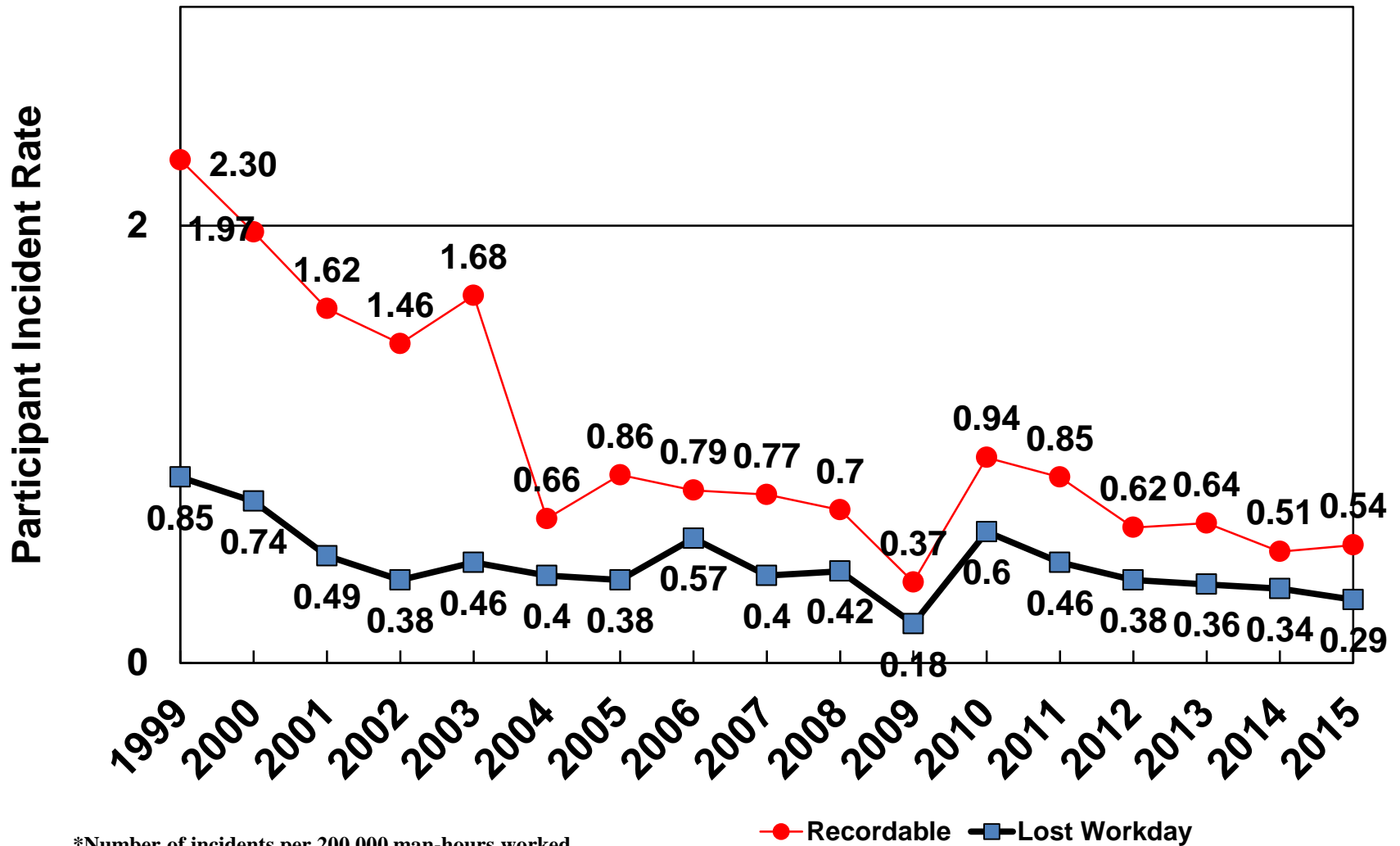


*Number of incidents per 200,000 man-hours worked.

● Recordable

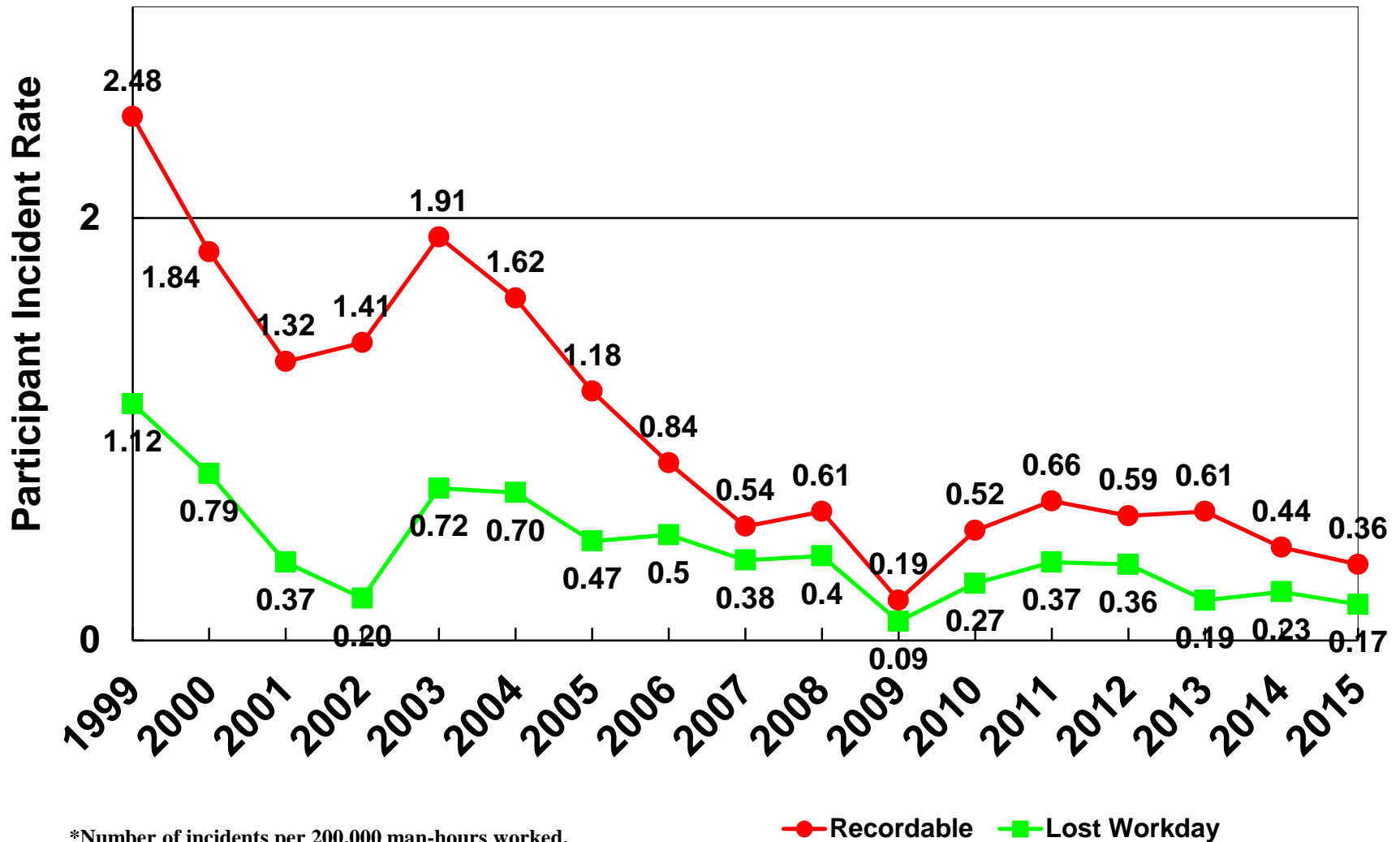
■ Lost Workday

Drilling Operations Recordable and Lost Workday/DART Case Incident Rates*

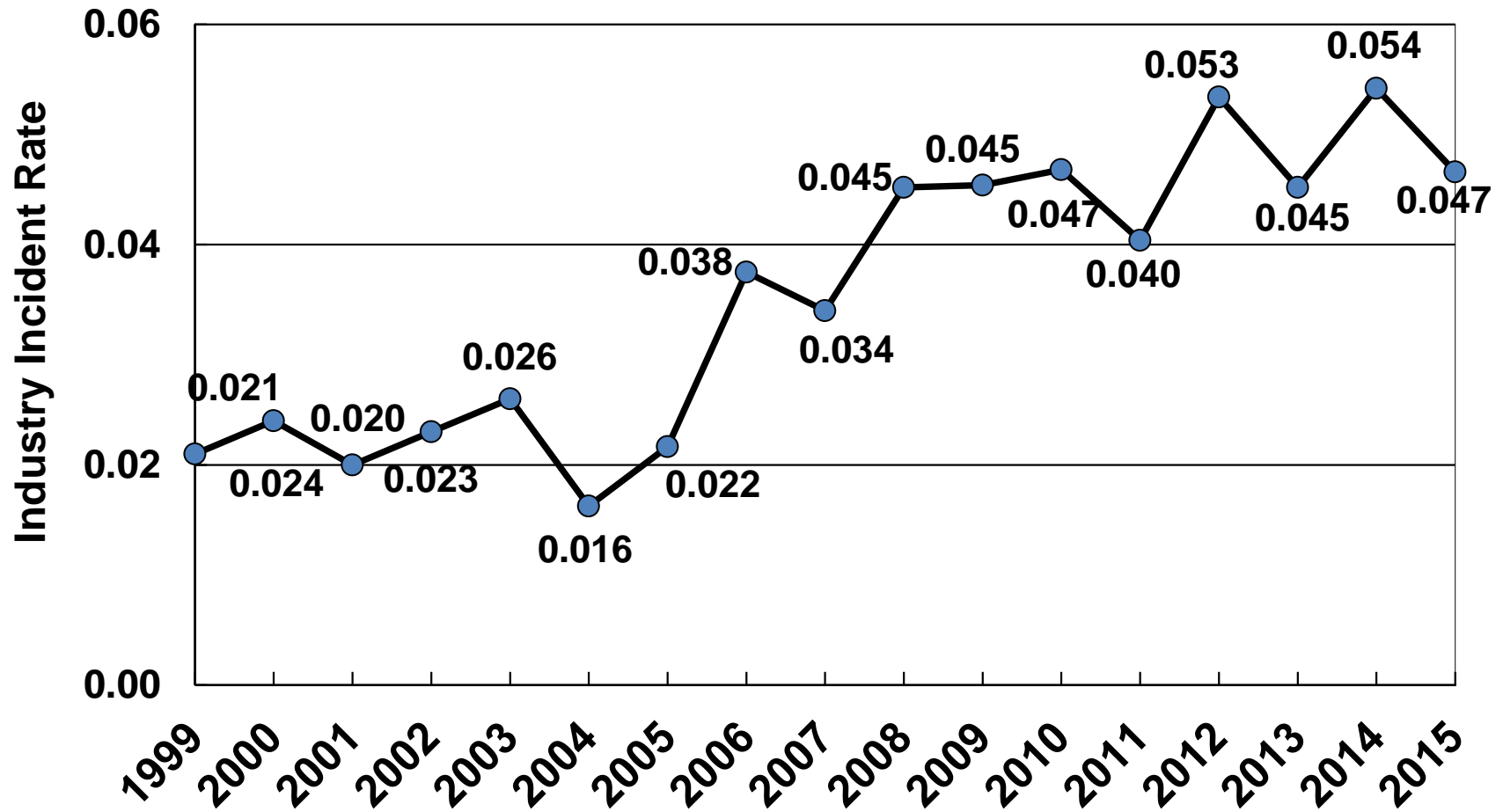


*Number of incidents per 200,000 man-hours worked.

Construction Operations Recordable and Lost Workday/DART Case Incident Rates*

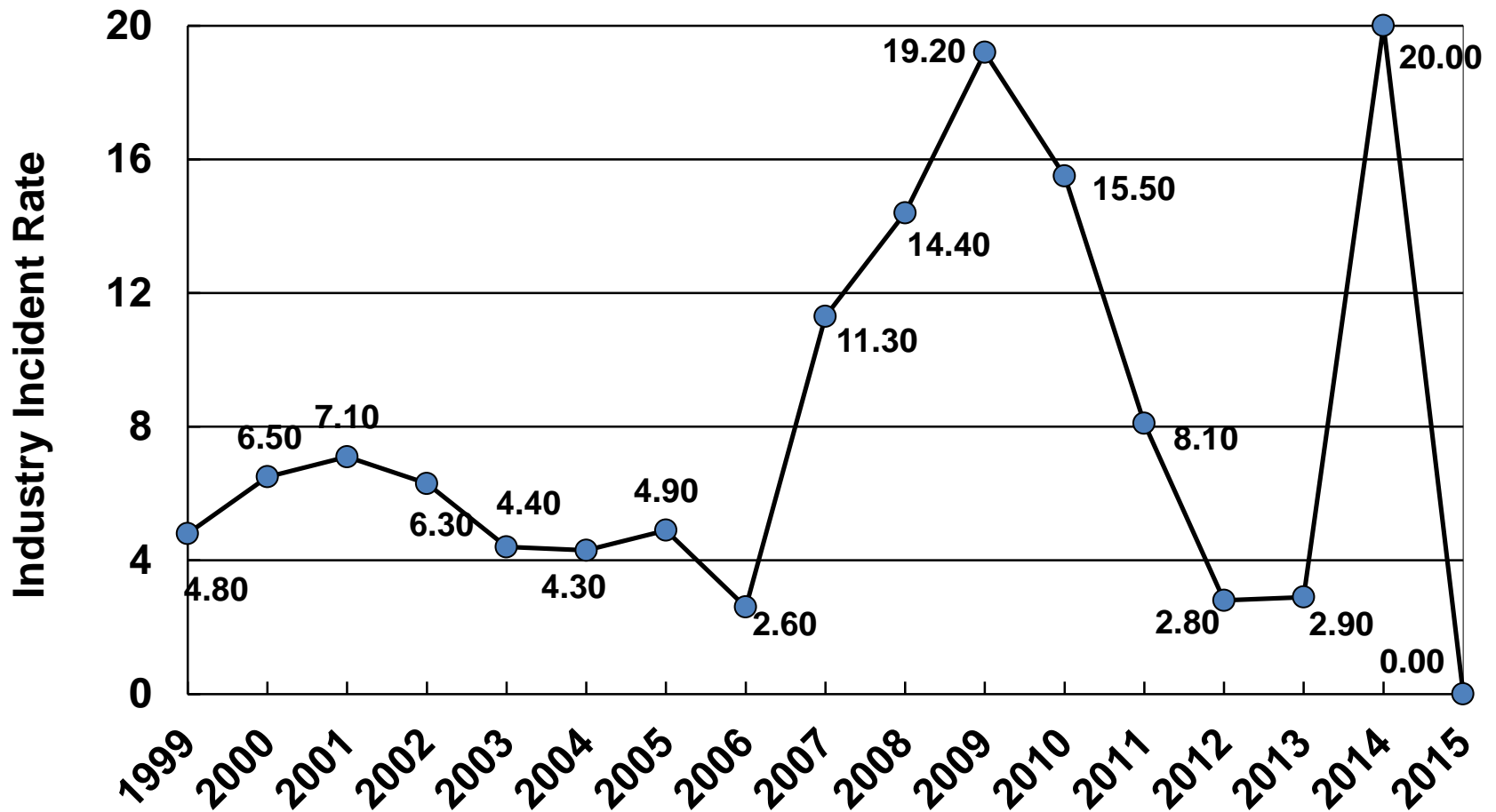


Fire and Explosion Incident Rate*



*Ratio of fires and explosions to number of platforms and wells spudded.

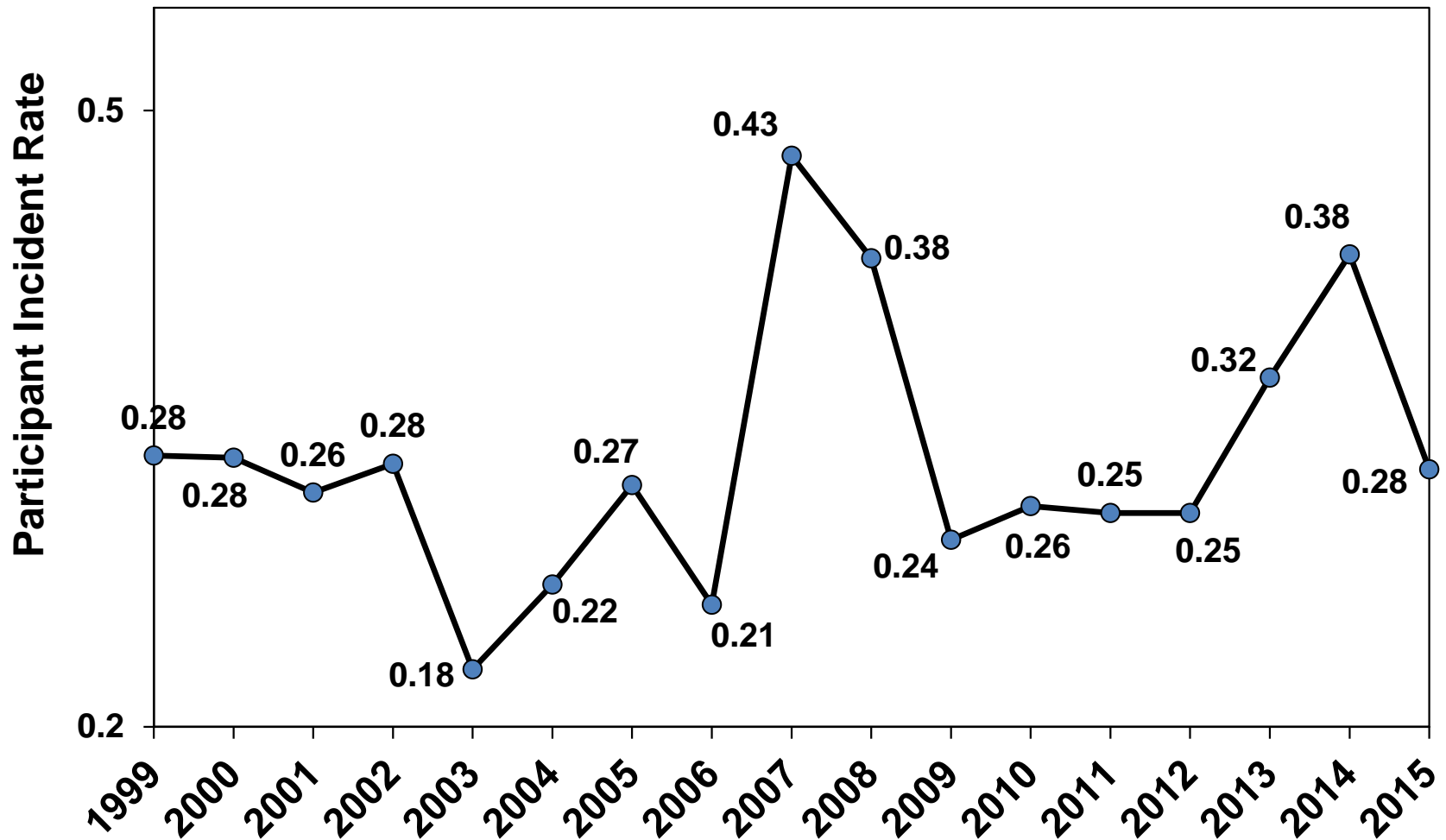
Loss of Well Control Incident Rate*



*Per 1,000 wells spud. BSEE's incident reporting requirements were changed effective July 17, 2006 to require reporting of all losses of well control. Formerly called "Blowout Rate".

Oil Spill Number Incident Rate

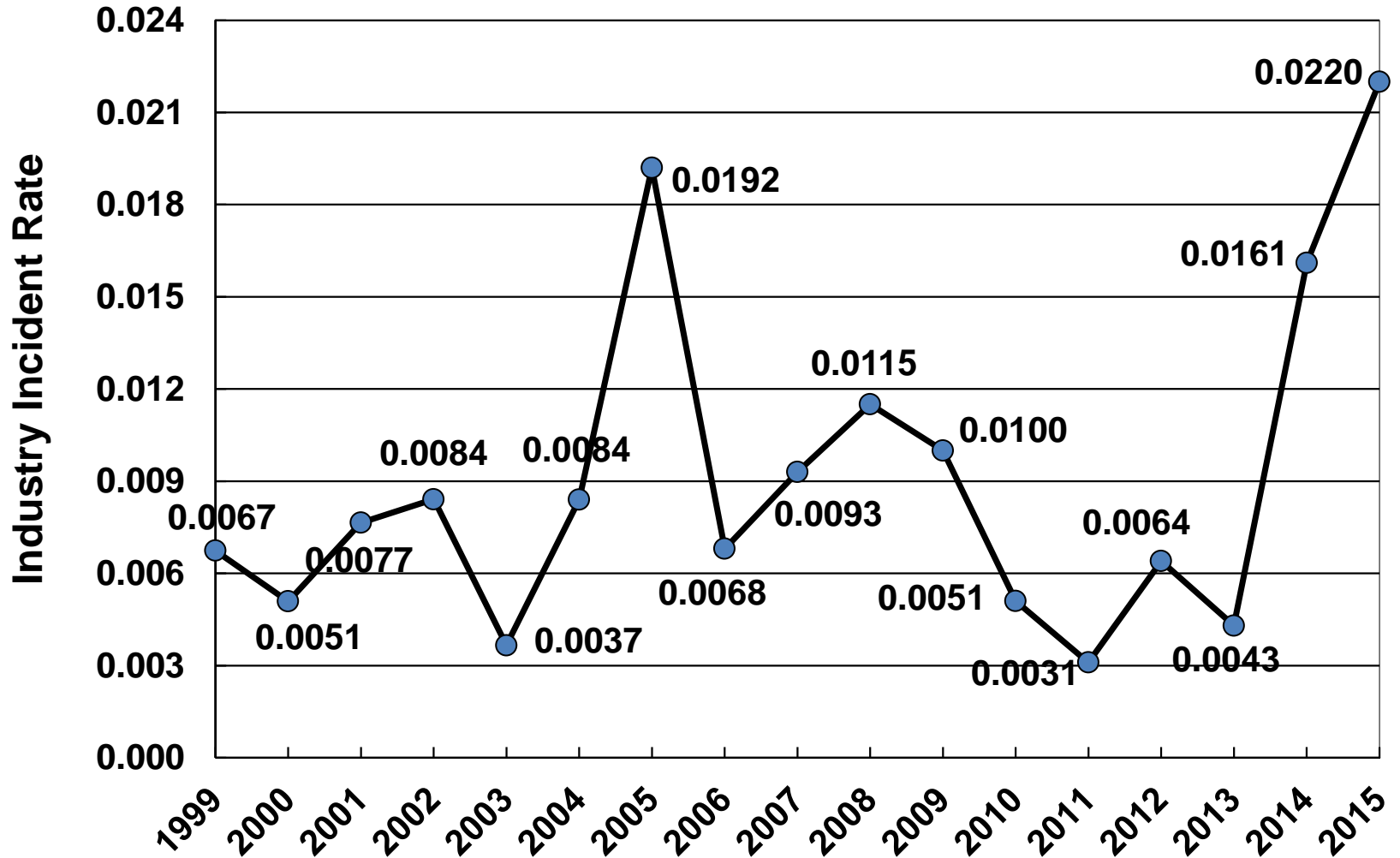
Spills <1 bbl



*Ratio of number of spills < 1 bbl to number of platforms and wells spudded.

Oil Spill Number Incident Rate*

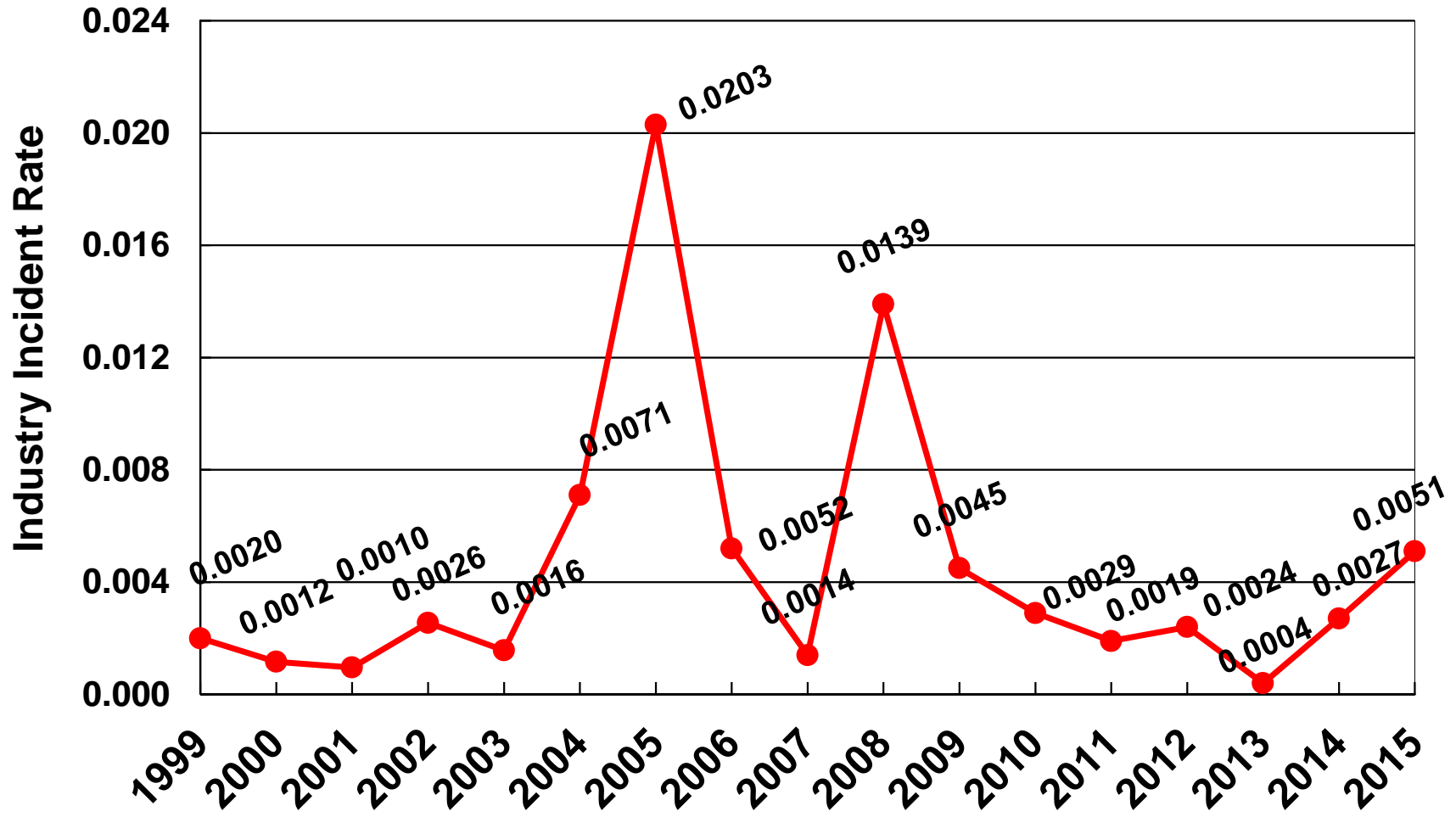
1 < Oil Spills ≤ 10 bbls



*Ratio of number of spills between 1 and 10 bbls to number of platforms and wells spudded.

Oil Spill Number Incident Rate*

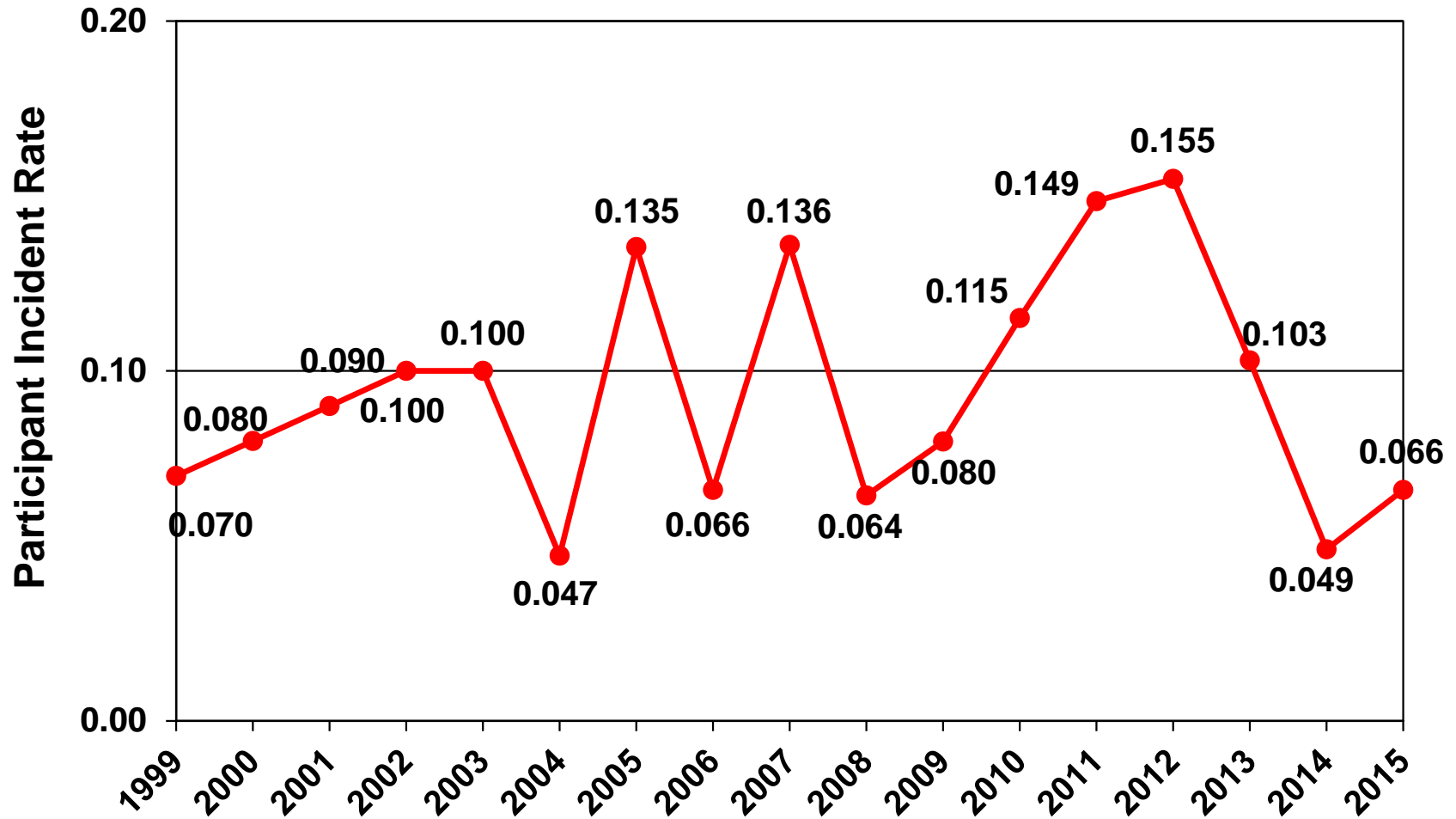
Spills >10 bbls



*Ratio of number of spills greater than 10 bbls to number of platforms and wells spudded.

Oil Spill Volume Incident Rate*

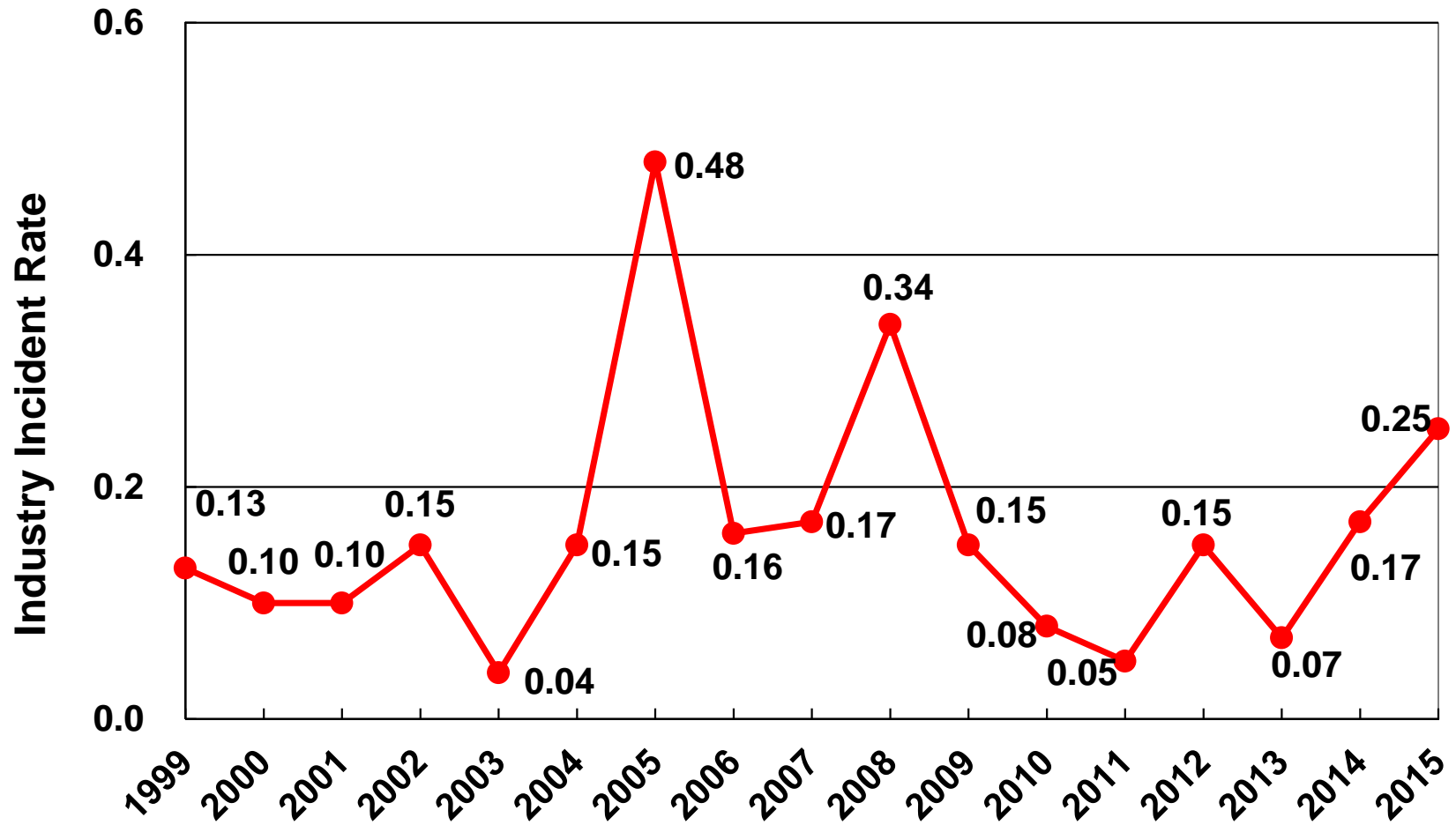
Spills <1 bbl



*Per 1,000,000 bbls of oil produced.

Oil Spill Volume Incident Rate*

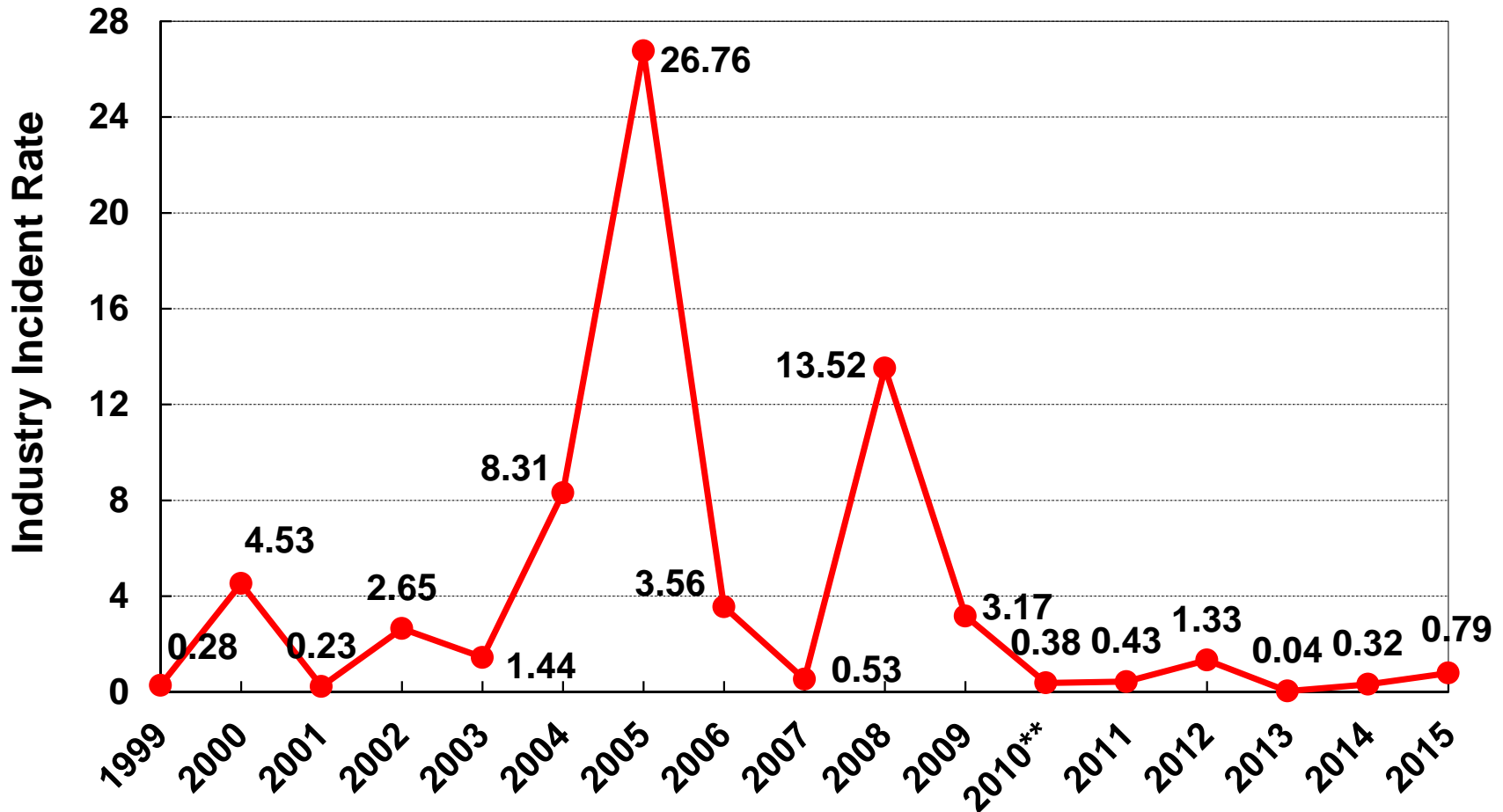
1 < Oil Spills \leq 10 bbls



*Per 1,000,000 bbls of oil produced.

Oil Spill Volume Incident Rate*

Spills >10 bbls

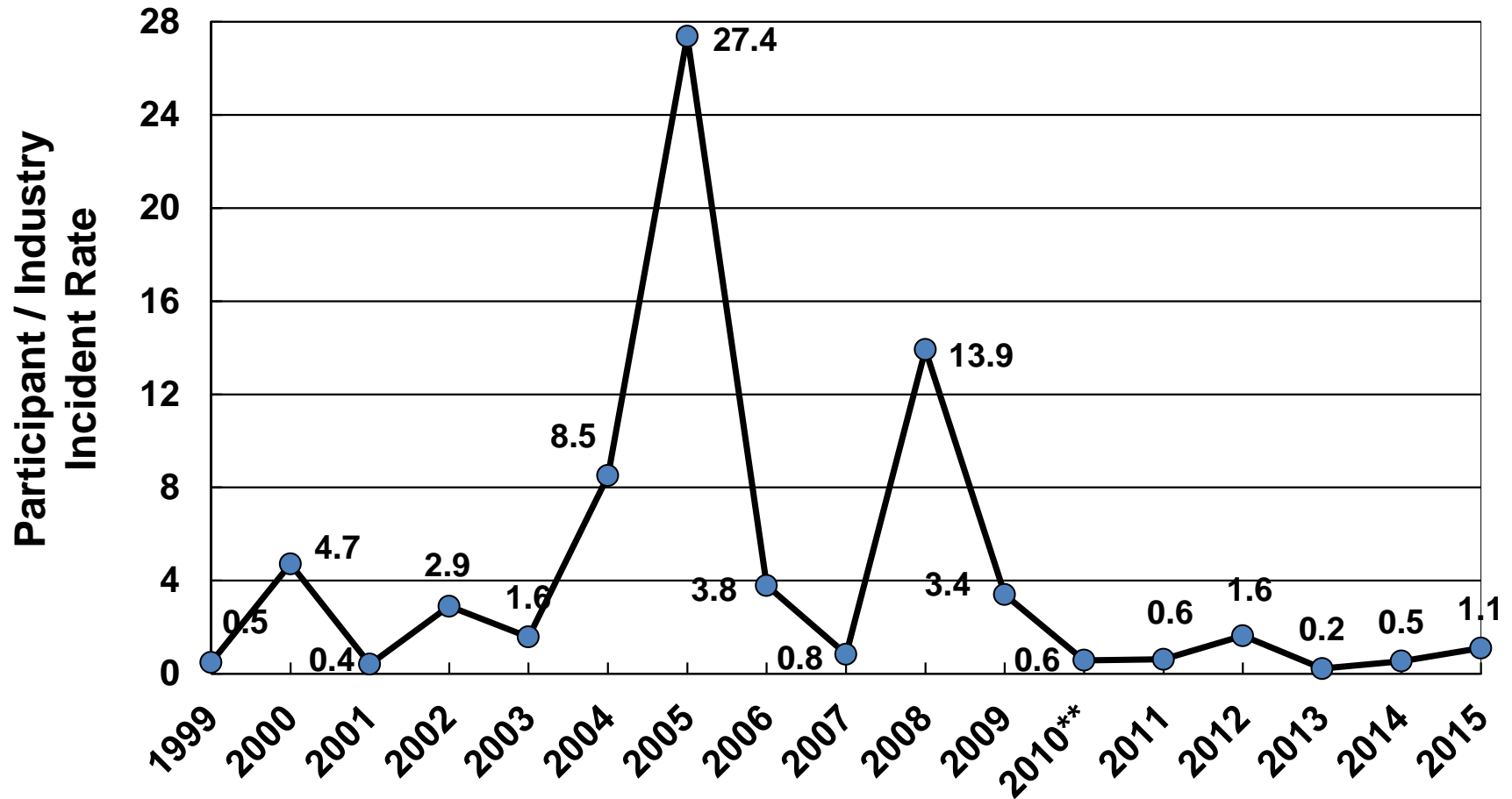


*Per 1,000,000 bbls of oil produced.

**The CY 2010 total volume of oil spilled does not include the volume from the Deepwater Horizon Explosion, which was published by the U.S Coast Guard in an Incident-Specific Preparedness Review as 4,928,100 bbls.

Oil Spill Volume Incident Rate*

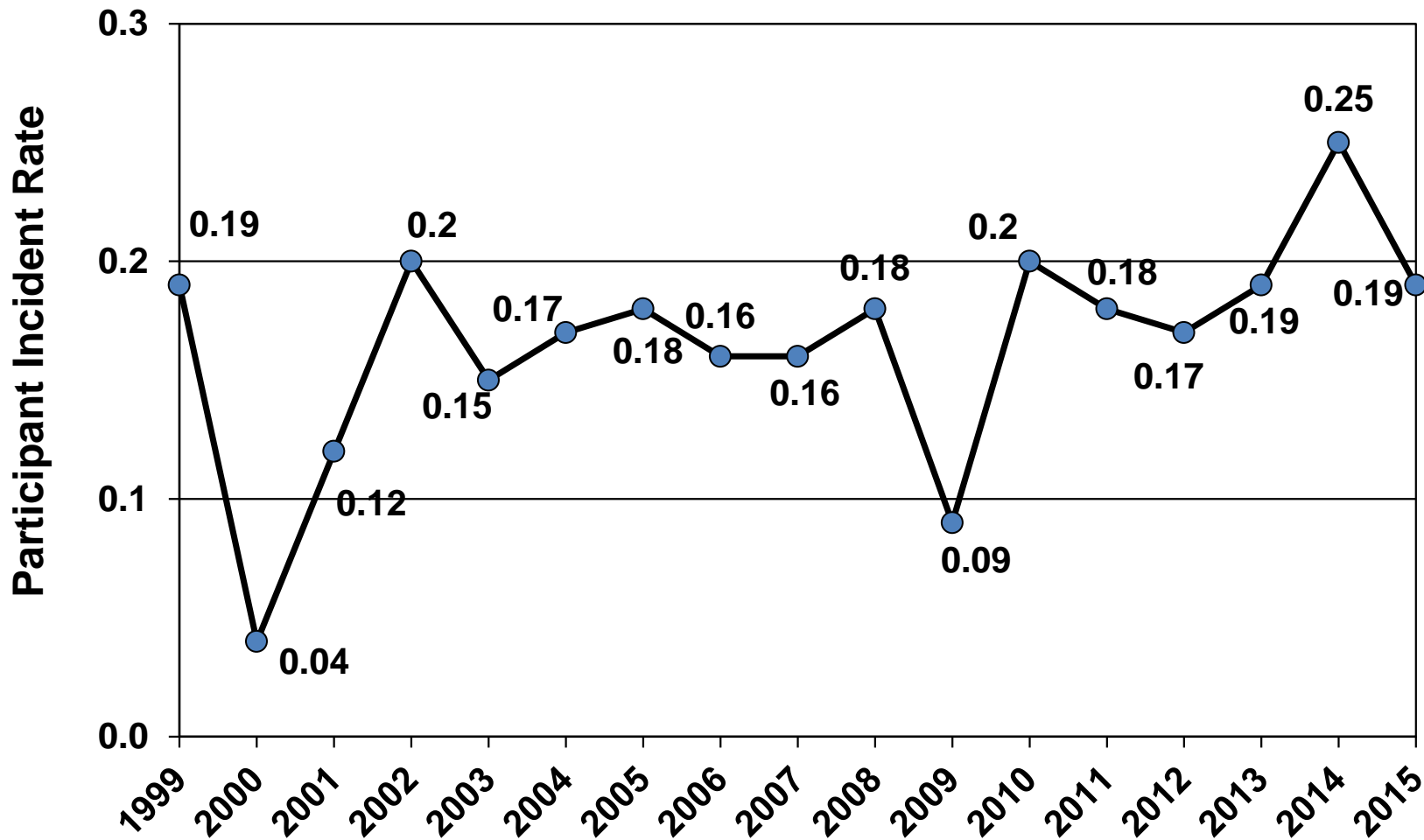
Combined Spills



*Per 1,000,000 bbls of oil produced.

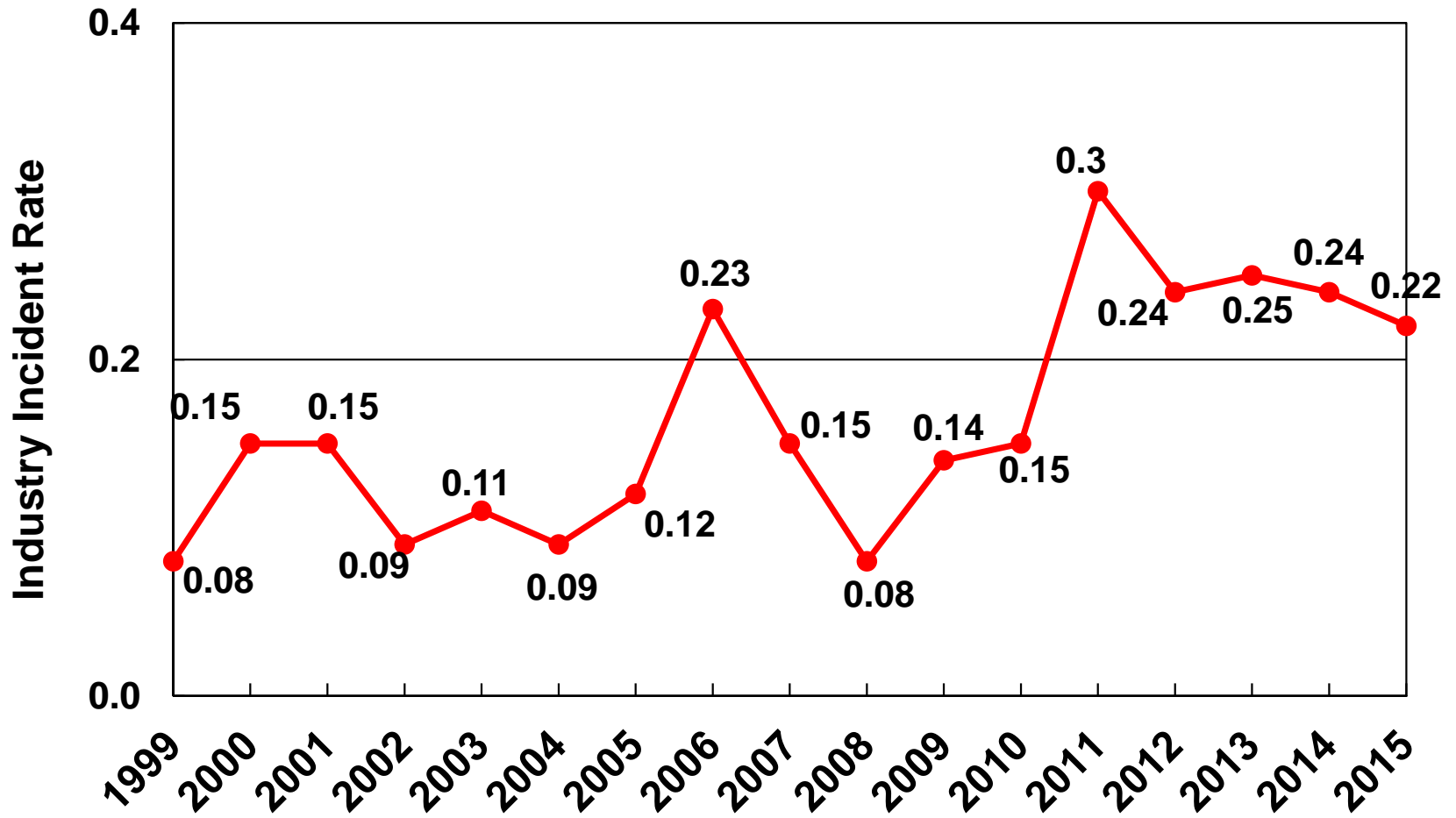
**The CY 2010 total volume of oil spilled does not include the volume from the Deepwater Horizon Explosion, which was published by the U.S Coast Guard in an Incident-Specific Preparedness Review as 4,928,100 bbls.

NPDES Non-compliance Incident Rate*



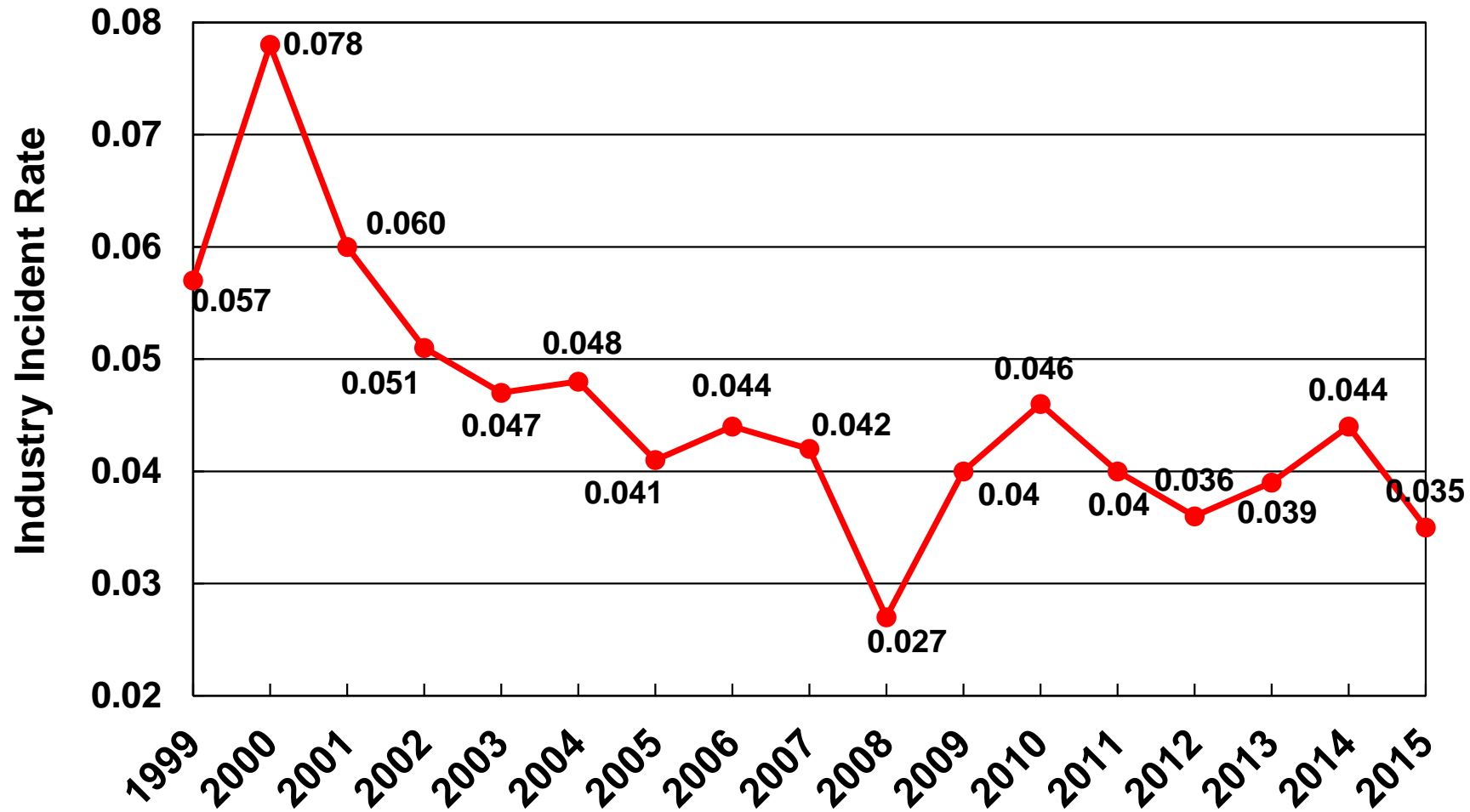
*Ratio of non-compliances to number of platforms and wells spudded.

Drilling/Workover INC Incident Rate*



*Ratio of drilling INCs written to number of rigs inspected.

Production INC Incident Rate*



*Ratio of production INCs written to number of components inspected.

BSEE Website: www.bsee.gov



@BSEEGov



BSEEGov



Bureau of Safety and
Environmental Enforcement



BSEEGov

“To promote safety, protect the environment and conserve resources offshore through vigorous regulatory oversight and enforcement.”