

SAFETY ALERT



Safety Alert No. 399
October 7, 2020

Contact: Jason Mathews
Phone: (504) 731-1496

Grating Failures Cause a Fatality and a Serious Near Miss



Figure 1. Grating Failure on a casing deck that resulted in a fatality.



Figure 2. View from below the Grating Failure that resulted in a fatality.

During a planned maintenance and construction outage on a production platform on May 16, 2020, a contractor working on the casing deck inside of a hard-barricaded area (Figure 1) fell 30-40 feet to the deck below (Figure 2), resulting in death.

On May 4, 2020, in a separate incident on another facility, an electrician fell through the grating area where repair work was being conducted. The electrician was surveying lighting repairs when he stepped on a section of grating that gave way beneath him (Figure 3). He was able to catch himself using his arms to prevent falling through to the plus-10 decking 40 feet below (Figure 4). Other employees in the area were able to assist him to safety.

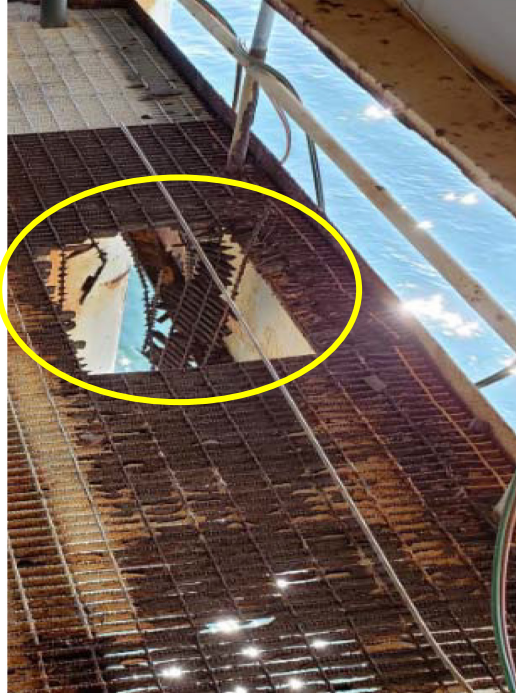


Figure 3. View of grating failure on a facility that resulted in a serious near miss.



Figure 4. View of grating from plus-10 on a facility that resulted in a serious near miss.

Therefore, BSEE recommends that operators and contractors consider the following:

- Review [Safety Alert 353](#) with your workers, discuss hazardous areas and encourage feedback to ensure understanding;
- Inspect your facility to confirm the integrity of decks, grating, and structural and support beams;
- Ensure that any area of marginal or suspect strength is identified, clearly marked, and appropriately barricaded. Take measures to immediately repair, replace or mitigate the identified areas, and inform workers of these zones;
- Ensure all personnel within areas of marginal or suspect strength follow all facility-level fall protection practices in job planning and conducting operations; and,
- Ensure that Job Safety Analysis is conducted and reviewed prior to the start of operation.

--BSEE--

A Safety Alert is a tool used by BSEE to inform the offshore oil and gas industry of the circumstances surrounding a potential safety issue. It also contains recommendations that could assist avoiding potential incidents on the Outer Continental Shelf.