

SAFETY ALERT



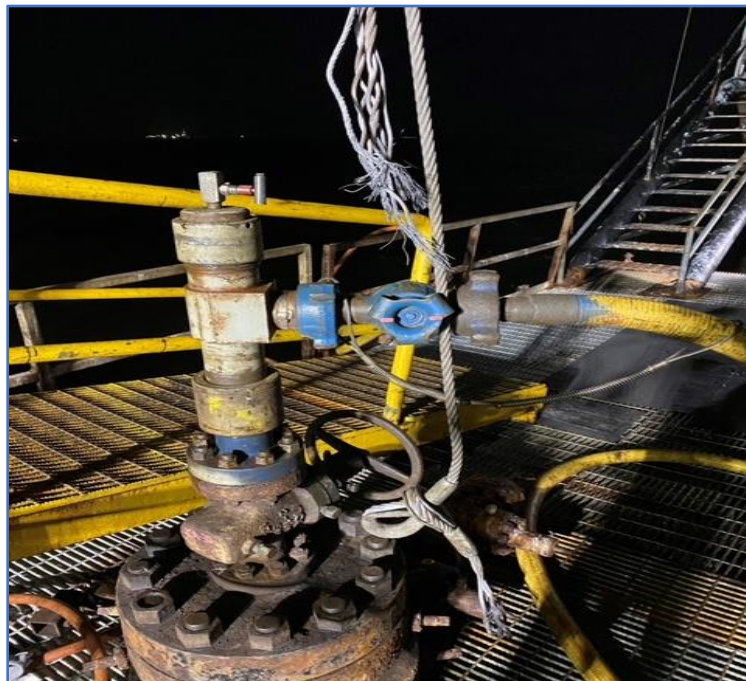
Safety Alert No. 429

February 25, 2022

Contact: bseepublicaffairs@bsee.gov

Phone: (800) 200-4853

Jacking Up Lift Boat During Crane Operations Causes Injury



On 24 April 2021, while a lift boat (L/B) was performing plugging and abandonment work next to a fixed facility, the L/B crane operator notified the contract supervisor that the L/B needed to be raised because of rough seas. After a toolbox talk with all personnel, the crane operator started slacking off a few feet of the L/B crane's load line because it was attached to a wellhead via 4.1-ton dual slings. A well service operator and a helper stayed on the platform to disconnect chain binders securing the gangway to the platform during the lifting operation. The crane operator then informed the first mate that it was okay to change the hydraulic system over to operate the legs of the L/B^[1]. At this time, the crane operator exited the crane cab and went to help the contract supervisor on deck, leaving no one to monitor the crane's load line and slings. The L/B rose approximately two feet when it is suspected the slings caught on the wellhead hanger pins and snapped, striking, and injuring the well service operator.

^[1] According to the Incident report, the L/B's crane has no hydraulic pressure during the lifting/lowering operations, which renders the hydraulic controls systems inoperable, preventing any adjustments to the crane's position or load lines.

Therefore, BSEE recommends that operators consider:

- Disconnecting all platform L/B interface connections during L/B jacking operations, including crane load line(s) and gangways.
- Ensuring the connected rigging hardware is free and clear when the crane's load line is attached to component and before changing elevations.
- Reminding crane operators that they need to remain attentive, in control, and in the crane cab while attached to a load to ensure a safe and successful crane operation.
- Adopting a Standard Operating Procedure for L/B elevation adjustments during operations.
- Developing policy/procedure to require a Job Safety Analysis to be conducted for when a L/B needs to be raised or lowered during well work or construction activities.
- Ensuring all hazards are identified and addressed in JSA before and during the operation, especially L/B and platform/well interconnect and interface hazards.
- Removing the gangway before raising or lowering a L/B.
- Ensuring L/B cranes are operating within crane manufacturer's parameters with all systems functioning properly.

A **Safety Alert** is a tool used by BSEE to inform the offshore oil and gas industry of the circumstances surrounding a potential safety issue. It also contains recommendations that could assist avoiding potential incidents on the Outer Continental Shelf.