
Offshore Information for Area Contingency Planning

Gulf of Mexico

Offshore Worst Case Discharge
Scenarios and Modeling

Alabama, Mississippi, and
Northwest Florida ACP
(Mobile)

Technical Document #2
Appendix 2F

May 2022

Record of Changes

Change Number	Change Description	Section Number	Change Date	Name
1				
2				
3				
4				
5				
6				
7				
8				
9				
10				

Table of Contents

1	Introduction	1
2	Panther Operating Pipeline Discharge	1
2.1	Scenario Description	1
2.2	Potential Oil Contact with the Environment and Resources at Risk.....	2
2.3	Response Planning Information	8
3	Anadarko Drilling King North Well H Blowout	10
3.1	Scenario Description	10
3.2	Potential Oil Contact with the Environment and Resources at Risk.....	11
3.3	Response Planning Information	17

List of Tables

Table 1.	Scenario Key Parameters.	1
Table 2.	Oil Spill Stochastic Results – Predicted Shoreline Impacts.....	3
Table 3.	Mass balance at the end of the worst case deterministic simulation (% of the total volume of oil discharged*).....	6
Table 4.	Scenario Key Parameters.	10
Table 5.	Oil Spill Stochastic Results – Predicted Shoreline Impacts.....	12
Table 6.	Mass balance at the end of the worst case deterministic simulation (% of the total volume of oil discharged*).....	15

List of Figures

Figure 1.	Probability Footprint for Oil on the Water Surface with Average Thickness greater than the Ecological Threshold of 10 μm	2
Figure 2.	Minimum Travel Time for Oil on the Water Surface with Average Thickness greater than the Ecological Threshold of 10 μm	3
Figure 3.	Probability Footprint for Oil on the Shoreline with Average Thickness greater than the Ecological Threshold of 10 μm	4
Figure 4.	Probability Footprint for Total Hydrocarbon Concentration (THC) concentrations in the Water Column greater than the Ecological Threshold of 10 $\mu\text{g/L}$ (~10 ppb).	5
Figure 5.	Mass Balance over Time for worst case deterministic simulation.	6
Figure 6.	Cumulative Maximum Concentration of Dissolved Polycyclic Aromatic Hydrocarbons (PAH) within the water column at any time during the worst case deterministic simulation period.	7
Figure 7.	Cumulative Maximum Concentration of Floating Oil and Total Hydrocarbons on the Shoreline at any time during the worst case deterministic simulation.....	8
Figure 8	Cumulative footprint of exposure to surface floating oil greater than the minimum oil viscosity over a 45-day period for the worst case deterministic simulation.	9
Figure 9.	Probability Footprint for Oil on the Water Surface with Average Thickness greater than the Ecological Threshold of 10 μm	11
Figure 10.	Minimum Travel Time for Oil on the Water Surface with Average Thickness greater than the Ecological Threshold of 10 μm	12

Figure 11. Probability Footprint for Oil on the Shoreline with Average Thickness greater than the Ecological Threshold of 10 μm	13
Figure 12. Probability Footprint for Total Hydrocarbon Concentration (THC) concentrations in the Water Column greater than the Ecological Threshold of 10 $\mu\text{g/L}$ (~10 ppb).	14
Figure 13. Mass Balance over Time for worst case deterministic simulation.	15
Figure 14. Cumulative Maximum Concentration of Dissolved Polycyclic Aromatic Hydrocarbons (PAH) within the water column at any time during the worst case deterministic simulation period.	16
Figure 15. Probability Footprint for Surface Oil exposure greater than 50 μm	17
Figure 16. Minimum Travel Time for Surface Oil exposure greater than 50 μm	18
Figure 17. Cumulative Maximum Concentration of Floating Oil and Total Hydrocarbons on the Shoreline at any time during the worst case deterministic simulation.	19
Figure 18. Cumulative footprint of exposure to surface floating oil greater than the minimum oil viscosity over a 75-day period for the worst case deterministic simulation.	20

1 Introduction

In 2019, the Bureau of Safety and Environmental Enforcement (BSEE) sponsored a project in cooperation with the United States Coast Guard (USCG) to improve the content of the coastal zone area contingency plans (ACPs) with respect to the information necessary to effectively plan for and respond to large oil spills from offshore oil and gas facilities. This collaboration between BSEE, USCG District Eight, resource trustees, state agencies, oil spill removal organizations (OSROs), and Area Committees resulted in a series of technical documents that provide offshore information for the Gulf of Mexico (GOM) on:

- Oil and Gas Infrastructure (GOM Technical Document #1)
- **Worst Case Discharge Scenarios (GOM Technical Document #2 and Appendices 2A-F)**
- Response Concept of Operations (GOM Technical Document #3)
- Response Strategies and BMPs (GOM Technical Document #4)
- Sensitive Species Profiles (GOM Technical Document #5).

These documents were developed specifically for incorporation by reference into the coastal zone ACPs and are hosted on the BSEE Oil Spill Preparedness Division's (OSPD) website.

The WCD scenario information in Technical Document #2 is organized into three main components: Section 2 contains a description of key modeling concepts and reference scales that are useful for understanding the oil spill trajectory data and figures that have been developed for each of the WCD scenarios. Section 3 contains a series of tables that collate and summarize key information regarding all of the WCD scenarios that were developed for the GOM. Appendices 2A – 2F contain specific, more detailed WCD scenario modeling data and trajectory figures for each of the ACP Planning Areas in the GOM. Appendix 2F contains the modeling information for two offshore WCD Scenarios located in the Alabama, Mississippi, and Northwest Florida ACP.

2 Panther Operating Pipeline Discharge

2.1 Scenario Description

The Panther Operating Pipeline Discharge WCD Scenario is a pipeline discharge with the following key parameters.

Table 1. Scenario Key Parameters.

Discharge Depth (m)	Distance from Shore (NM)	Oil Type	Spill Type	Discharge Duration from Well (days)	Discharge Flowrate from Well (bbl/day)	Total Oil Discharged (bbl)
63	43	Med-Light Crude API=34	Pipeline Discharge	1	3,052	3,052

2.2 Potential Oil Contact with the Environment and Resources at Risk

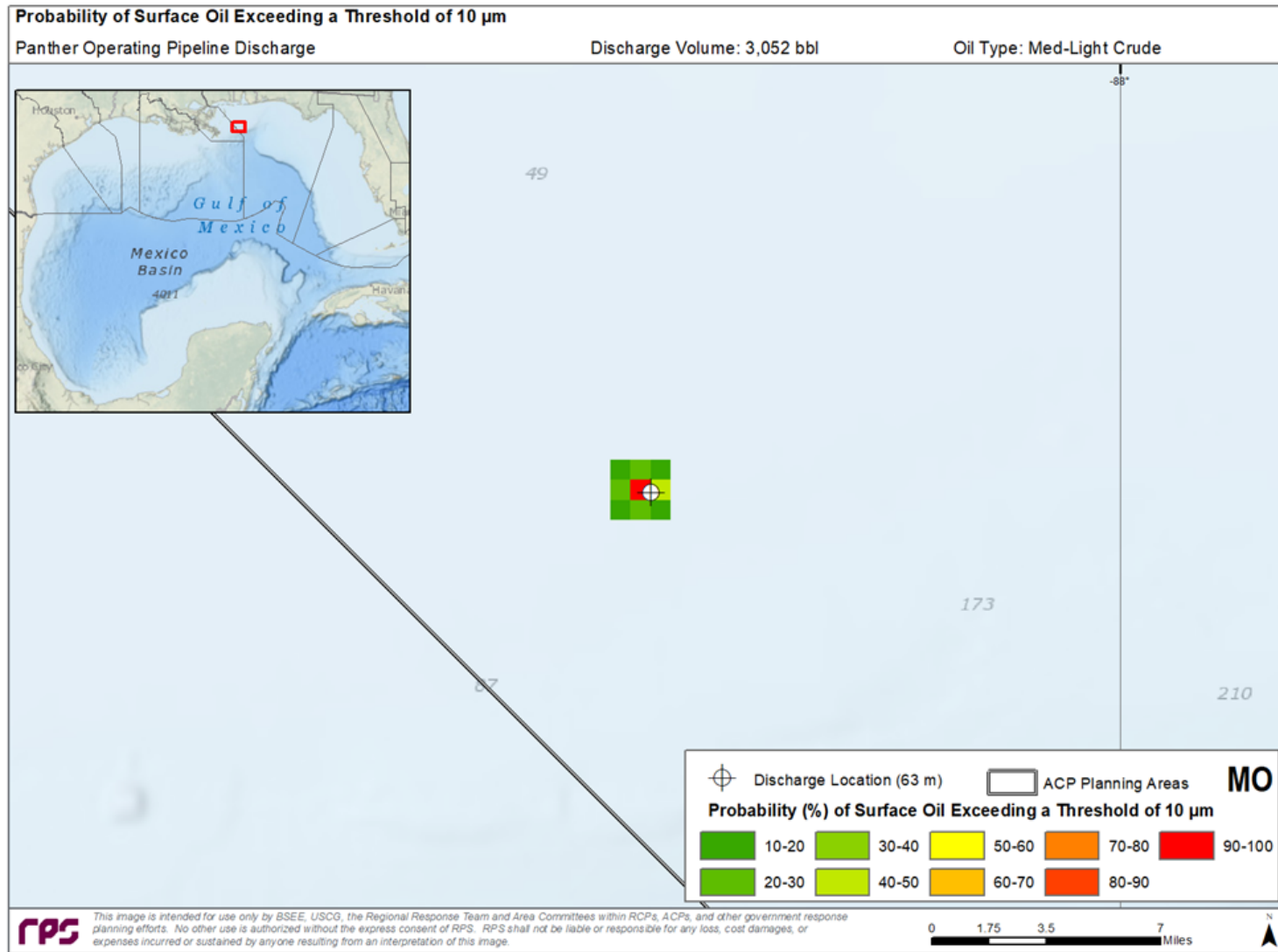


Figure 1. Probability Footprint for Oil on the Water Surface with Average Thickness greater than the Ecological Threshold of 10 μ m.

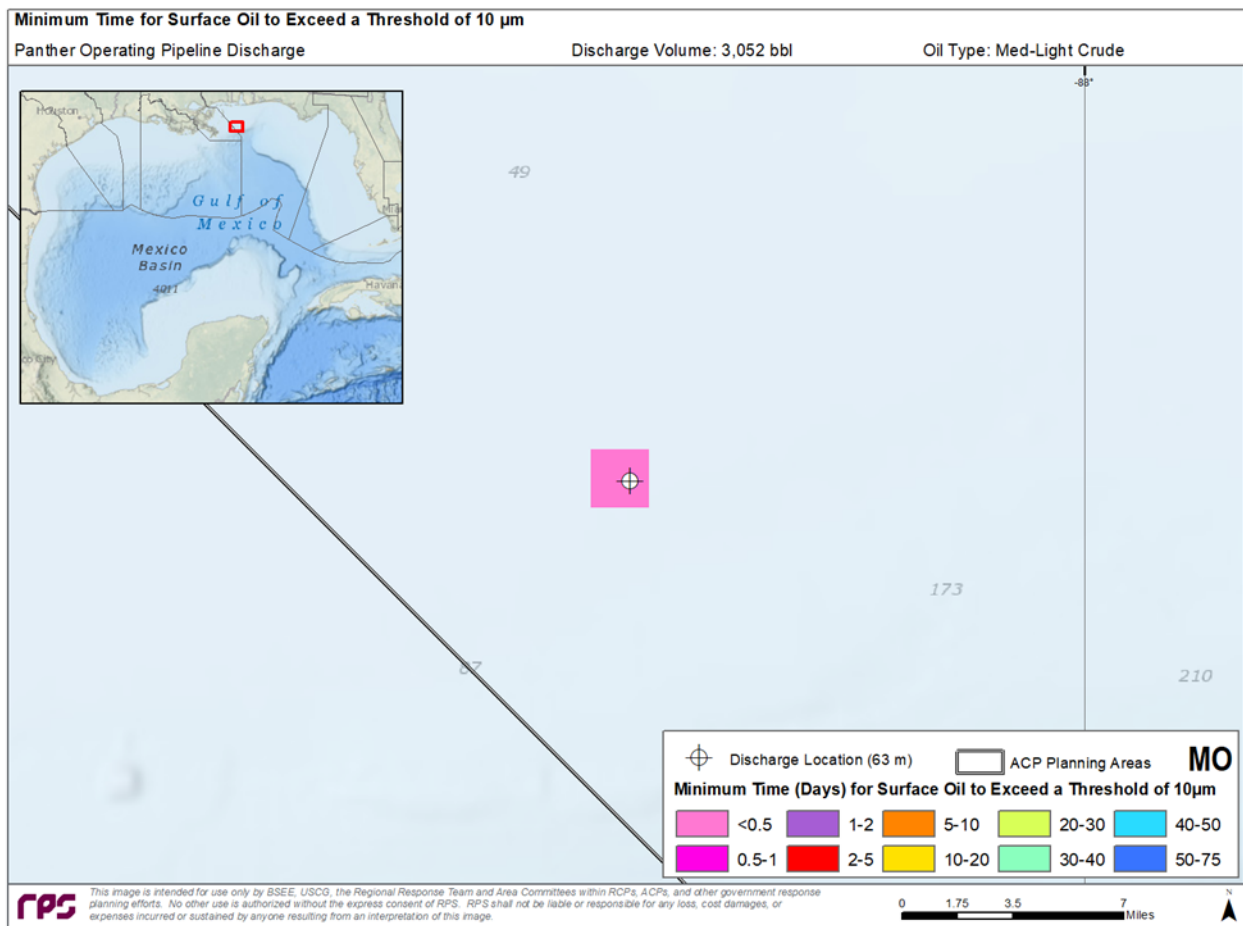


Figure 2. Minimum Travel Time for Oil on the Water Surface with Average Thickness greater than the Ecological Threshold of 10 μ m.

Table 2. Oil Spill Stochastic Results – Predicted Shoreline Impacts.

Percentage of Simulations Reaching shore (%)	Percent volume of discharged oil reaching shore (%)		Time to Reach Shore (days)	
	Maximum	Average	Minimum	Average
97.2	40	16	2	9.6

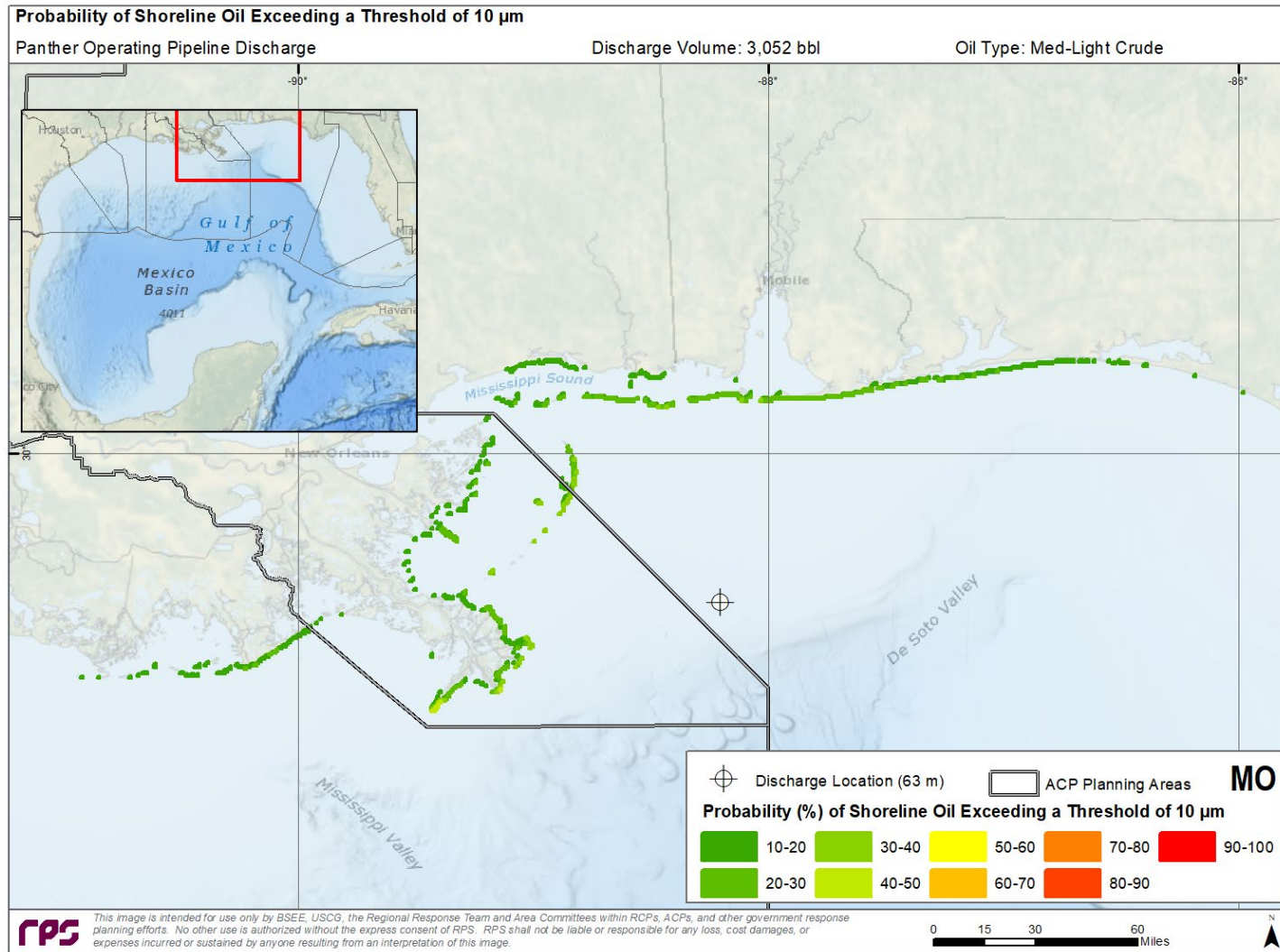


Figure 3. Probability Footprint for Oil on the Shoreline with Average Thickness greater than the Ecological Threshold of 10 μ m.

This thickness of oil may appear on the shore as dark stain or film. 10 μ m is a conservative ecological screening threshold for potential sublethal effects on fauna and birds on the shoreline.

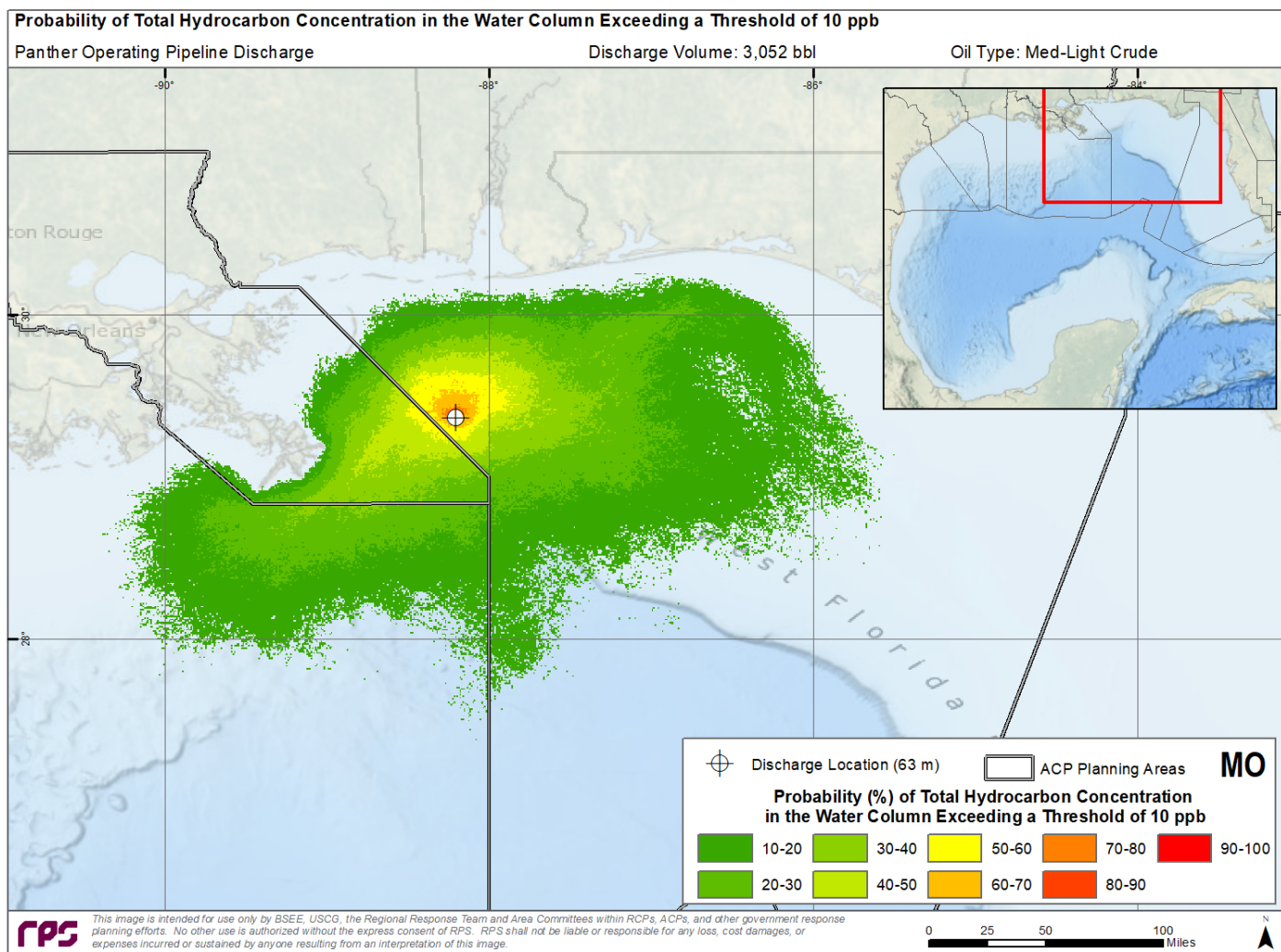


Figure 4. Probability Footprint for Total Hydrocarbon Concentration (THC) concentrations in the Water Column greater than the Ecological Threshold of 10 $\mu\text{g/L}$ (~ 10 ppb). 10 ppb ($\mu\text{g/L}$) of whole oil (THC) corresponds to ~ 0.1 $\mu\text{g/L}$ (~ 1 ppb) of dissolved Polycyclic Aromatic Hydrocarbons (PAHs) for fresh crude oils. This threshold can result in sublethal impacts to early life stages of fish and invertebrates in the upper ~ 20 meters of the water column if exposed to UV light.

The “worst case” deterministic simulation is a single oil trajectory run using the time period and ambient conditions that resulted in the greatest length of shoreline oiling. The simulation resulted in oiling in the following cumulative amounts:

- Oiled Surface Area Exceeding 0.04 μm (Socioeconomic Impact) = 6,776 mi^2
- Oiled Surface Area Exceeding 10 μm (Ecological Impact) = 10 mi^2
- Oiled Shoreline Exceeding 10 μm (Ecological Impact) = 222 mi
- Water Column Oil Exposure Exceeding 10 ppb Dissolved PAH (Ecological Impact) =
- 96 million m^3
- Time to Shore = 29.3 Days

These impact values are calculated considering no response measures are taken to secure the source of the spill or to contain, remove, or disperse oil at the scene.

Table 3. Mass balance at the end of the worst case deterministic simulation (% of the total volume of oil discharged*).

Total Oil Discharged	Surface	Evaporated	Water Column	Sediment	Ashore	Degraded
3,052 bbl	1.5%	43.9%	10.7%	0.1%	17.3%	26.5%

*Important to note these values are not indicative of the maximum amount of oil in each compartment, but instead show the final amount of oil in each compartment.

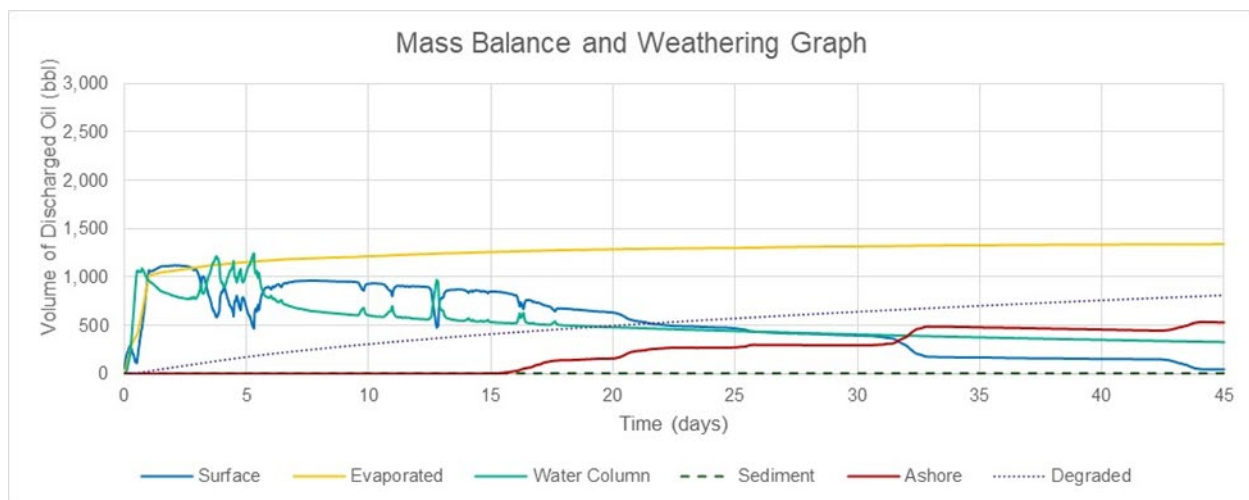


Figure 5. Mass Balance over Time for worst case deterministic simulation.

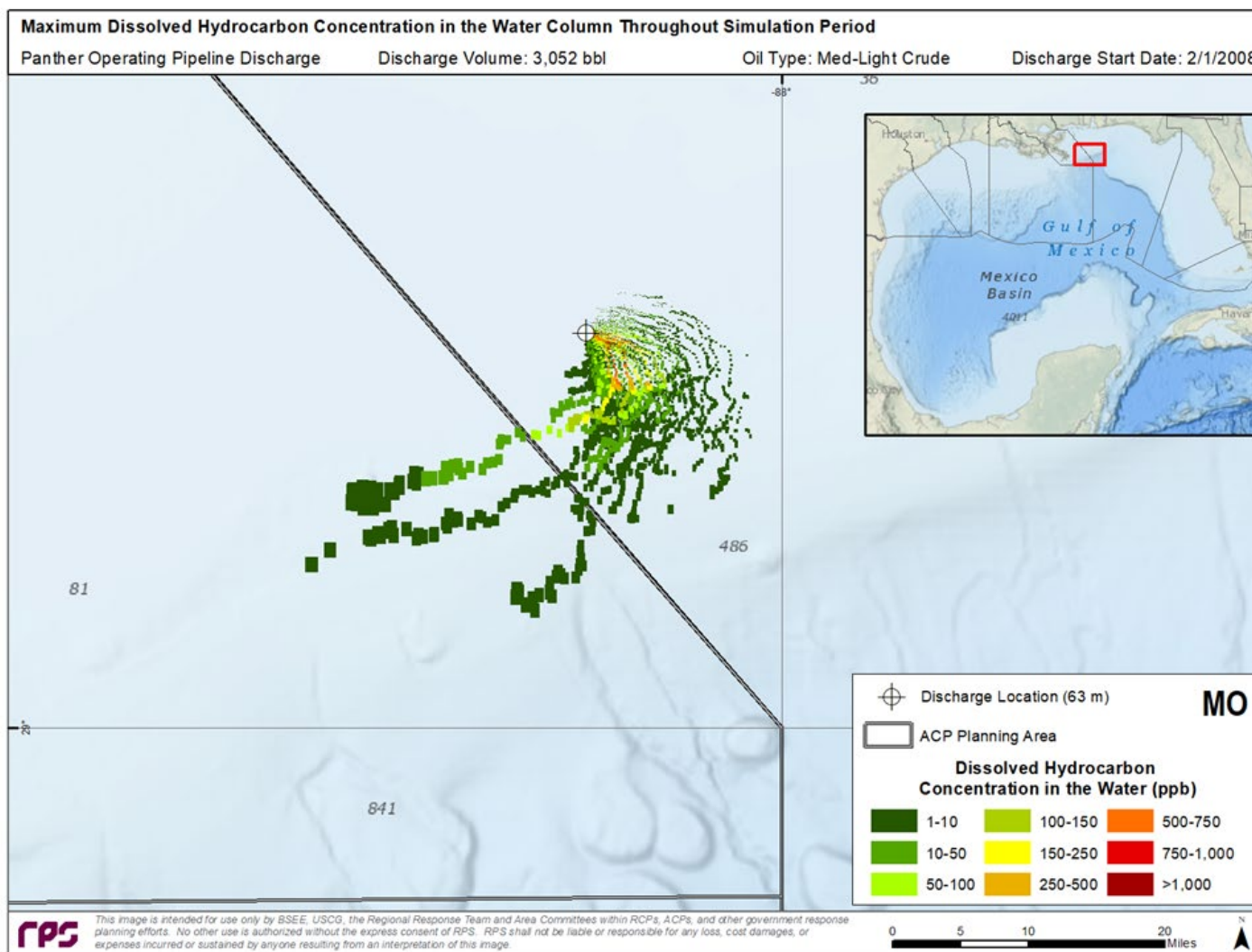


Figure 6. Cumulative Maximum Concentration of Dissolved Polycyclic Aromatic Hydrocarbons (PAH) within the water column at any time during the worst case deterministic simulation period. Dissolved PAH concentrations greater than $\sim 10 \mu\text{g/L}$ ($\sim 10 \text{ ppb}$) could affect plankton in the upper $\sim 20 \text{ m}$ and impart sublethal to lethal effects on other water column biota (adult, juvenile fish, and invertebrates).

2.3 Response Planning Information

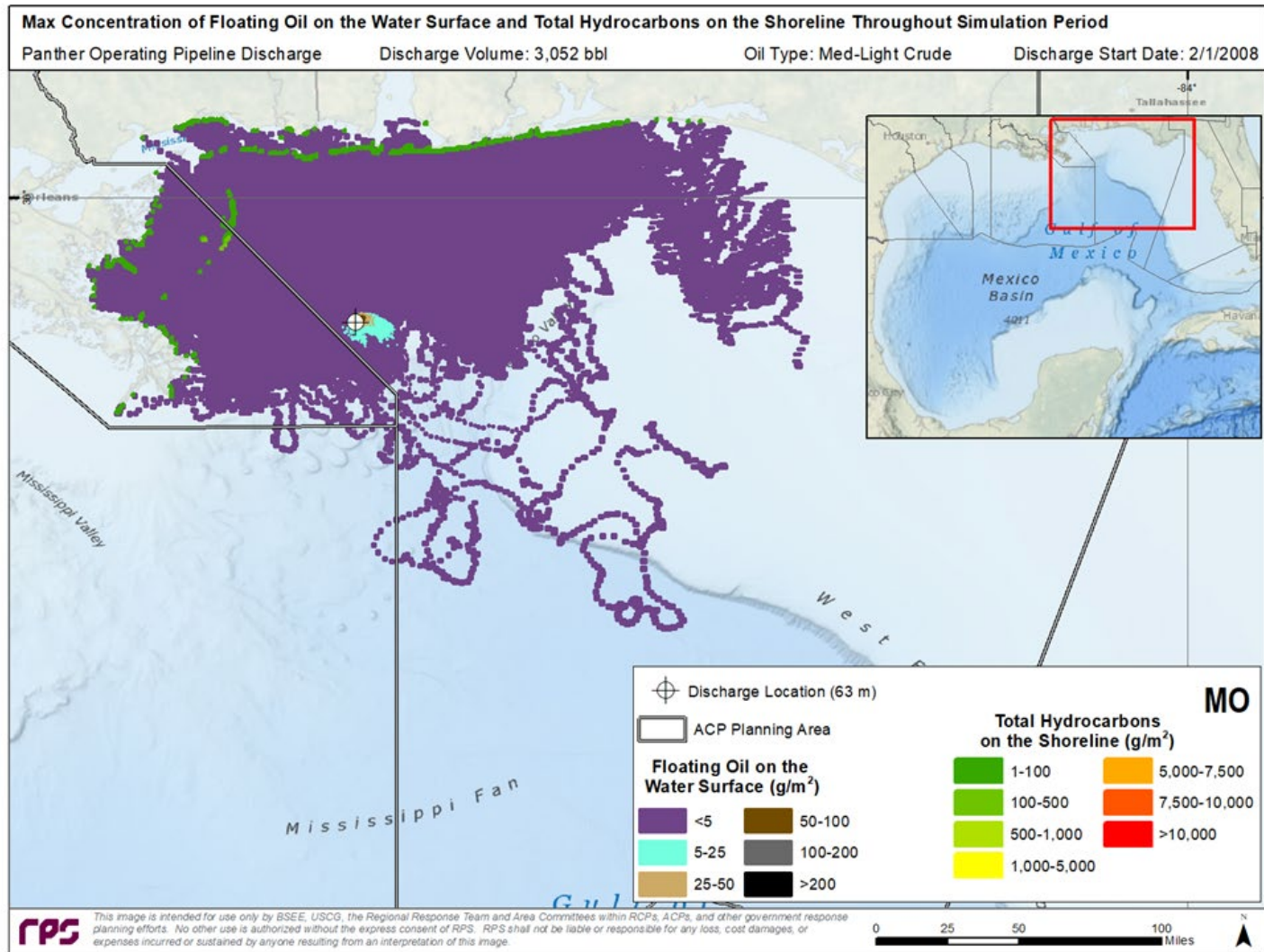


Figure 7. Cumulative Maximum Concentration of Floating Oil and Total Hydrocarbons on the Shoreline at any time during the worst case deterministic simulation.

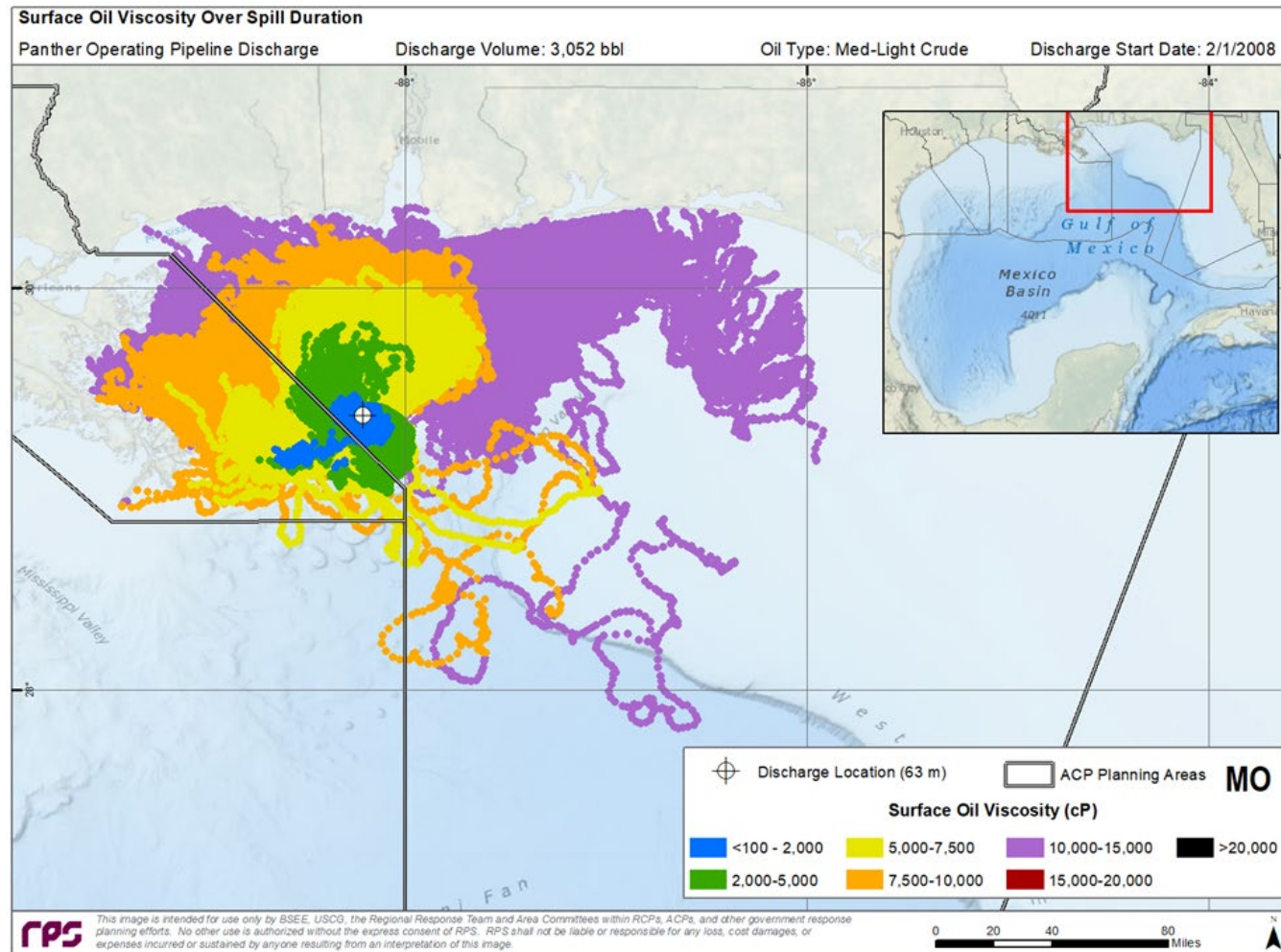


Figure 8 Cumulative footprint of exposure to surface floating oil greater than the minimum oil viscosity over a 45-day period for the worst case deterministic simulation. Viscosities greater than those mapped may be present at any location at any specific time in the simulation. This graphic provides a perspective of how oil viscosity may change as oil is transported away from the discharge site over time, and what areas may be amenable to dispersant operations where enough quantities of oil are present.

3 Anadarko Drilling King North Well H Blowout

3.1 Scenario Description

The Anadarko Drilling King North Well H Blowout WCD Scenario is a subsea well blowout with the following key parameters.

Table 4. Scenario Key Parameters.

Discharge Depth (m)	Distance from Shore (NM)	Oil Type	Spill Type	Discharge Duration (days)	Discharge Flowrate (bbl/day)	Total Oil Discharged (bbl)
1,552	57	Medium Light Crude API = 33	Subsea Well Blowout	30	394,798	11,843,940

3.2 Potential Oil Contact with the Environment and Resources at Risk

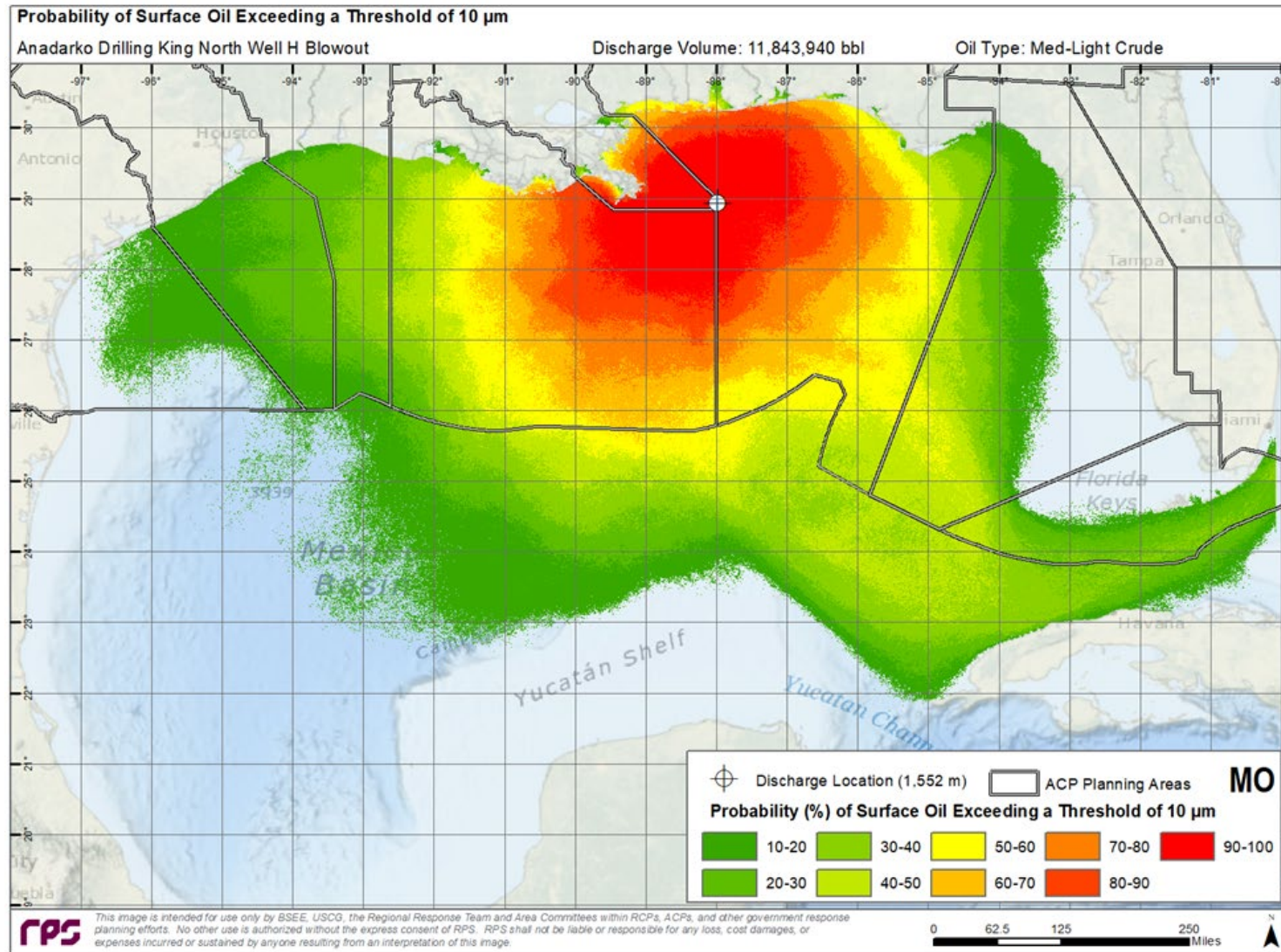


Figure 9. Probability Footprint for Oil on the Water Surface with Average Thickness greater than the Ecological Threshold of 10 μ m.

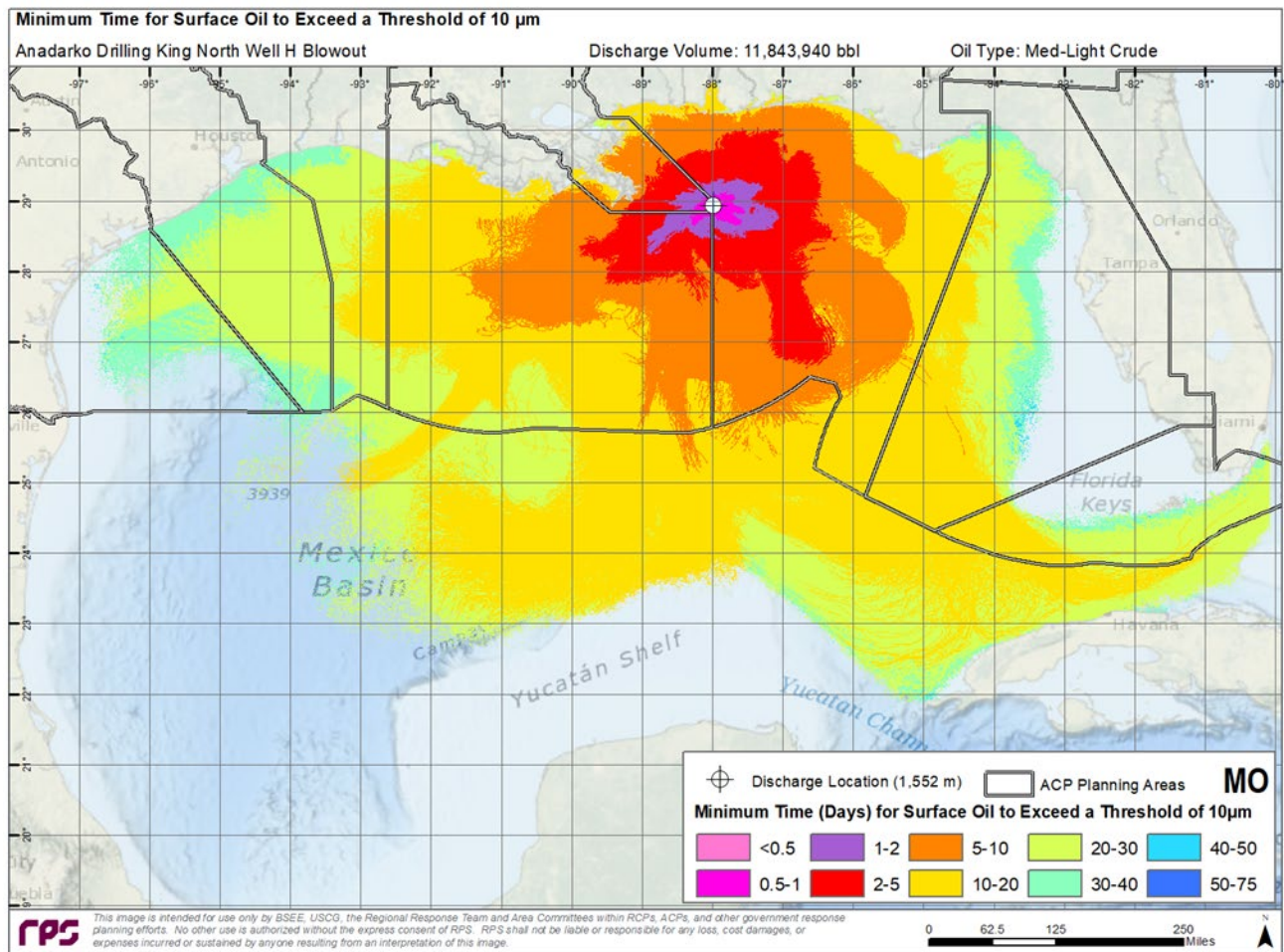


Figure 10. Minimum Travel Time for Oil on the Water Surface with Average Thickness greater than the Ecological Threshold of 10 μ m.

Table 5. Oil Spill Stochastic Results – Predicted Shoreline Impacts.

Percentage of Simulations Reaching shore (%)	Percent volume of discharged oil reaching shore (%)		Time to Reach Shore (days)	
	Maximum	Average	Minimum	Average
99.3	22	8	5.6	16.1

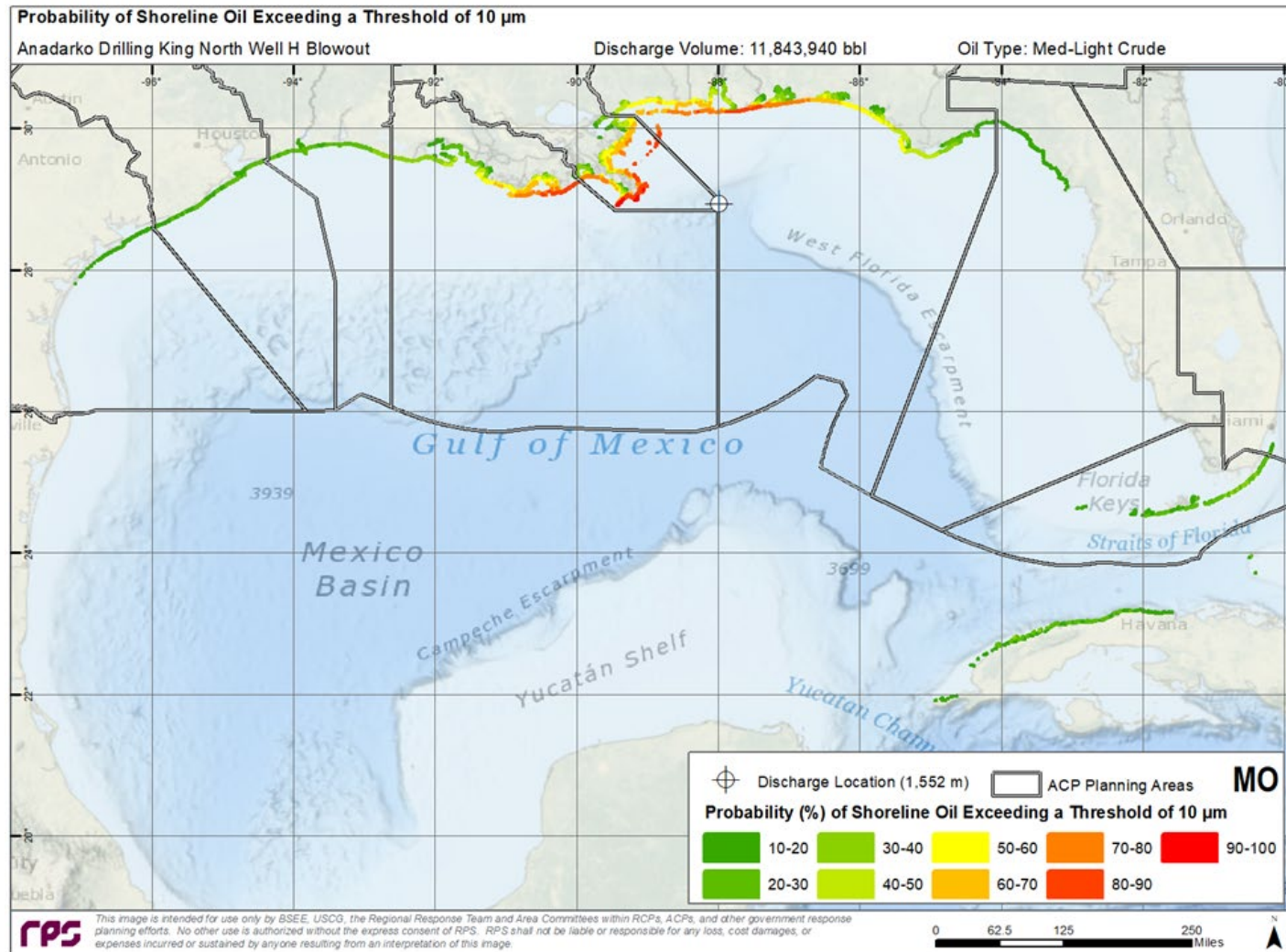


Figure 11. Probability Footprint for Oil on the Shoreline with Average Thickness greater than the Ecological Threshold of 10 μ m. This thickness of oil may appear on the shore as dark stain or film. 10 μ m is a conservative ecological screening threshold for potential sublethal effects on fauna and birds on the shoreline.

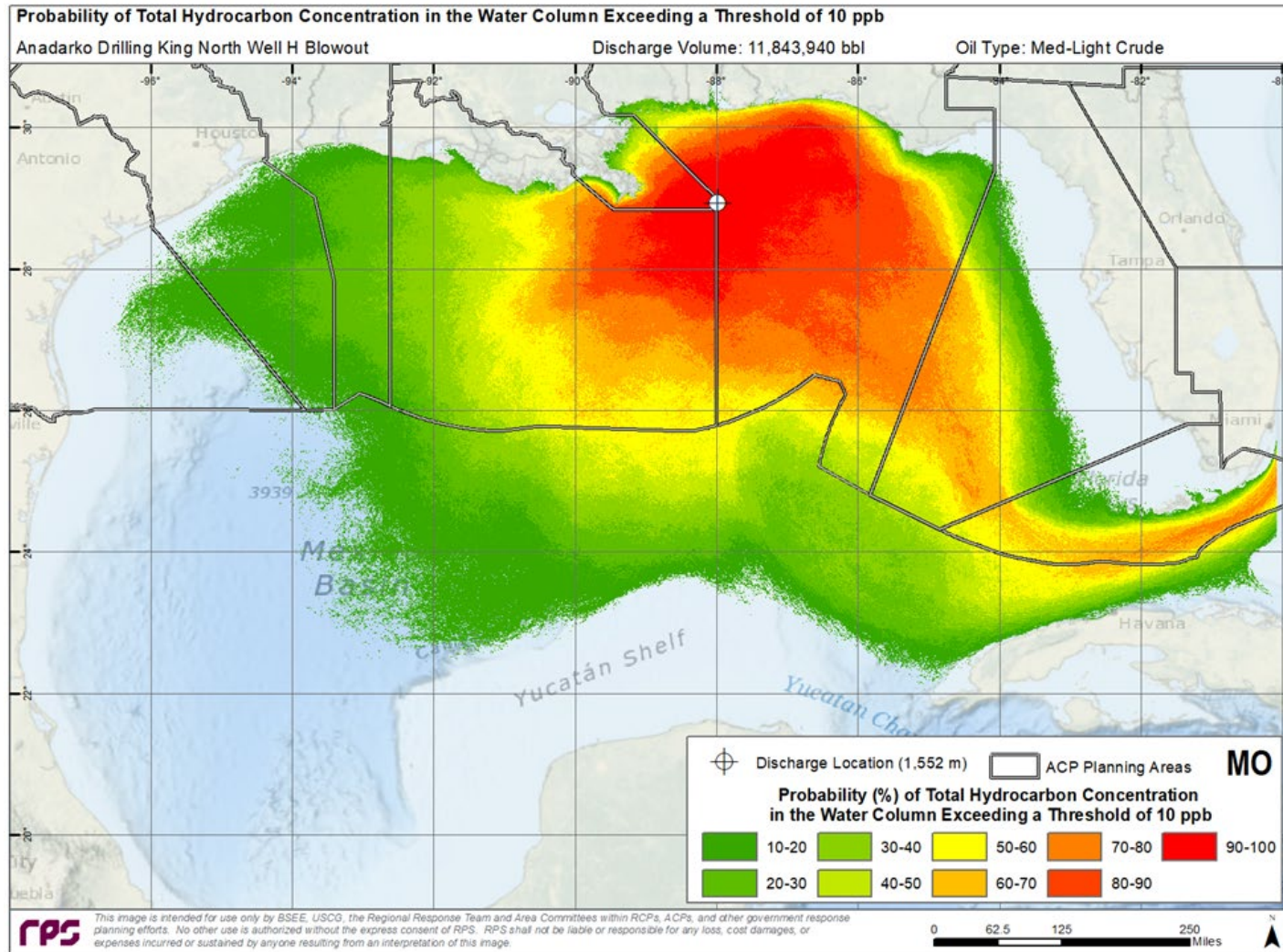


Figure 12. Probability Footprint for Total Hydrocarbon Concentration (THC) concentrations in the Water Column greater than the Ecological Threshold of 10 $\mu\text{g/L}$ (~ 10 ppb). 10 ppb ($\mu\text{g/L}$) of whole oil (THC) corresponds to ~ 0.1 $\mu\text{g/L}$ (~ 1 ppb) of dissolved Polycyclic Aromatic Hydrocarbons (PAHs) for fresh crude oils. This threshold can result in sublethal impacts to early life stages of fish and invertebrates in the upper ~ 20 meters of the water column if exposed to UV light.

The “worst case” deterministic simulation is a single oil trajectory run using the time period and ambient conditions that resulted in the greatest length of shoreline oiling. The simulation resulted in oiling in the following cumulative amounts:

- Oiled Surface Area Exceeding 0.04 μm (Socioeconomic Impact) = 330,117 mi^2
- Oiled Surface Area Exceeding 10 μm (Ecological Impact) = 41,575 mi^2
- Oiled Shoreline Exceeding 10 μm (Ecological Impact) = 2,052 mi
- Water Column Oil Exposure Exceeding 10 ppb Dissolved PAH (Ecological Impact) = 258,175 million m^3
- Time to Shore = 13.4 days

These impact values are calculated considering no response measures are taken to secure the source of the spill or to contain, remove, or disperse oil at the scene.

Table 6. Mass balance at the end of the worst case deterministic simulation (% of the total volume of oil discharged*).

Total Oil Discharged	Surface	Evaporated	Water Column	Sediment	Ashore	Degraded
11,843,940 bbl	2.8%	42.5%	11.0%	1.8%	8.0%	33.9%

*Important to note these values are not indicative of the maximum amount of oil in each compartment, but instead show the final amount of oil in each compartment.

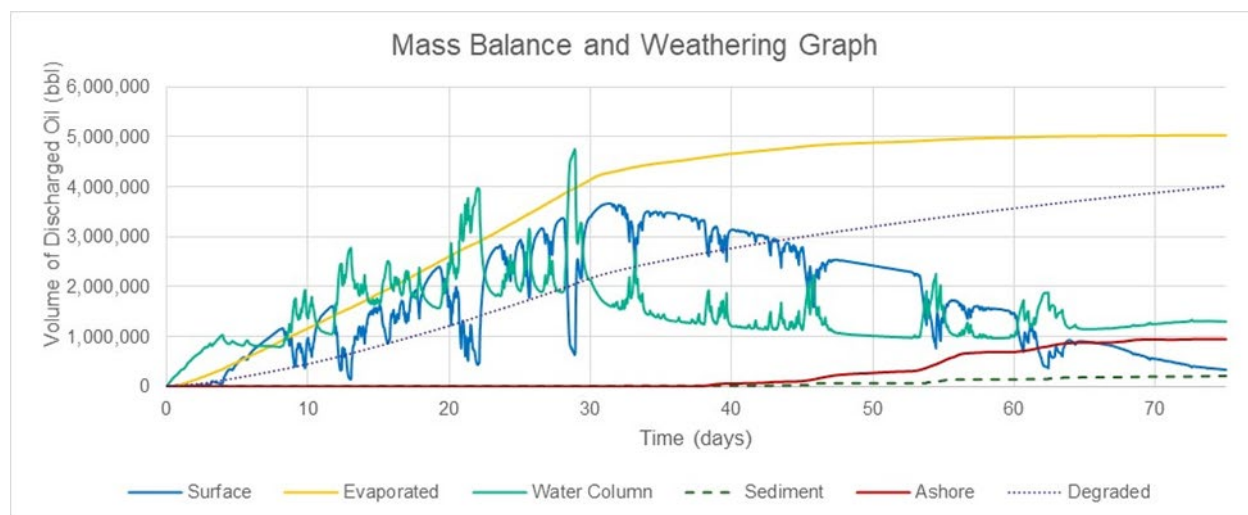


Figure 13. Mass Balance over Time for worst case deterministic simulation.

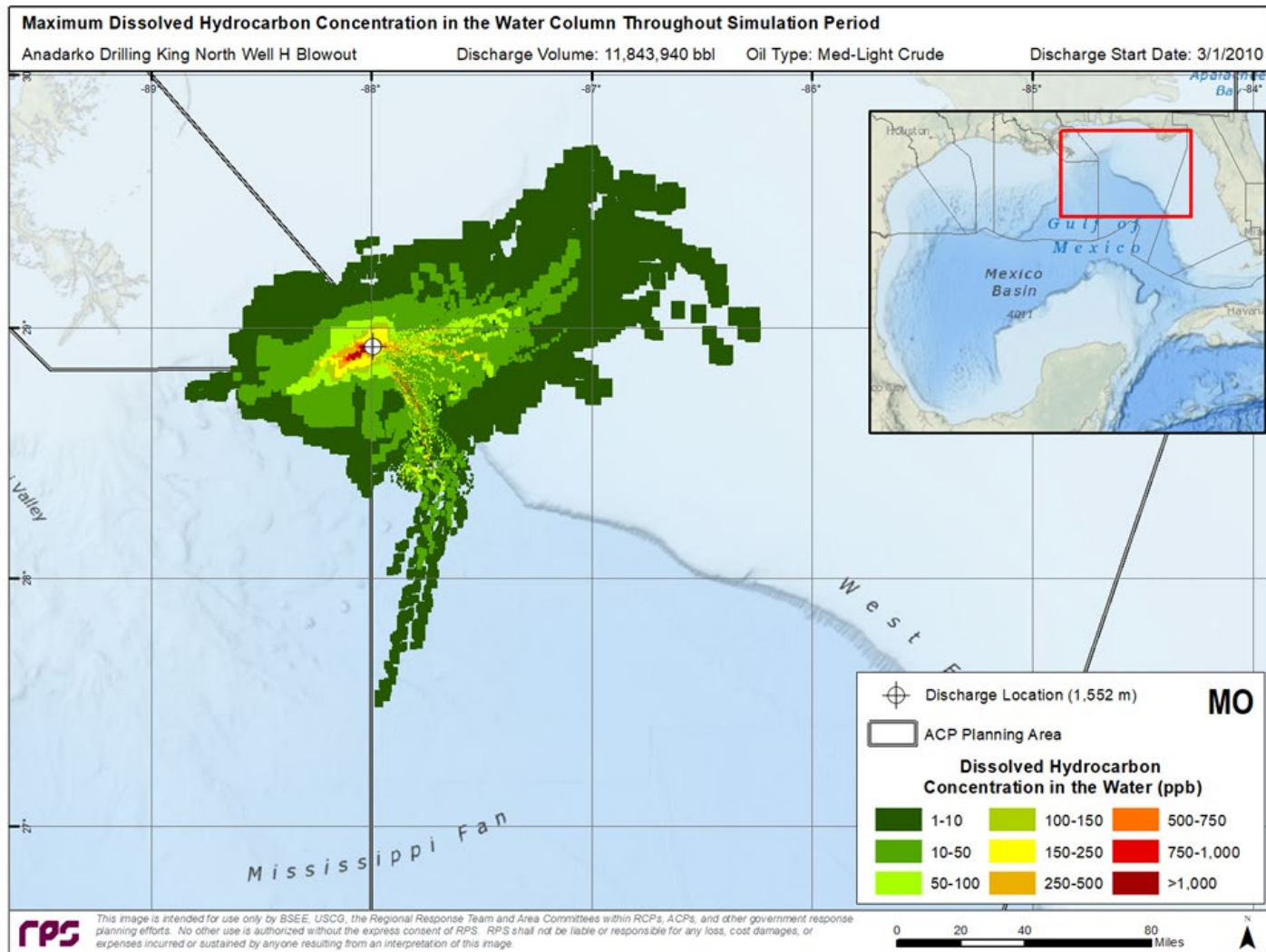


Figure 14. Cumulative Maximum Concentration of Dissolved Polycyclic Aromatic Hydrocarbons (PAH) within the water column at any time during the worst case deterministic simulation period. Dissolved PAH concentrations greater than $\sim 10 \mu\text{g/L}$ ($\sim 10 \text{ ppb}$) could affect plankton in the upper $\sim 20 \text{ m}$ and impart sublethal to lethal effects on other water column biota (adult, juvenile fish, and invertebrates).

3.3 Response Planning Information

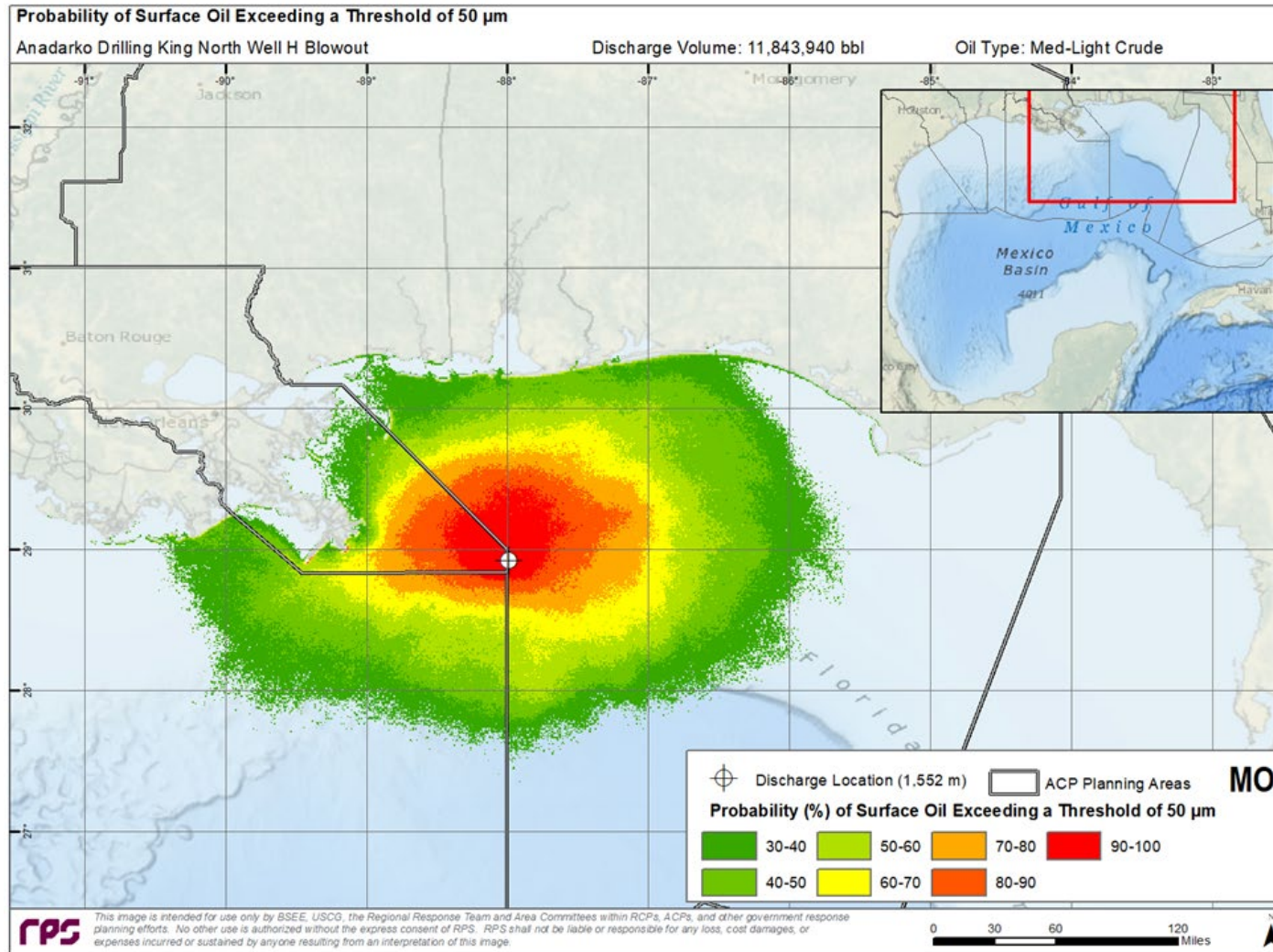


Figure 15. Probability Footprint for Surface Oil exposure greater than 50 μ m. In this thickness range, oil will appear as a continuous to discontinuous patches of dark oil in quantities where high volume on-water mechanical recovery operations will be the most productive.

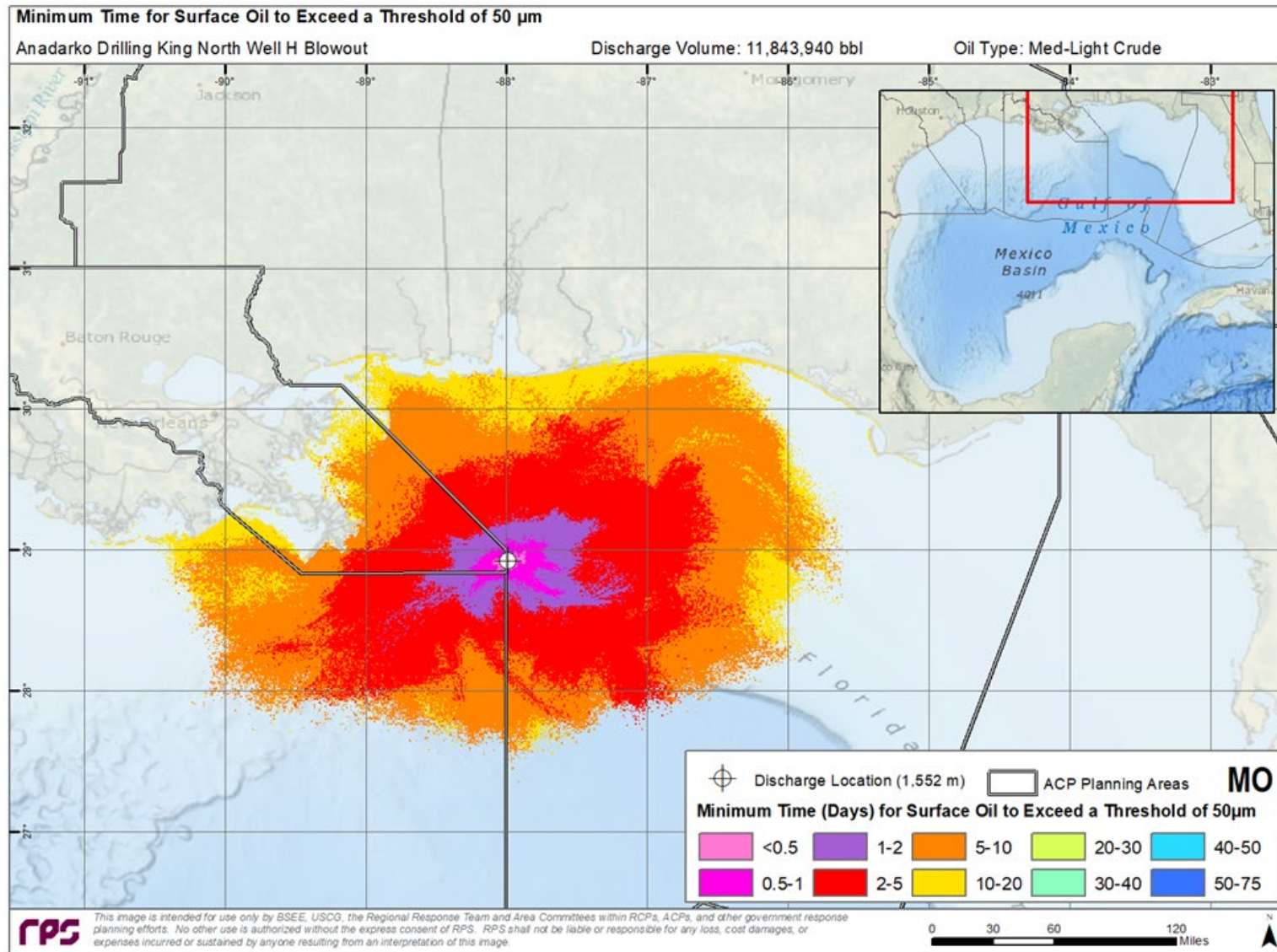


Figure 16. Minimum Travel Time for Surface Oil exposure greater than 50 μ m.

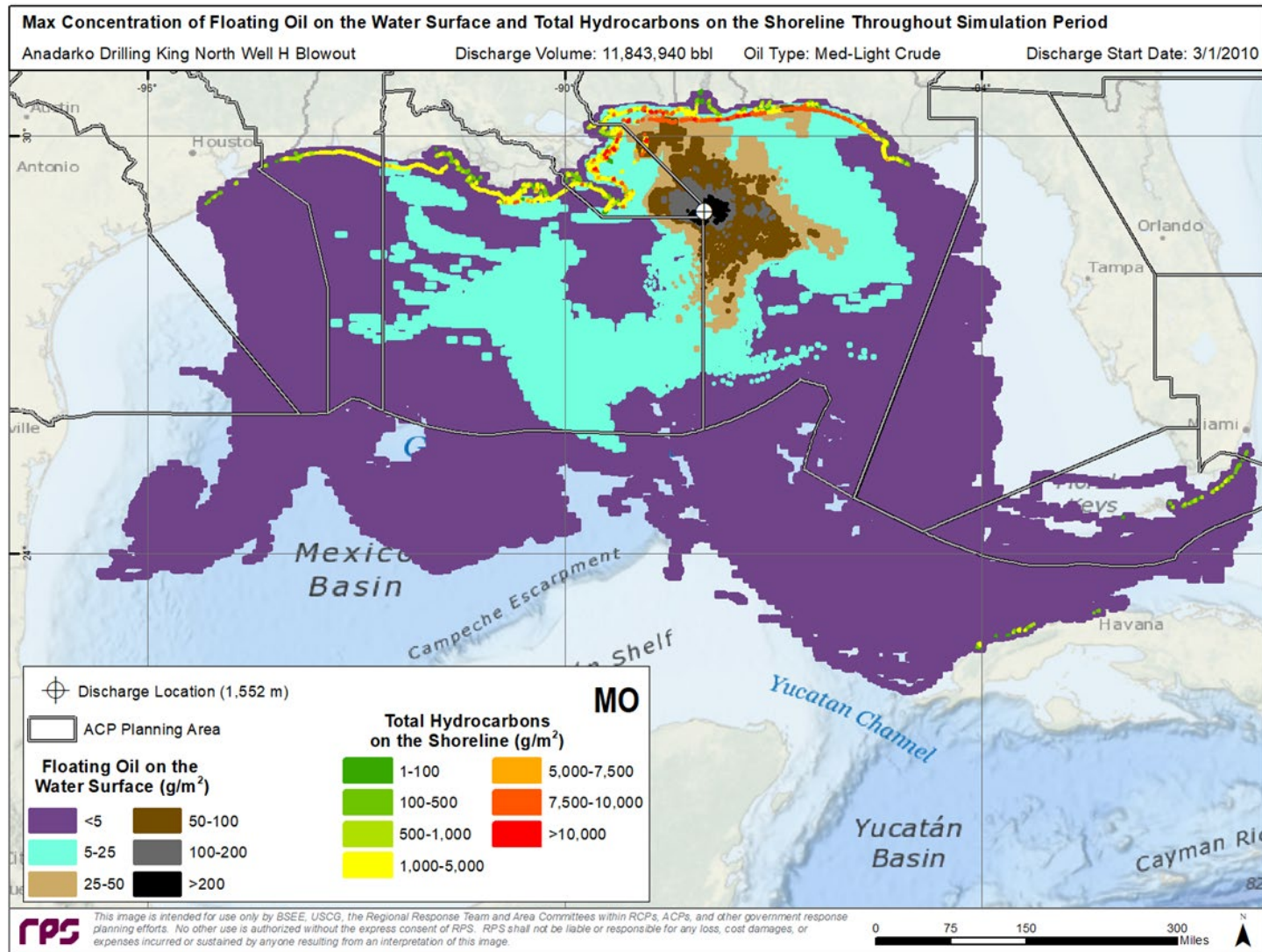


Figure 17. Cumulative Maximum Concentration of Floating Oil and Total Hydrocarbons on the Shoreline at any time during the worst case deterministic simulation.

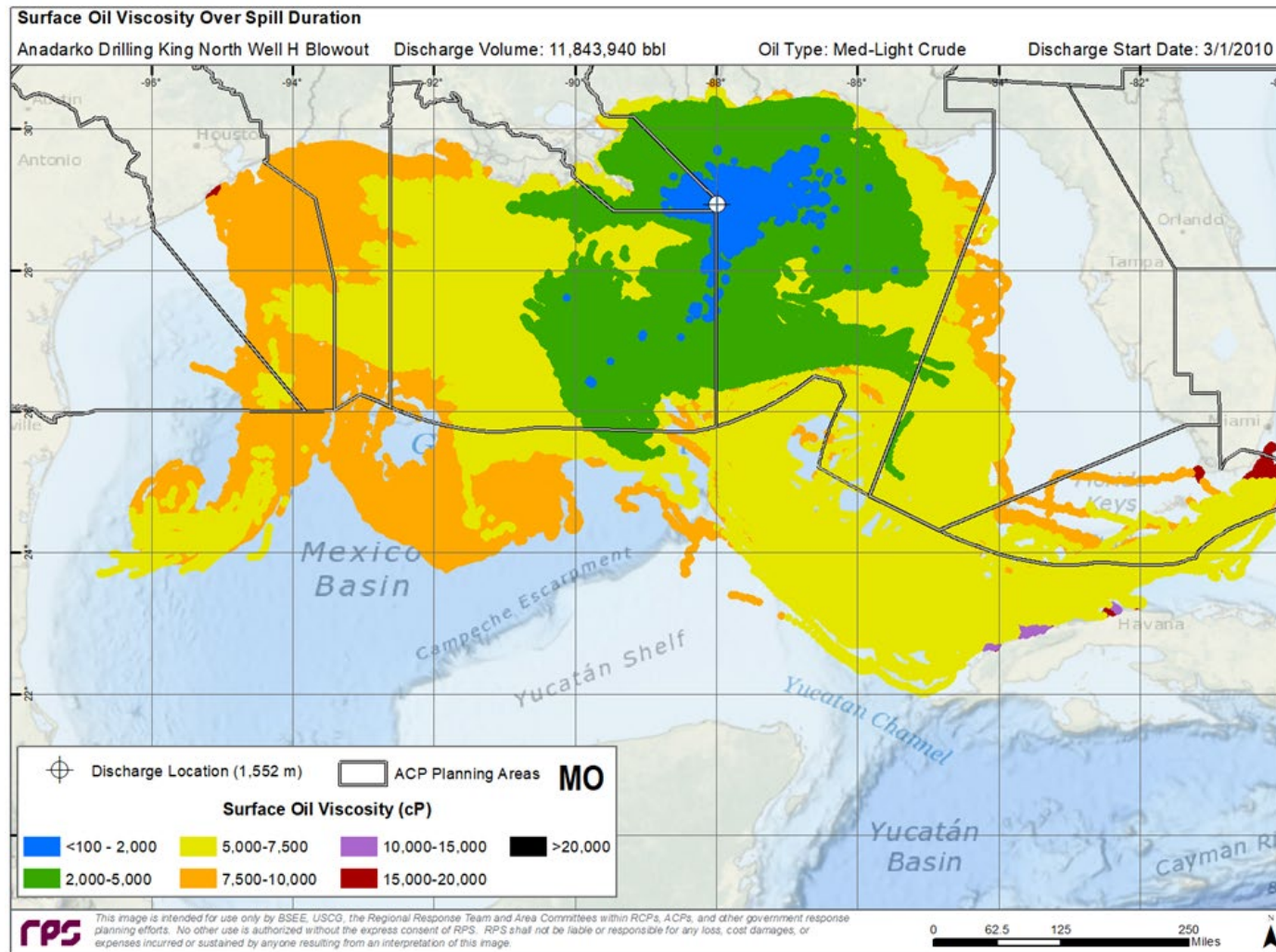


Figure 18. Cumulative footprint of exposure to surface floating oil greater than the minimum oil viscosity over a 75-day period for the worst case deterministic simulation. Viscosities greater than those mapped may be present at any location at any specific time in the simulation. This graphic provides a perspective of how oil viscosity may change as oil is transported away from the discharge site over time and what areas may be amenable to dispersant operations where enough quantities of oil are present.